



ENDOSCOPY SYSTEMS & THERAPEUTIC DEVICES  
**ENDOSOLUTIONS FOR HPB**

FROM  
SCREENING TO  
TREATMENT

**FUJIFILM**  
Value from Innovation



Click on a topic to jump to that chapter.

## **COMPANY**

Unchanging Values	4
Developing Technologies	6
Experiencing Endoscopy	8
HPB in Practice	10

## **PRODUCTS & MEDICAL DEVICES**

Endoscopes	13
Light Sources & Processors	25
ERCP	29
Papillectomy	53
Accessories	57
Monitors & Carts	67

## **SERVICE**

Service & Partnership	71
Training & Education	74





# DEDICATED TO **PATIENTS' QUALITY OF LIFE**



## **THE UNCHANGING VALUES OF THE FUJIFILM GROUP**

We will use leading-edge, proprietary technologies to provide top-quality products and services that contribute to the advancement of culture, science, technology and industry, as well as improved health and environmental protection in society.

Our overarching aim is to improve the quality of life of patients worldwide through early detection and successful treatment of disease.

## HEALTHCARE

**As a total healthcare company, we are involved in the development of a wide range of businesses in the three areas of prevention, diagnosis, and treatment. We are contributing to the health of people around the world by responding to unmet medical needs, early detection of diseases, and support for the development and manufacture of innovative vaccines and pharmaceuticals.**

Our clinically proven products and technologies are continuously being refined to make the work of health professionals more effective and efficient.

At Fujifilm we are constantly innovating and creating new solutions that address the practical needs of our global customers in various business fields including healthcare, graphics systems, optical devices, recording media and photographic technologies.

Every year we invest around seven percent of our consolidated turnover in research and development which includes dedicated research and the nurturing of close working relationships with international specialists. This ensures that we not only meet high-quality requirements but also contribute to the advancement of culture, science, industry, and technology as well as improved health and environmental protection in society.

The focus at Fujifilm is firmly on holistic patient care which means that our service portfolio includes expert technical assistance, a comprehensive range of hygiene products and individual consulting.

We have expanded our business globally, in order to support patients and medical service providers with rapid, precise diagnosis and efficient treatment.

Today, Fujifilm operates in around 50 group companies and branches in Europe, employing over 4,500 people engaged in R&D, manufacturing, sales, and service support.



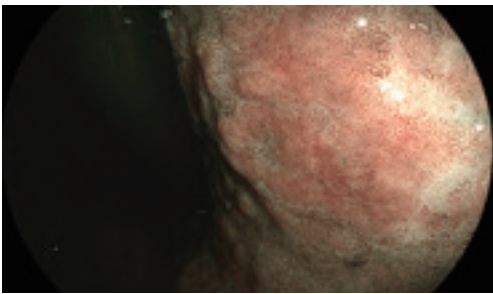


# DEVELOPING TECHNOLOGIES BEYOND THE EXPECTED



## ADVANCED TECHNOLOGIES, EXCELLENT POSSIBILITIES

Fujifilm has been developing image processing technologies for many years. Excellent image capture and advanced data processing further improve technology in our endoscopy portfolio.



The Multi Light™ technology, for example, uses distinct light wavelengths to support lesion detection and characterisation by high-contrasting LCI and BLI images.



Fujifilm continues to develop imaging solutions: One particular focus has been the development of AI-driven smart technologies for the radiology field as well as medical ultrasound and, more recently, endoscopy: CAD EYE.

CAD EYE is intended to make procedures more efficient by improving polyp detection and characterisation rates.



## SELECTION OF OUR TECHNOLOGIES



### MULTI LIGHT™ TECHNOLOGY

Illumination suitable for observation using variable LED light intensity.



### ADVANCED FORCE TRANSMISSION

is expected to improve manoeuvrability, especially in more challenging anatomies.



### LCI TECHNOLOGY

Increased contrast in red colour leads to improved visibility of abnormalities, inflammation and delineation.



### DICOM TECHNOLOGY

The goal of the DICOM Standard is to achieve compatibility and improve workflow efficiency between imaging systems and other information systems.



### BLI TECHNOLOGY

The combination of special light wavelengths results in improved contrast imaging for characterisation.



### ANTI-BLUR FUNCTION

The clearest image among multiple images is automatically selected.



### FICE TECHNOLOGY

Provides the possibility to enhance slight colour differences such as vascular and mucosal patterns without tissue staining. The procedure digitally selects three wavelengths of light and displays reconstructed images.



### HD TECHNOLOGY

Combine equipment displaying this logo to ensure that you view HDTV images on your monitor.



### SUPER CCD TECHNOLOGY

The Super CCD and high-performance optical system provides high-quality images.





# EXPERIENCING ENDOSCOPY FROM SCREENING TO TREATMENT



## RELIABLE GUIDANCE, IMPROVED OUTCOMES

As one of the leading companies in the development of endoscopy technology, Fujifilm is always striving to provide high quality products, excellent services and highly customised business solutions in the world of endoscopy.

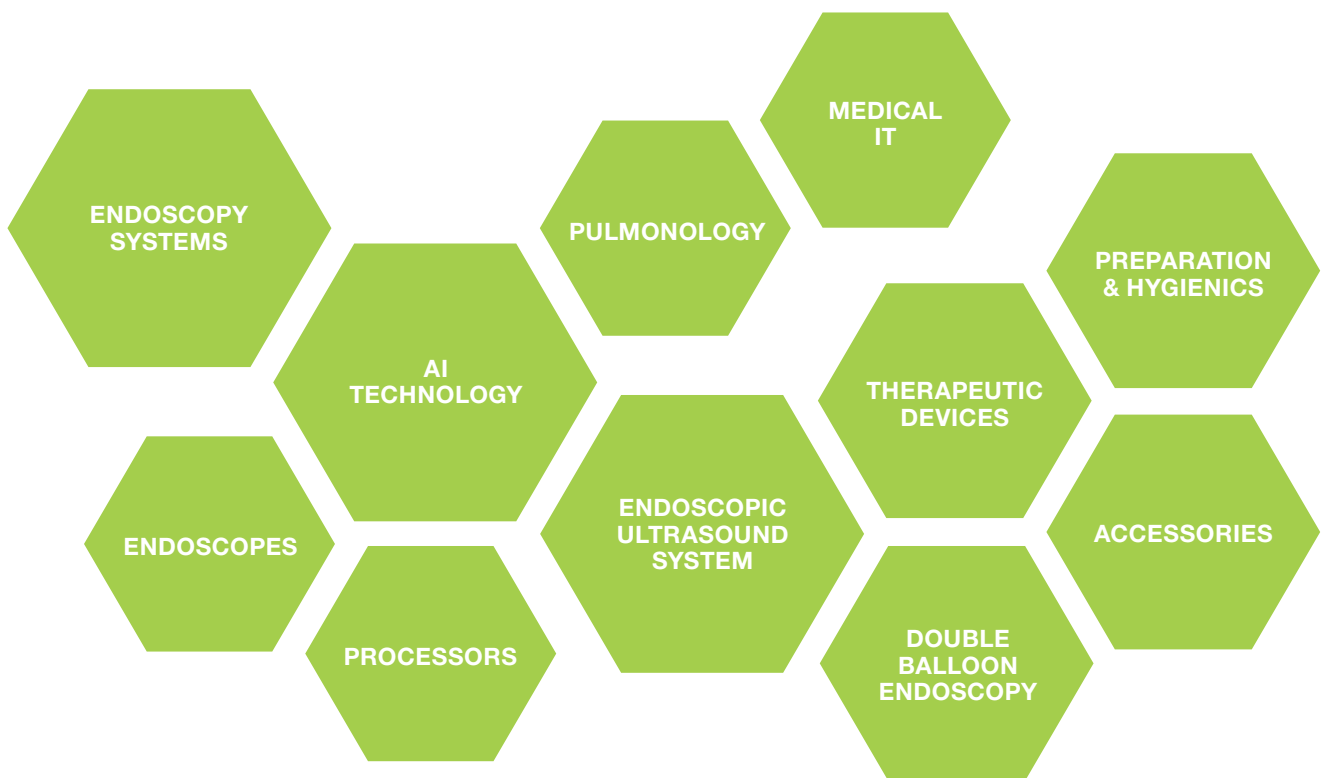
We regularly set new benchmarks, for example, with the introduction of the LED Multi Light™ technology providing the observation modes LCI and BLI, with devices for double balloon endoscopy as well as the effective Flamingo device to meet the therapeutic challenges of the buried bumper-syndrome.

## PRODUCT PORTFOLIO

**For diagnostic and interventional endoscopy Fujifilm is pushing the boundaries of endoscopic imaging technologies, AI empowered.**

We have built a portfolio of solutions which are able to support the healthcare system to focus on the patient's needs.

Fujifilm offers a wide range of endoscopic and therapeutic technologies from endoscopy systems to devices and services, providing endoscopy solutions from screening to treatment.







# HPB IN PRACTICE



## STEP BY STEP THROUGH THE PROCEDURE

Fujifilm's extensive range of products and services is in a constant process of development, so that we can always provide advanced technology and at your side.

Thus, the company has transformed itself from a pure imaging company to a healthcare provider and from an endoscope manufacturer to a partner with solution systems.

We have mastered the GI field including therapeutic offerings; now we are applying our knowledge in the field of HPB examinations. We offer system solutions for access and stone management from diagnostics to therapy and continuing education, ensuring that we can accompany you step by step in your daily medical routine.



**FROM SCREENING ...**  
**ULTRASOUND**



EG-740UT ULTRASONIC ENDOSCOPE



**... TO TREATMENT ...**  
**ERCP**



JAZZ VALVE



ED-580XT VIDEO DUODENOSCOPE



AXS\_TOME+ SPHINCTEROTOME



ROCKSTAR LITHOTRIPTOR STONE EXTRACTION BASKET





# ENDOSCOPES



EG-740UT | SU-1 | ED-580XT

**Ultrasonography Systems**

14

**Duodenoscope**

22



# EG-740UT



**G-Lock**

**ULTRA-WIDE SCANNING ANGLE**

**SHORTER BENDING RADIUS**

**ADVANCED FORCE TRANSMISSION**

## HIGH PERFORMANCE TRANSDUCER TECHNOLOGY

Ultrasonography has changed the clinical approach to patients with digestive and respiratory diseases. Today, ultrasonography is being used to examine and visualise internal body structures for possible lesions, supporting definitive diagnosis and helping doctors to decide on a suitable approach to treatment.



Required balloon BS-102



**NEW** **EG-740UT** ULTRASONIC ENDOSCOPE **Curved Linear Array Scan**



The EG-740UT is equipped with the G-Lock guide wire locking mechanism which is incorporated at the distal end. This feature enables efficient exchange of devices. The large 4.0mm working channel enables the use of various endoscopic devices. It is designed to increase the clearance between the device and the working channel and to reduce the insertion resistance of devices.



**Endoscopic functions**

<b>Viewing direction</b>	40°
<b>Observation range</b>	3–100 mm
<b>Field of view</b>	140°
<b>Ø Distal end</b>	14.5 mm
<b>Ø Insertion tube</b>	12.6 mm
<b>Bending capability</b>	Up 150°/Down 100° Right 100°/Left 100°
<b>Working length</b>	1,250 mm
<b>Overall length</b>	1,550 mm
<b>Ø Working channel</b>	4.0 mm

**Ultrasonic functions**

<b>Scanning method</b>	Electronic curved linear array scan
<b>Scanning angle</b>	180°

**Large working channel**

The large 4.0 mm working channel enables the use of various endoscopic devices. It is designed to increase the clearance between the device and the working channel and to reduce the insertion resistance of devices.



**Ultra-wide scanning angle**

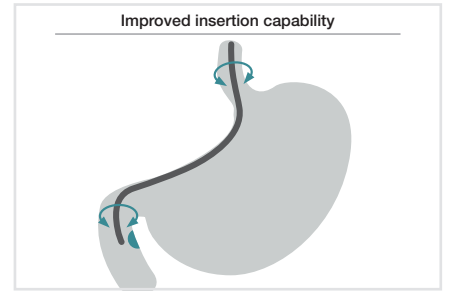
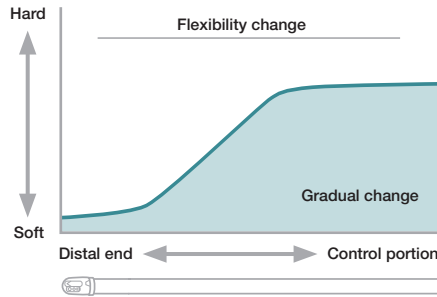
Due to the broader bandwidth and better acoustic sensitivity in combination with an improved signal to noise ratio, with the EG-740UT a crystal clear ultrasound image can be achieved. Furthermore, the ultra-wide scanning angle is aimed to support diagnostic and therapeutic procedures.





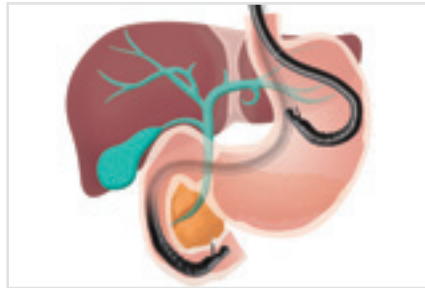
### Advanced force transmission

With the improved material elasticity, the stiffness of the insertion portion gradually increases from the distal end to the control portion, this enables direct transmission of the push, pull and rotational movements from the hand to the distal end of the endoscope when compared to the previous model.



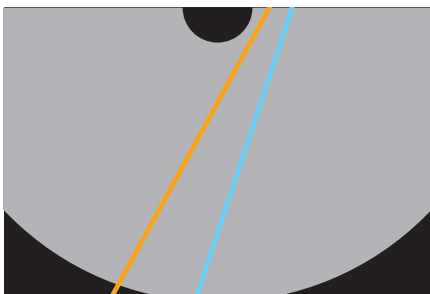
### Shorter bending radius

The shorter bending radius is designed to improve the access to the anatomical target that is to be assessed and/or treated.

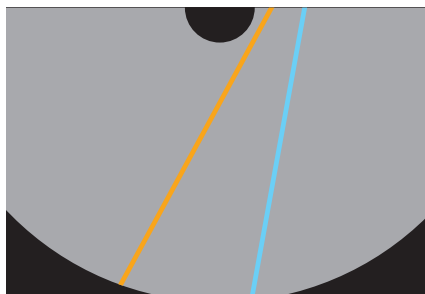


### Wide-angle puncture direction supporting wider FNA accessibility

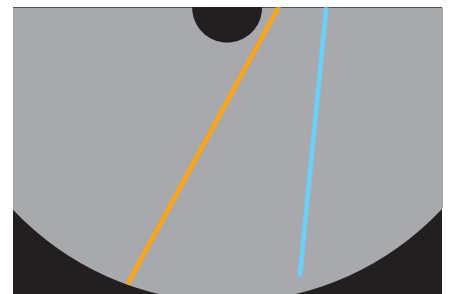
The combination of the short bending radius and the improved location of the transducer, enables broad FNA accessibility.



19G



22G

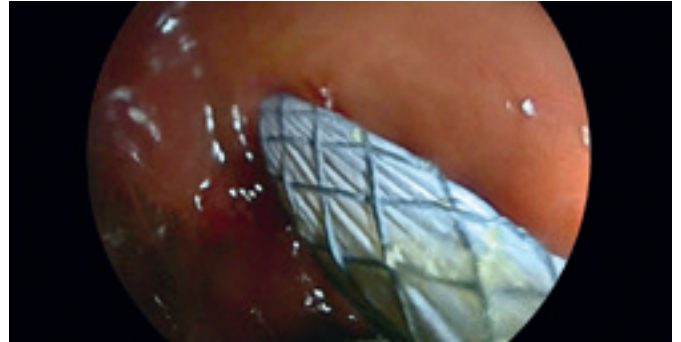
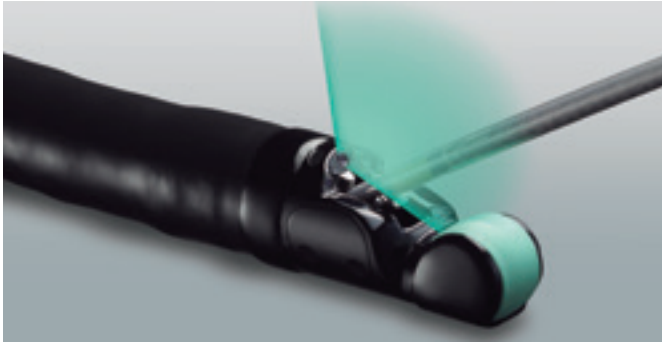


25G

— Forceps elevator UP  
— Forceps elevator DOWN

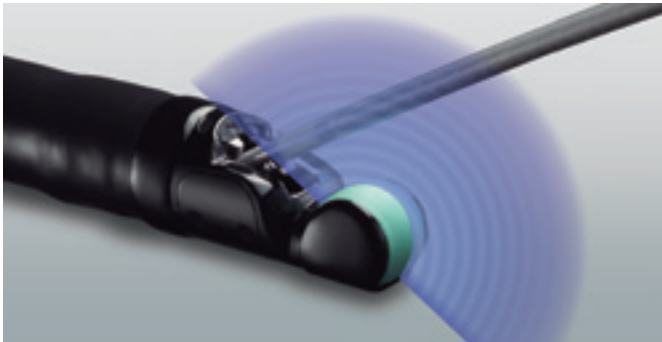
### Improved device visualisation on the endoscopic image

As the objective lens is placed behind the elevator, the device can be seen in the endoscopic image.



### Improved device visualisation on the ultrasound image

The position of the working channel outlet relative to the ultrasound transducer, ensures that the blind area between the working channel outlet and ultrasound scanning area is reduced.







## EG-580UT ULTRASONIC ENDOSCOPE Curved Linear Array Scan



With a small bending radius and short rigid section, this endoscope enables easy access to the targeted areas. A wide puncture range enables FNA (Fine Needle Aspiration Biopsy) from a variety of positions to achieve broader accessibility. The 40° front oblique view and 140° endoscopic field of view is expected to reduce stress during the insertion process. Combined with powerful 150° up-angulation, the endoscope is suitable for both observation and therapeutic procedures.



### Endoscopic functions

Viewing direction	40° (Forward oblique)
Observation range	3–100 mm
Field of view	140°
Ø Distal end	13.9mm
Ø Flexible portion	12.4mm
Bending capability	Up 150°/Down 150° Right 120°/Left 120°
Working length	1,250mm
Overall length	1,550mm
Ø Working channel	3.8mm

### Ultrasonic functions

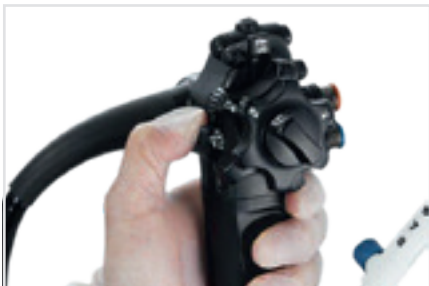
Scanning method	Electronic curved linear array scan
Scanning angle	150° (in combination with SU-1)



**40° front oblique,  
140° endoscopic field**

## FORCEPS ELEVATOR ASSIST

The Forceps Elevator Assist function ensures a steady maximum UP forceps elevation when the lever on the control portion is pulled down completely and clicks into place. This function reduces strain on the thumb caused by repeatedly operating the lever during procedures. It also supports flexible and subtle endoscopic operations during therapeutic procedures and stable puncture trajectory.



Hold maximum UP forceps elevator

## EG-580UR ULTRASONIC ENDOSCOPE Radial Scan



The shorter rigid section with a slim distal end of 11.4 mm, an upward bending capability of 190° and a direct forward view are designed to be useful and operate nearly the same as a standard gastroscope. The enhanced manoeuvrability supports the approach in retroflex observation of the fundus and cardia.

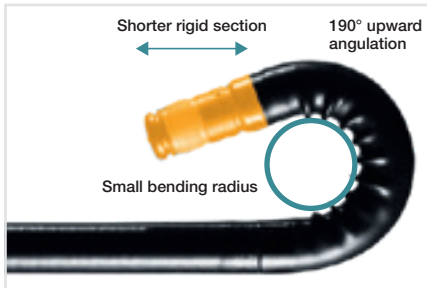


### Endoscopic functions

Viewing direction	0°
Observation range	3–100 mm
Field of view	140°
Ø Distal end	11.4 mm
Ø Flexible portion	11.5 mm
Bending capability	Up 190°/Down 90° Right 100°/Left 100°
Working length	1,250 mm
Overall length	1,550 mm
Ø Working channel	2.8 mm

### Ultrasonic functions

Scanning method	Electronic radial scan
Scanning angle	360° (in combination with SU-1)



### Great approach ability

## EUS BALLOON



Product code	Material Code	Characteristics	Compatible endoscopes	Unit
15920671	B20UR	Balloon	EG-580UR	20
15920683	B20UT	Balloon	EG-580UT	20
16708513	BS-102	Balloon	EG-740UT	20

## SU-1 ENDOSCOPIC ULTRASONIC PROCESSOR



<b>Power supply</b>	Power rating Frequency rating Power consumption	AC 100–240 V 50Hz/60 Hz 2.0–1.2 A
<b>Size</b>	Dimensions (W x H x D) Weight	390 × 135 × 485 mm 13.0 kg
<b>Ultrasonography image display</b>	Scanning method Probe types Scanning modes Special modes	Electronic scanning Curved linear array/radial B/M/CD/PD/PW/THI/CH/F-FLOW Elastography/CHI
<b>Received signal processing</b>	Received gain correction STC Sound speed correction Dynamic Range	0–100, 2-step 6-step gain settings per depth Full screen ROI settings 40–100, 5-step
<b>Display</b>	PinP Observation screen	Endoscopic/ultrasound imaging Hospital, date, time, patient
<b>Applicable</b>	Curved linear array Radial	EG-580UT, EG-530UT2, EB-530US EG-580UR, EG-530UR2
<b>Frequency</b>		5 MHz, 7.5 MHz, 10 MHz, 12 MHz
<b>Image input terminal</b>	DVI image input terminal	1
<b>Image output terminals</b>	Video terminal	1
	S-video terminal	1
	RGB TV terminal	1
	DVI terminal (digital)	1
	DVI terminal (digital/analog)	1
	HD-SDI terminal	2
<b>Sound output</b>	RCA terminal	1
<b>Control terminal</b>	Remote terminal	2
	Remote terminal (input)	1
	RS-232C terminal	1
	Keyboard terminal	1
	Foot switch terminal	1
	Network terminal	1
<b>Measurement function</b>	Measurement items	Distance, perimeter, area, volume, flow speed
<b>Storage</b>	Data formats Storage device Cine memory	JPEG, TIFF, DICOM, AVI Internal/external memory (USB) Storage/playback
<b>Accessories</b>		Keyboard, foot switch
<b>Image Modes</b>	B-Mode THI CH CHI	Fundamental Mode Tissue Harmonic Imaging Compound Harmonic Imaging Contrast Harmonic Imaging
<b>Doppler Mode</b>	PW CD PD F-Flow	Pulse Wave Doppler Colour Doppler Power Doppler
<b>Other</b>	M-Mode Elastography	Motion Mode
<b>Imaging</b>	PinP Biopsy	Picture-in-picture (realtime) Visibility of puncture range
<b>Storing</b>	Image Store Clip Store Internal SSD USB FTP DICOM	via keyboard/foot switch/endoscope button via keyboard/foot switch/endoscope button JPEG, TIFF, DICOM, AVI JPEG, TIFF, DICOM, AVI JPEG, TIFF, DICOM, AVI JPEG, TIFF, DICOM

### EUS TOWER: ALL-IN-ONE CONCEPT

Years of research and development to reduce patient discomfort and improve operator efficiency during endoscope examinations led to the development of Sonart, the integration of ultrasono-graphic diagnosis and endoscopy systems.

With the aim of supporting accurate diagnoses, proprietary image processing technology integrates improved endoscope manoeuvrability and insertion capability. The compact one-cart system supports various applications.



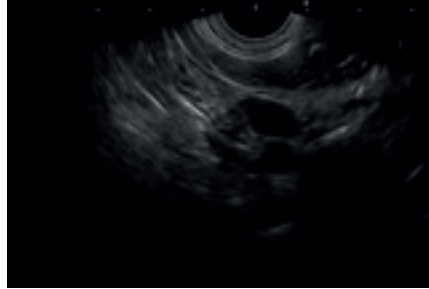
Easy-to-clean flat keyboard for use by touch panel and touch pad, also available with trackball keyboard

## VARIOUS IMAGING MODES



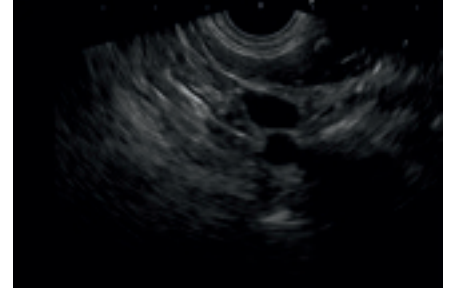
### High-resolution B-MODE

Pinpointing of the affected area, small vessels or pancreatic ducts might be viewed clearly, supporting accurate evaluation of the affected area and high-precision ultrasonographic results.



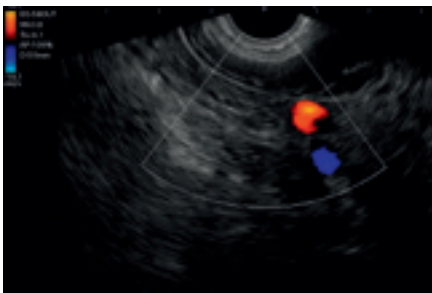
### THI (Tissue Harmonic Imaging)

Images are configured using higher harmonic components that are generated when ultrasound waves are reflected by the body's tissue. By increasing resolution and reducing artefacts, this mode enables ultrasound image observation with reduced noise.



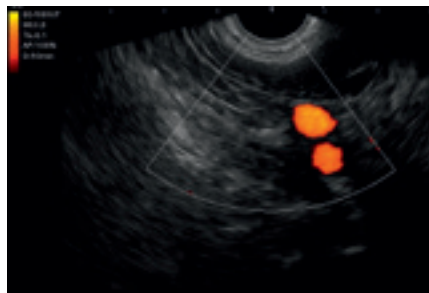
### CH (Compound Harmonic Imaging)

This mode visualises clear images in deep-lying areas while maintaining high-resolution images in shallow-lying areas to support accurate diagnoses by compounding B-mode and THI Ultrasound Mode.



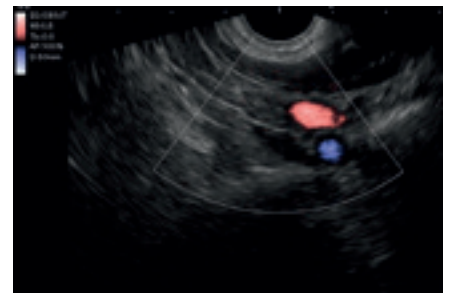
### Colour Doppler

Colour Doppler obtains hemodynamic information. It helps to locate an observation site and blood flow. Improved sensitivity of Colour Doppler might depict blood flow more precisely and reduce artefacts.



### Power Doppler

Power Doppler sonography is a technique that displays the strength of the Doppler signal in colour, rather than the speed and direction information. It is more sensitive and there is no possibility of signal aliasing.



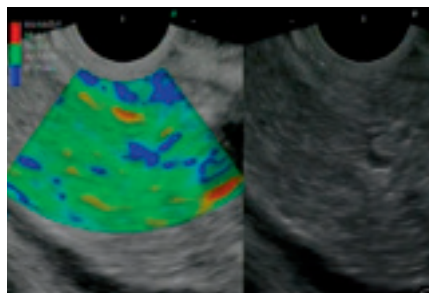
### F-Flow

F-Flow is a directional Power Doppler Mode that enables visualisation of tiny, low-flow vessels including flow direction with high-resolution.



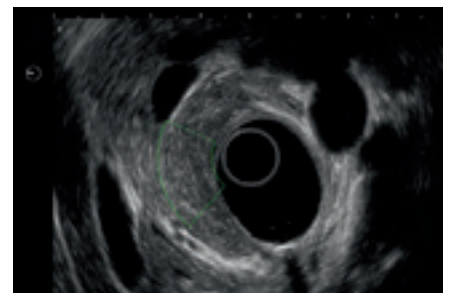
### CHI (Contrast Harmonic Imaging)

Images are created by extracting and emphasising higher harmonic signals generated by the injected contrast medium, assisting in detection of tumors and abnormal growths.



### Elastography

Relative stiffness of the tissue is visualised as a colour distribution map by calculating the distortion of the tissue caused by external compression or inner vibration, and displaying disparities in stiffness levels as different colours.



### Sound Speed Correction

Images are recomposed using the estimated optimal sound speed inside the body. With the SU-1, it is possible to set the ROI (Region Of Interest) and display a clearer image of the targeted area.



# ED-580XT



## GREATER ELEVATION FORCE

The Fujifilm video duodenoscope is designed to support quality and efficiency. It utilises a specially designed G-Lock elevator, enabling the guidewire to be simply and precisely fixed into position. The ED-580XT is made to support you during the most complex procedures.

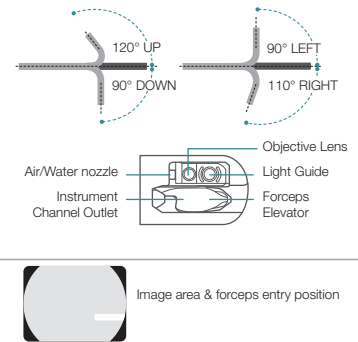
**G-Lock**  
Incorporated into the distal tip of the ED-580XT, the G-Lock contains the forceps elevator and the contact section. The round shaped forceps elevator reduces the risk of guidewire damage. The inner tube of the instrument channels uses an optimised material to enable a device to be inserted smoothly, supporting rapid device exchange. A unique distal attachment cap allows easy, fast and efficient cleaning. Designed to work in harmony with the endoscopist, the G-Lock and low friction instrument channel support efficiency and ease of use during ERCP procedures.



## ED-580XT VIDEO DUODENOSCOPE Therapeutic Type



<b>Viewing direction</b>	95° (retro viewing 5°)
<b>Field of view</b>	100°
<b>Observation range</b>	4–60 mm
<b>Bending capability</b>	Up 120° / Down 90° Right 110° / Left 90°
<b>Ø Distal end</b>	13.1 mm
<b>Ø Insertion tube</b>	11.3 mm
<b>Ø Working channel</b>	4.2 mm
<b>Working length</b>	1,250 mm
<b>Total length</b>	1,550 mm



## IMPROVED TREATMENT CAPABILITY

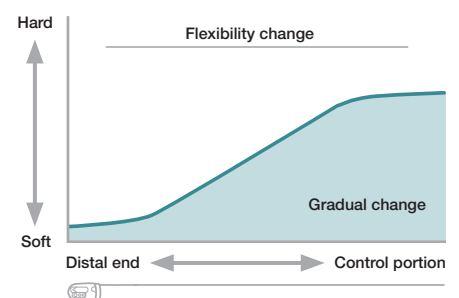
### Increased angle of endotherapy devices

The forceps elevator design increases the maximum angle that endotherapy devices can be introduced. Movement of the elevator lever at the control body of the duodenoscope translates accurately to the distal tip, allowing for very precise positioning of instruments.



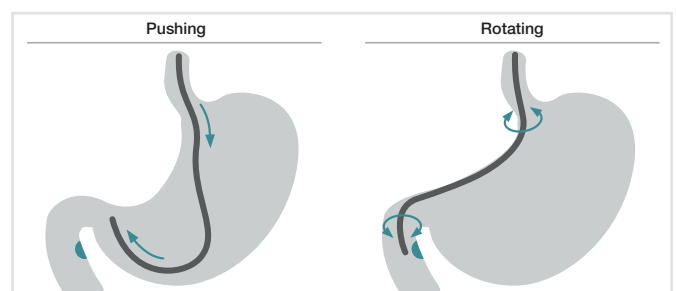
### Advanced force transmission

The flexible portion is designed to transmit the pushing, pulling and rotating movements from the hand to the distal end of the endoscope, providing enhanced manoeuvrability inside the digestive tract.



### Intuitive operation

The G7 control portion has a rounded surface design to fit comfortably in the hand of the operator, and its layout makes intuitive operation possible.







# LIGHT SOURCES & PROCESSORS



BL-7000 | VP-7000 | EP-6000

<b>Light Source &amp; Processor 7000</b>	28
<b>Light Source &amp; Processor 6000</b>	30





# BL-7000 & VP-7000



## FOR DEMANDING PROCEDURES

Our long-standing experience in developing imaging technologies also provides you with an excellent processor for your application at all times.

All models offer digital image processing and video interfaces. With ergonomic user controls, these video processors save valuable time and facilitate more comfortable examinations.

Video Processor VP-7000



Light Source BL-7000

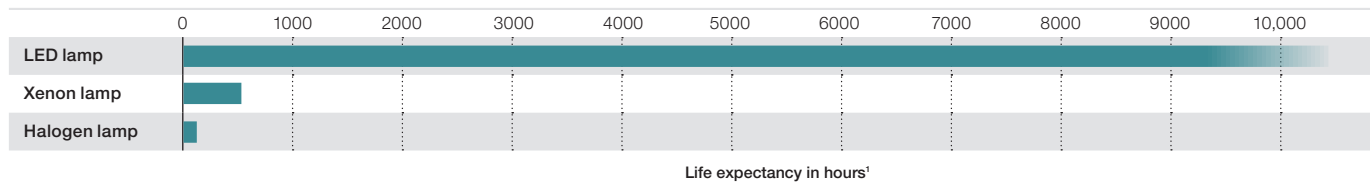


FUJIFILM group  
Green Policy

## BL-7000 ELUXEO™ 4-LED LIGHT SOURCE with High Durability

A reliable light source is a prerequisite for use in large clinics as well as smaller outpatient centres to ensure procedures can take place as scheduled. To achieve high standards, the eco-friendly ELUXEO™ 7000 system features the 4-LED Multi Light™ Source, which outperforms conventional Xenon or Halogen light sources: With 10,000 hours<sup>1</sup> average life expectancy for the LED lights, the ELUXEO™ system has far longer durability while having much lower energy consumption, resulting in better cost-efficiency.

Light source	4-LED
Air supply pump	High, Mid, Low, Off
Power rating	100–240V, 50/60Hz, 1.2–0.7A
Dimensions (W x H x D)	390 x 155 x 485 mm (including projection)
Weight	12.0 kg
Optical radiation safety	Class 1 LED product



Our confidence in the ELUXEO system BL-7000 is reflected by Fujifilm's **Durability Warranty**, which covers any defect of the LED light source unit that is attributable to a manufacturing or assembly fault under normal use for a period of five years or 10,000 operating hours, whichever comes first.<sup>1</sup>

## VP-7000 ELUXEO™ HIGH-PERFORMANCE VIDEO PROCESSOR



The ELUXEO™ video processor VP-7000 enables you to make use of the many features provided by Fujifilm's wide range of endoscopes along with the 4-LED illumination system and its LCI and BLI visualisation modes. In addition to the ELUXEO 700 series endoscopes, it is also compatible with the 600 and 500 series of endoscopes. The processor creates high-quality images displayed in full HD on the monitor. Automatic back-up mode for data storage is integrated and the processor is DICOM compatible.

Compatible endoscopes	700/600/500 series
Output	DVI-D x2, DVI-I x1, HD-SDI x2, RGB-TV x1, S VIDEO x1, VIDEO x1
Input	1 channel PoP
External memory	USB Flash Drive
Power rating	100–240V, 50/60Hz, 0.8–0.5A
Dimensions (W x H x D)	390 x 110 x 485 mm (including projection)
Weight	9.0 kg

<sup>1</sup> This Warranty is only valid according to the terms and conditions of the Durability Warranty Policy.



## EP-6000 ELUXEO™ Lite VIDEO PROCESSOR with Built-in LED Light Source



The ELUXEO™ Lite EP-6000 combines a reliable 3-LED light source with a processor that enables you to make use of the many features provided by Fujifilm’s wide range of endoscopes. Available combined with the 700 series LCI (Linked Color Imaging) and BLI (Blue Light Imaging) visualisation modes.

Due to the use of economical LED lamps with a long durability this system is very eco-friendly. It is also compatible with the 600 and 500 series of endoscopes. The ELUXEO™ Lite EP-6000 creates quality images and videos displayed in full HD on the monitor.

Automatic back-up mode for data storage is integrated and the processor is also DICOM compatible.

Light source	3-LED
Air supply pump	High, Mid, Low, Off
Compatible endoscopes	700, 600 and 500 series endoscopes*
Output	DVI-D x2, RGB-TV x1, S VIDEO x1, VIDEO x1
External memory	USB Flash Drive
Power rating	100–240V, 50/60Hz, 2.0–1.1A
Dimensions (W x H x D)	395 x 210 x 485 mm (including projection)
Weight	15.0 kg
Optical radiation safety	Class 1 LED product

Available observation modes	White Light	BLI	LCI	FICE
700 series	●	●	●	●
500/600 series	●			●



\* Excluding 590 series endoscopes, EG-530UT2, EG-530UT, EG-530UR2 and EG-530UR.



# ERCP



AXS\_TOME+ | GPS WIRE | TWIST'N'CATCH | ROCKSTAR | ROTACRUSH | KENA

<b>Sphincterotomes</b>	30
<b>Guide Wire Fixation</b>	34
<b>Cannulas</b>	35
<b>Guide Wires</b>	36
<b>Stone Extraction Balloons</b>	38
<b>Stone Extraction Baskets</b>	39
<b>Lithotripter Baskets</b>	40
<b>Biliary Stents</b>	44
<b>Dilation Balloons</b>	52



# AXS\_TOME+



## WHEN PRECISION MATTERS MOST

AXS\_tome+ offers reliable orientation as well as soft and gentle probing thanks to its improved Micro-Tip+ design. A user-friendly short wire port and optimised X-ray visibility make AXS\_tome+ the ultimate in safe and efficient handling.



**SMOOTH CANNULATION PERFORMANCE  
BY MICRO-TIP+-DESIGN**

**PRECISE TIP CONTROL**

**SAFE GUIDE WIRE EXCHANGE**

## AXS\_TOME+ SPHINCTEROTOMES 3 Lumen



Product code	Material Code	Characteristics	Cutting length (mm)	Ø Tip   Length (mm)	Accepted guide wire	Ø Working channel (mm)	Unit
PAP1-D7-20-35	70100147815	Micro-Tip+, CWT	20	4.2 Fr   5	.035"	2.8	5
PAP1-D7-25-35	70100147794	Micro-Tip+, CWT	25	4.2 Fr   5	.035"	2.8	5
PAP1-D7-30-35	70100147795	Micro-Tip+, CWT	30	4.2 Fr   5	.035"	2.8	5
PAP1-D8-20-35	70100147827	Micro-Tip+, monofil, rotatable	20	4.2 Fr   5	.035"	2.8	5
PAP1-D8-25-35	70100147828	Micro-Tip+, monofil, rotatable	25	4.2 Fr   5	.035"	2.8	5
PAP1-D8-30-35	70100147829	Micro-Tip+, monofil, rotatable	30	4.2 Fr   5	.035"	2.8	5
PAP1-P8-25-35	70100147796	Micro-Tip+, monofil, insulated cutting wire (ProCut), rotatable	12.5   12.5 proximal insulated	4.2 Fr   5	.035"	2.8	5
PAP1-P8-30-35	70100147825	Micro-Tip+, monofil, insulated cutting wire (ProCut), rotatable	15   15 proximal insulated	4.2 Fr   5	.035"	2.8	5



PAP1-D / P

## AXS\_TOME+ SPHINCTEROTOMES for easycure, 3 Lumen



Product code	Material Code	Characteristics	Cutting length (mm)	Ø Tip   Length (mm)	Accepted guide wire	Ø Working channel (mm)	Unit
PAP1-Q7-20-35	70100147798	Micro-Tip+, CWT	20	4.2 Fr   5	.035"	3.8	5
PAP1-Q7-25-35	70100147797	Micro-Tip+, CWT	25	4.2 Fr   5	.035"	3.8	5
PAP1-Q7-30-35	70100147832	Micro-Tip+, CWT	30	4.2 Fr   5	.035"	3.8	5
PAP1-S8-20-35	70100147833	Micro-Tip+, monofil, rotatable	20	4.2 Fr   5	.035"	3.8	5
PAP1-S8-25-35	70100147820	Micro-Tip+, monofil, rotatable	25	4.2 Fr   5	.035"	3.8	5
PAP1-S8-30-35	70100147812	Micro-Tip+, monofil, rotatable	30	4.2 Fr   5	.035"	3.8	5
PAP1-T8-25-35	70100147799	Micro-Tip+, monofil, insulated cutting wire (ProCut), rotatable	12.5   12.5 proximal insulated	4.2 Fr   5	.035"	3.8	5
PAP1-T8-30-35	70100147800	Micro-Tip+, monofil, insulated cutting wire (ProCut), rotatable	15   15 proximal insulated	4.2 Fr   5	.035"	3.8	5



PAP1-Q / S / T



# AXS\_TOME

## AXS\_TOME PRELOADED SPHINCTEROTOMES with GPS Wire, 3 Lumen



Product code	Material Code	Characteristics	Cutting length (mm)	Ø Tip   Length (mm)	Accepted guide wire	Length (mm)	Ø Working channel (mm)	Unit
PAP1-X7-25-35-450-OL	70100148363	Micro-Tip, CWT, preloaded GPS Wire	25	4.2 Fr   5	.035" 450 cm	2,000	2.8	5
PAP1-X8-30-35-260-OL	70100146711	Micro-Tip, monofil, preloaded GPS wire, for short wire technique	30	4.2 Fr   5	.035" 260 cm	2,000	3.8	5
PAP1-X8-30-35-450-OL	70100146541	Micro-Tip, monofil, preloaded GPS wire	30	4.2 Fr   5	.035" 450 cm	2,000	2.8	5



PAP1-X

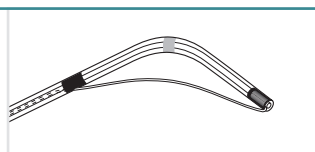
## AXS\_TOME SPHINCTEROTOMES 2 Lumen



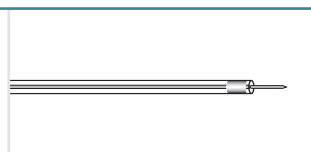
Product code	Material Code	Characteristics	Cutting length (mm)	Accepted guide wire	Length (mm)	Ø Working channel (mm)	Unit
PAP1-C2-20-35-OL	70100146538	Micro-Tip, CWT	20	.035"	2,000	2.0	5
PAP1-C2-25-35-OL	70100146567	Micro-Tip, CWT	25	.035"	2,000	2.0	5
PAP1-C2-30-35-OL	70100146620	Micro-Tip, CWT	30	.035"	2,000	2.8	5
PAP1-C5-20-35-OL	70100146568	Micro-Tip, monofil	20	.035"	2,000	2.8	5
PAP1-C5-30-35-OL	70100146621	Micro-Tip, monofil	30	.035"	2,000	2.8	5
PAP1-D2-30-21-OL	70100146601	Micro-Tip, CWT, Balloon Enteroscopy	30	.021"	2,600	2.0	2
PAP1-A2-20-35-OL	70100146619	Precut, CWT	20	.035"	2,000	2.8	5
PAP1-K2-06-35-OL	70100146562	Needle	6	.035"	2,000	2.8	5
PAP1-M2-20-35-OL	70100146569	B II, CWT	20	.035"	2,000	2.8	2
PAP1-N2-20-21-OL	70100146696	B II, CWT, Balloon Enteroscopy	20	.021"	2,600	2.0	2



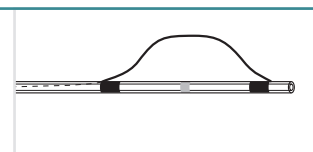
PAP1-C / D



PAP1-A



PAP1-K

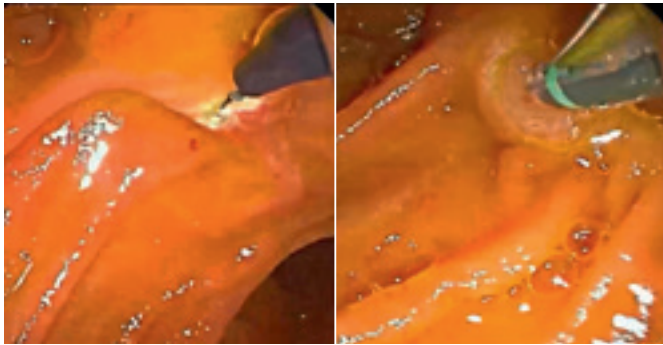


PAP1-M / N



### Conservative and safe approach

Our multi-stage catheter ensures stability during probing. Precision control of the catheter and reliable 11 o'clock orientation facilitate a conservative biliary approach. Owing to a smooth guide wire transition to the micro-tip it is possible to minimise tissue irritation and reduce the risk of complications.



### Compacted Wire Technology (CWT)

Compacted Wire Technology combines the benefits of a monofilament cutting wire with those of a braided cutting wire:

- High energy density for a clean cut
- Low thermal input due to the CWT structure
- Precision-control exploration

### Anatomical 3-D orientation

Based on systematic 11 o'clock orientation the AXS\_tome sphincterotomes also follow the left frontal anatomy of the distal choledochus.

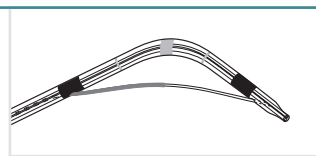
## AXS\_TOME SPHINCTEROTOMES for Easy Cure, 3 Lumen, Short & Long Wire Technique



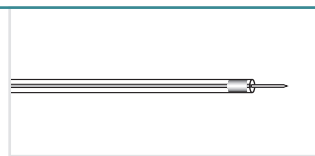
Product code	Material Code	Characteristics	Cutting length (mm)	Ø Tip   Length (mm)	Accepted guide wire	Length (mm)	Ø Working channel (mm)	Unit
PAP1-F8-30-E35-OL	70100146710	Micro-Tip, monofil, insulated cutting wire (ProCut)	15   15 proximal insulated	4.2 Fr   5	.035" ≥2,000 mm	2,000	3.8	5
PAP1-K8-06-E35-OL	70100146540	Needle	6		.035" ≥2,000 mm	2,000	3.8	5
PAP1-X8-30-35-260-OL	70100146711	Micro-Tip, monofil, preloaded GPS Wire	30	4.2 Fr   5	.035" ≥2,000 mm	2,000	3.8	5



PAP1-C / D



PAP1-A



PAP1-K



PAP1-X

## AXS\_TOME SPHINCTEROTOMES 1 Lumen



Product code	Material Code	Characteristics	Cutting length (mm)	Ø Working channel (mm)	Unit
PAP1-K1-06-OL	70100146561	Needle	6	2.8	5
PAP1-A1-20-OL	70100146708	Precut, braided wire	20	2.8	5

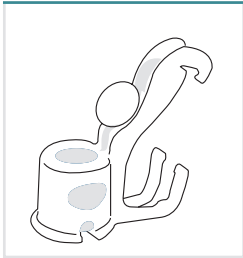




## EASY CURE GUIDE WIRE FIXATION



Product code	Material Code	Characteristics	Unit
SPE1-Y7	70100146823	Guide wire fixation (instrument fork) for Fujifilm and Olympus (from G5 series on)	5



SPE1-Y7

### Easy Cure: the platform with which your options increase

Where other systems tend to restrict you, Easy Cure offers extra options for ERCP. No matter whether it is a question of short or long-wire systems, the decision is yours. All the instruments are designed in such a way as to allow direct guide wire securement, either on the biopsy inlet channel or using an Albarran lever.



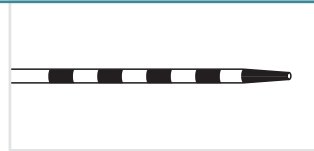
## ERCP-CANNULAS



Product code	Material Code	Characteristics	Length (mm)	Accepted guide wire	Ø Working channel (mm)	Unit
CAN1-A3-18-200-35	70100146579	Standard, 1 lumen, radiopaque marking	2,000	.035"	2.0	10
CAN1-A6-18-200-35	70100146688	Filiform, guide wire port, 1 lumen, radiopaque marking, tapered (2.3   1.8 mm)	2,000	.035"	2.8	10
CAN1-B3-18-200-35	70100146688	Filiform, 1 lumen, radiopaque marking	2,000	.035"	2.0	10
CAN1-B3-18-260-35	70100146580	Filiform, 1 lumen, radiopaque marking, Balloon Enteroscopy	2,600	.035"	2.0	2
CAN1-B4-18-200-35	70100146553	Filiform, 2 lumen, radiopaque marking, tapered (2.3   1.8 mm)	2,000	.035"	2.8	10
CAN1-B4-18-200-E35	70100146594	Filiform, 2 lumen, radiopaque marking, for short and long wire technique, tapered (2.3   1.8 mm)	2,000	.035" ≥2,000mm	3.2	2
CAN1-D5-18-200-35	70100146546	Bottle neck, 1 lumen, metal tip	2,000	.035"	2.0	10



CAN-A3



CAN-A6



CAN-B3



CAN-D5



# GPS WIRE



## ARRIVE SAFELY

The atraumatic tip of the GI Probing Scout ensures conservative exploration. The sturdy sheath reliably guides therapy instruments to their destination. A smooth transition between the hydrophilic tip and the coating enhances the precision control of your instruments.

In addition, handling is facilitated by the newly designed insertion aid.

## PRECISE EXPLORATION

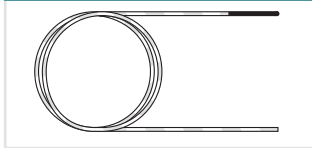
## STABLE INSTRUMENT GUIDANCE

## SMOOTH TRANSITION BETWEEN TIP AND COATING

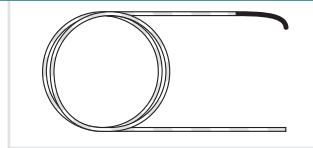
## GPS WIRE GUIDE WIRES with Hydrophilic Tip



Product code	Material Code	Characteristics	Diameter	Length (mm)	Unit
WIR1-S6-35-260	70100146742	Straight, Nitinol, insulated, green/white	.035"	2600	5
WIR1-S6-35-450	70100146743	Straight, Nitinol, insulated, green/white	.035"	4500	5
WIR1-J6-35-260	70100147764	J-tip, Nitinol, insulated, green/white	.035"	2600	5
WIR1-J6-35-450	70100146828	J-tip, Nitinol, insulated, green/white	.035"	4500	5



WIR1-S6



WIR1-J6

## GUIDE WIRES



Product code	Material Code	Characteristics	Diameter	Length (mm)	Unit
WIR1-F7-35-260	70100146812	Straight, Nitinol, coated, extra stiff	.035"	2,600	2
WIR1-F7-35-400	70100146827	Straight, Nitinol, coated, extra stiff	.035"	4,000	2



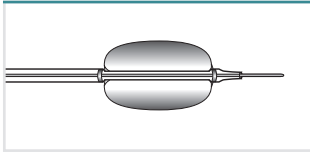
WIR1-F7



## STONE EXTRACTION BALLOONS



Product code	Material Code	Characteristics	Ø Balloon (mm)	Accepted guide wire	Length (mm)	Ø Working channel (mm)	Unit
BAL1-B2-16-75-200-35	70100146544	Distal radiopaque marking, 2 lumen, tapered (7   5 Fr)	16	.035"	2,000	2.8	5
BAL1-C2-16-07-200-35	70100146700	Distal radiopaque marking, 2 lumen	16	.035"	2,000	2.8	5
BAL1-C3-18-07-200-35	70100146701	Distal radiopaque marking, 3 lumen	16	.035"	2,000	2.8	5
BAL1-C3-18-07-200E35	70100146545	Distal radiopaque marking, tapered, 3 lumen, for short and long wire technique	16	.035" ≥2,000 mm	2,000	3.2	2



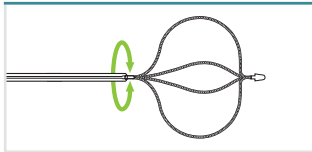
BAL1-B / C

## TWIST'N'CATCH STONE EXTRACTION BASKETS



The impressive expansion force and precise control of the basket allow swift capture of stones. Infinite adjustment of basket diameter permits highly flexible use. As a result, gallstones can be retrieved reliably.

Product code	Material Code	Characteristics	Ø Basket (mm)	Accepted guide wire	Length (mm)	Ø Working channel (mm)	Unit
BAS1-K2-25-23-200	70100146704	Spherical, 130° rotation	35		2,000	2.8	5
BAS1-K3-35-28-200	70100146643	Spherical, 130° rotation, for short and long wire technique	35	.035" ≥ 2,000 mm	2,000	3.2	5



BAS1



### Collects and retains what it is supposed to by

- Maximum expansion force
- Precision control by rotary motion
- Infinite adjustment of basket size

ATTENTION: Fujifilm medwork products of the BAS series are perfectly suited for use with other system products in this series. Please note that when combined with products/instruments from other manufacturers substantial functional limitations may occur. A liability of Fujifilm medwork for such cases is excluded.

Manufactured by Fujifilm medwork GmbH.





# ROCKSTAR



## THE RIGHT TOOL FOR EVERY SITUATION

No matter how large the 'rock' may be, Rockstar is fearless: with the new stone remover for lithotripsy you are ideally equipped for retrieving gallstones. The guide wire lumen enables you to reach the location of the stone reliably.

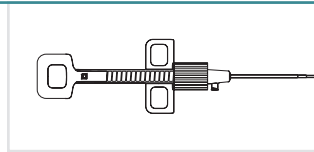
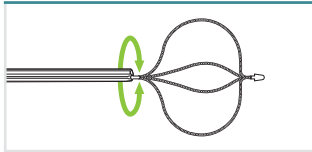
**INNOVATIVE OPERATING CONCEPT**  
**INTUITIVE PULVERISATION IF NECESSARY**



## ROCKSTAR LITHOTRIPTOR STONE EXTRACTION BASKET



Product code	Material Code	Characteristics	Ø Basket (mm)	Accepted guide wire	Length (mm)	Ø Working channel (mm)	Unit
BAS3-K2-35-35-200	70100146558	twist n' CATCH-Basket, integrated lithotripsy function	35	.035"	2,000	4.2	2

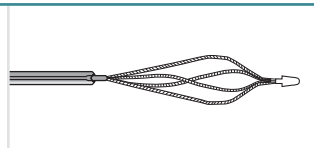
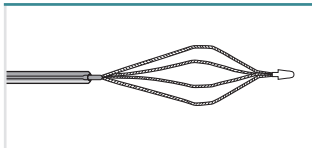


BAS3

## STONE EXTRACTION BASKETS



Product code	Material Code	Characteristics	Ø Basket (mm)	Length (mm)	Ø Working channel (mm)	Unit
BAS1-A2-20-23-200	70100146699	Hexagonal	20	2,000	2.8	5
BAS1-A2-25-23-200	70100146702	Hexagonal	25	2,000	2.8	5
BAS1-A2-30-23-200	70100146661	Hexagonal	30	2,000	2.8	5
BAS1-A2-35-23-200	70100146641	Hexagonal	35	2,000	2.8	5
BAS1-C1-20-18-260	70100146573	Half twisted, Balloon Enteroscopy	20	2,600	2.0	2
BAS1-C2-25-23-260	70100146642	Half twisted, Balloon Enteroscopy	25	2,600	2.8	2



BAS1-A

BAS1-C

ATTENTION: Fujifilm medwork products of the BAS series are perfectly suited for use with other system products in this series. Please note that when combined with products/instruments from other manufacturers substantial functional limitations may occur. A liability of Fujifilm medwork for such cases is excluded.

Manufactured by Fujifilm medwork GmbH.



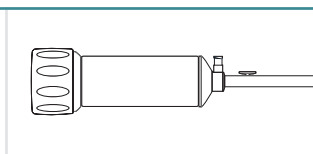
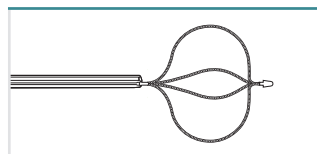


## ROTACRUSH LITHOTRIPTOR



Ready to use immediately without assembly. With the proven twist'n'CATCH basket you capture stones quickly and reliably. The crown head design of the metal coil ensures precision force transmission to the stone and protects against basket detachment. The handle offers an integrated, additional Power<sup>2</sup> function for really tough cases.

Product code	Material Code	Characteristics	Ø Basket (mm)	Length (mm)	Ø Working channel (mm)	Unit
LIT3-K2-30-35-200	70100146975	twist'n'CATCH-Basket, integrated catheter, spiral spring, handle	35	2,000	3.8	1

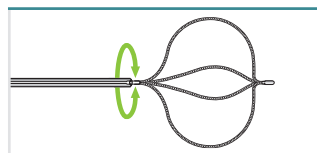


LIT3

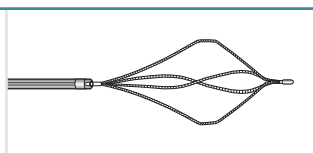
## LITHOTRIPTOR BASKETS



Product code	Material Code	Characteristics	Ø Basket (mm)	Length (mm)	Ø Working channel (mm)	Unit
twist'n'CATCH LIT1-K2-25-23-200	70100146966	Spherical, 130° rotation	35	2,000/4,000	2.8	2
LIT1-C3-20-23-200	70100146996	Half twisted	20	2,000/4,000	2.8	2
LIT1-C3-25-23-200	70100146965	Half twisted	25	2,000/4,000	2.8	2
LIT1-C3-30-23-200	70100146986	Half twisted	30	2,000/4,000	2.8	2
LIT1-C3-35-23-200	70100146970	Half twisted	35	2,000/4,000	2.8	2



LIT1-K2



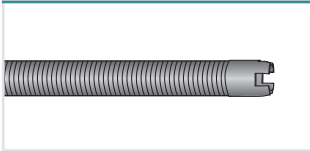
LIT1-C3



## LITHOTRIPTOR SPRINGS



Product code	Material Code	Characteristics	Length (mm)	Ø Working channel (mm)	Unit
LIT1-G4-26-185	70100146988	Spiral spring, transendoscopic, bile duct	1,850	2.8	2
LIT1-N4-38-090	70100146957	Spiral spring, emergency, bile duct	900		2

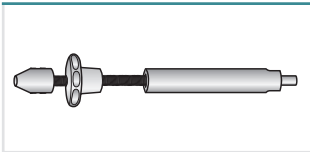


LIT1-G4

## LITHOTRIPTOR HANDLE

134°C

Product code	Material Code	Characteristics	Unit
LIT2-D-HAN	70100146616	Reusable Handle, pull-through technique	1



LIT2-D

ATTENTION: Fujifilm medwork products of the BAS series are perfectly suited for use with other system products in this series. Please note that when combined with products/instruments from other manufacturers substantial functional limitations may occur. A liability of Fujifilm medwork for such cases is excluded.

Manufactured by Fujifilm medwork GmbH.



# KENA



## HARMONICALLY COMBINED

Tuned to the finest detail: the Kena series allows simple and precise placement of the prosthesis as a result of the excellent interplay between bending strength and flexibility. Even multi-stenting with different prosthetic diameters (8.5 & 10 Fr), including repositioning, is extremely efficient with the One-for-All placement system.

## INFINITELY ADJUSTABLE GUIDE CATHETER LENGTH

## PRECISE PLACEMENT OF PROSTHESIS THROUGH ACCURATE FORCE TRANSMISSION

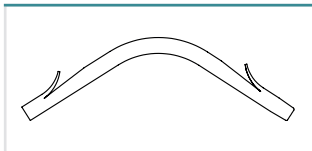
## THE ONE-FOR-ALL PLACEMENT SYSTEM



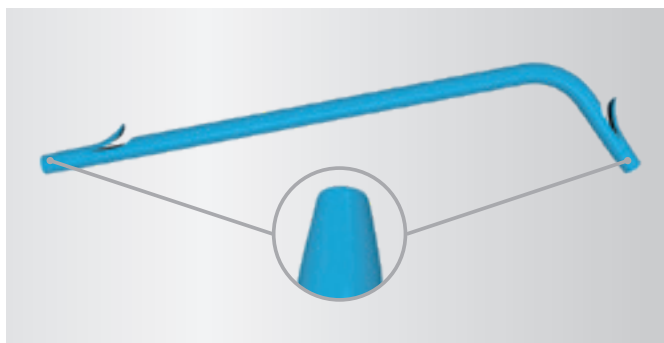
## KENA BILIARY STENT 2 Flaps, Centre Bend



Product code	Material Code	Color	Ø Stent (Fr)	Length between flaps (mm)	Total Length (mm)	Unit
PRO1-C2-07-05	70100147774	Grey	7	50	65	1
PRO1-C2-07-07	70100147775	Grey	7	70	85	1
PRO1-C2-07-09	70100147767	Grey	7	90	105	1
PRO1-C2-07-11	70100147835	Grey	7	110	125	1
PRO1-C2-07-13	70100147836	Grey	7	130	145	1
PRO1-C2-07-15	70100147837	Grey	7	150	165	1
PRO1-C2-07-17	70100147838	Grey	7	170	185	1
PRO1-C2-07-19	70100147831	Grey	7	190	205	1
PRO1-C2-08-05	70100147787	Green	8.5	50	65	1
PRO1-C2-08-07	70100146792	Green	8.5	70	85	1
PRO1-C2-08-09	70100147830	Green	8.5	90	105	1
PRO1-C2-08-11	70100146796	Green	8.5	110	125	1
PRO1-C2-08-13	70100147839	Green	8.5	130	145	1
PRO1-C2-08-15	70100147816	Green	8.5	150	165	1
PRO1-C2-08-17	70100147817	Green	8.5	170	185	1
PRO1-C2-08-19		Green	8.5	190	205	1
PRO1-C2-10-05	70100147788	Blue	10	50	65	1
PRO1-C2-10-06	70100146769	Blue	10	60	75	1
PRO1-C2-10-07	70100147818	Blue	10	70	85	1
PRO1-C2-10-08	70100147765	Blue	10	80	95	1
PRO1-C2-10-09	70100146770	Blue	10	90	105	1
PRO1-C2-10-10	70100147766	Blue	10	100	115	1
PRO1-C2-10-11	70100147789	Blue	10	110	125	1
PRO1-C2-10-12	70100146771	Blue	10	120	135	1
PRO1-C2-10-13	70100146761	Blue	10	130	145	1
PRO1-C2-10-14	70100146772	Blue	10	140	155	1
PRO1-C2-10-15	70100146773	Blue	10	150	165	1
PRO1-C2-10-17	70100146774	Blue	10	170	185	1
PRO1-C2-10-19	70100146775	Blue	10	190	205	1



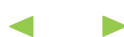
PRO1-C2



### Tips tapered on both sides

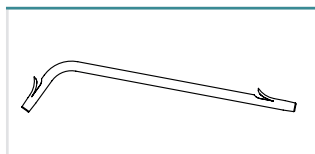
The unique bilateral tip facilitates placement and minimizes the perforation risk. Alternatively, the prosthesis can be laid across a bifurcation with the bend first and thus be anchored in place. This ensures a better hold and reduces the risk of migration.

Manufactured by Fujifilm medwork GmbH.



**KENA** BILIARY STENT 2 Flaps, Proximal Bend

Product code	Material Code	Color	Ø Stent (Fr)	Length between flaps (mm)	Total Length (mm)	Unit
PRO1-T2-07-05	70100146777	Grey	7	50	65	1
PRO1-T2-07-07	70100146815	Grey	7	70	85	1
PRO1-T2-07-09	70100146798	Grey	7	90	105	1
PRO1-T2-07-11	70100146778	Grey	7	110	125	1
PRO1-T2-07-13	70100146779	Grey	7	130	145	1
PRO1-T2-07-15	70100146741	Grey	7	150	165	1
PRO1-T2-07-17	70100147843	Grey	7	170	185	1
PRO1-T2-07-19	70100147840	Grey	7	190	205	1
PRO1-T2-08-05	70100146780	Green	8.5	50	65	1
PRO1-T2-08-07	70100146799	Green	8.5	70	85	1
PRO1-T2-08-09	70100147768	Green	8.5	90	105	1
PRO1-T2-08-11	70100147790	Green	8.5	110	125	1
PRO1-T2-08-13	70100146800	Green	8.5	130	145	1
PRO1-T2-08-15	70100146816	Green	8.5	150	165	1
PRO1-T2-08-17	70100147769	Green	8.5	170	185	1
PRO1-T2-08-19	70100146817	Green	8.5	190	205	1
PRO1-T2-10-05	70100146739	Blue	10	50	65	1
PRO1-T2-10-06	70100147770	Blue	10	60	75	1
PRO1-T2-10-07	70100146805	Blue	10	70	85	1
PRO1-T2-10-08	70100146806	Blue	10	80	95	1
PRO1-T2-10-09	70100146781	Blue	10	90	105	1
PRO1-T2-10-10	70100146744	Blue	10	100	115	1
PRO1-T2-10-11	70100147791	Blue	10	110	125	1
PRO1-T2-10-12	70100146745	Blue	10	120	135	1
PRO1-T2-10-13	70100146746	Blue	10	130	145	1
PRO1-T2-10-14	70100147819	Blue	10	140	155	1
PRO1-T2-10-15	70100146807	Blue	10	150	165	1
PRO1-T2-10-17	70100147776	Blue	10	170	185	1
PRO1-T2-10-19	70100146818	Blue	10	190	205	1



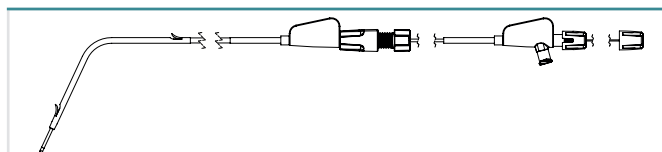
PRO1-T2



## KENA PRELOADED BILIARY STENT 2 Flaps, Centre Bend, for Long Wire Technique



Product code	Material Code	Color	Ø Stent (Fr)	Length between flaps (mm)	Total Length (mm)	Ø Working channel (mm)	Unit
PRO3-C2-08-05	70100147792	Green	8.5	50	65	4.2	1
PRO3-C2-08-07	70100147793	Green	8.5	70	85	4.2	1
PRO3-C2-08-09	70100147779	Green	8.5	90	105	4.2	1
PRO3-C2-08-11	70100147844	Green	8.5	110	125	4.2	1
PRO3-C2-08-13	70100147801	Green	8.5	130	145	4.2	1
PRO3-C2-08-15	70100147804	Green	8.5	150	165	4.2	1
PRO3-C2-08-17	70100147780	Green	8.5	170	185	4.2	1
PRO3-C2-08-19	70100147845	Green	8.5	190	205	4.2	1
PRO3-C2-10-05	70100146809	Blue	10	50	65	4.2	1
PRO3-C2-10-06	70100147846	Blue	10	60	75	4.2	1
PRO3-C2-10-07	70100146782	Blue	10	70	85	4.2	1
PRO3-C2-10-08	70100147824	Blue	10	80	95	4.2	1
PRO3-C2-10-09	70100146819	Blue	10	90	105	4.2	1
PRO3-C2-10-10	70100146783	Blue	10	100	115	4.2	1
PRO3-C2-10-11	70100146784	Blue	10	110	125	4.2	1
PRO3-C2-10-12	70100146820	Blue	10	120	135	4.2	1
PRO3-C2-10-13	70100146765	Blue	10	130	145	4.2	1
PRO3-C2-10-14	70100146785	Blue	10	140	155	4.2	1
PRO3-C2-10-15	70100146747	Blue	10	150	165	4.2	1
PRO3-C2-10-17	70100147842	Blue	10	170	185	4.2	1
PRO3-C2-10-19	70100147847	Blue	10	190	205	4.2	1
PRO3-C2-10-21	70100147807	Blue	10	210	225	4.2	1
PRO3-C2-10-23	70100147777	Blue	10	230	245	4.2	1
PRO3-C2-10-25	70100147848	Blue	10	250	265	4.2	1



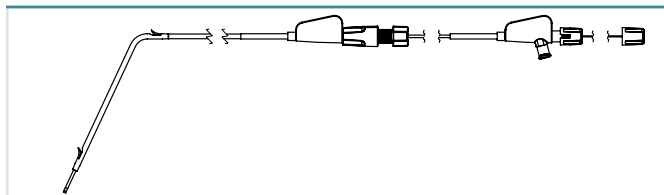
PRO3-C2



## KENA PRELOADED BILIARY STENT 2 Flaps, Proximal Bend, for Long Wire Technique



Product code	Material Code	Color	Ø Stent (Fr)	Length between flaps (mm)	Total Length (mm)	Ø Working channel (mm)	Unit
PRO3-T2-08-05	70100146763	Green	8.5	50	65	4.2	1
PRO3-T2-08-07	70100146786	Green	8.5	70	85	4.2	1
PRO3-T2-08-09	70100147781	Green	8.5	90	105	4.2	1
PRO3-T2-08-11	70100146748	Green	8.5	110	125	4.2	1
PRO3-T2-08-13	70100146808	Green	8.5	130	145	4.2	1
PRO3-T2-08-15	70100146749	Green	8.5	150	165	4.2	1
PRO3-T2-08-17	70100146750	Green	8.5	170	185	4.2	1
PRO3-T2-08-19	70100147778	Green	8.5	190	205	4.2	1
PRO3-T2-10-05	70100146751	Blue	10	50	65	4.2	1
PRO3-T2-10-06	70100147849	Blue	10	60	75	4.2	1
PRO3-T2-10-07	70100146764	Blue	10	70	85	4.2	1
PRO3-T2-10-08	70100146821	Blue	10	80	95	4.2	1
PRO3-T2-10-09	70100146752	Blue	10	90	105	4.2	1
PRO3-T2-10-10	70100146753	Blue	10	100	115	4.2	1
PRO3-T2-10-11	70100146787	Blue	10	110	125	4.2	1
PRO3-T2-10-12	70100146788	Blue	10	120	135	4.2	1
PRO3-T2-10-13	70100147782	Blue	10	130	145	4.2	1
PRO3-T2-10-14	70100146732	Blue	10	140	155	4.2	1
PRO3-T2-10-15	70100146733	Blue	10	150	165	4.2	1
PRO3-T2-10-17	70100146789	Blue	10	170	185	4.2	1
PRO3-T2-10-19	70100147783	Blue	10	190	205	4.2	1
PRO3-T2-10-21	70100147784	Blue	10	210	225	4.2	1
PRO3-T2-10-23	70100147771	Blue	10	230	245	4.2	1
PRO3-T2-10-25	70100147841	Blue	10	250	265	4.2	1



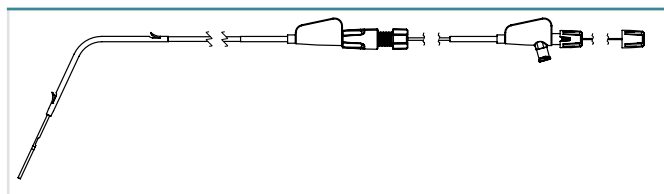
PRO3-T2



## KENA PRELOADED BILIARY STENT 2 Flaps, Centre Bend, for Short Wire Technique



Product code	Material Code	Color	Ø Stent (Fr)	Length between flaps (mm)	Total Length (mm)	Ø Working channel (mm)	Unit
PRO3-C3-08-05	70100149979	Green	8.5	50	65	4.2	1
PRO3-C3-08-07	70100149980	Green	8.5	70	85	4.2	1
PRO3-C3-08-09	70100149977	Green	8.5	90	105	4.2	1
PRO3-C3-08-11	70100149954	Green	8.5	110	125	4.2	1
PRO3-C3-08-13	70100149956	Green	8.5	130	145	4.2	1
PRO3-C3-08-15	70100149957	Green	8.5	150	165	4.2	1
PRO3-C3-08-17	70100149941	Green	8.5	170	185	4.2	1
PRO3-C3-08-19	70100149981	Green	8.5	190	205	4.2	1
PRO3-C3-10-05	70100149942	Blue	10	50	65	4.2	1
PRO3-C3-10-06	70100149982	Blue	10	60	75	4.2	1
PRO3-C3-10-07	70100149960	Blue	10	70	85	4.2	1
PRO3-C3-10-08	70100149958	Blue	10	80	95	4.2	1
PRO3-C3-10-09	70100149959	Blue	10	90	105	4.2	1
PRO3-C3-10-10	70100149961	Blue	10	100	115	4.2	1
PRO3-C3-10-11	70100149963	Blue	10	110	125	4.2	1
PRO3-C3-10-12	70100149943	Blue	10	120	135	4.2	1
PRO3-C3-10-13	70100149983	Blue	10	130	145	4.2	1
PRO3-C3-10-14	70100149962	Blue	10	140	155	4.2	1
PRO3-C3-10-15	70100149965	Blue	10	150	165	4.2	1
PRO3-C3-10-17	70100149984	Blue	10	170	185	4.2	1
PRO3-C3-10-19	70100149964	Blue	10	190	205	4.2	1
PRO3-C3-10-21	70100149967	Blue	10	210	225	4.2	1
PRO3-C3-10-23	70100149968	Blue	10	230	245	4.2	1
PRO3-C3-10-25	70100149944	Blue	10	250	265	4.2	1



PRO3-C3

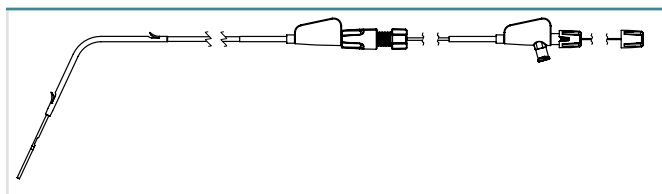




## KENA PRELOADED BILIARY STENT 2 Flaps, Proximal Bend, for Short Wire Technique



Product code	Material Code	Color	Ø Stent (Fr)	Length between flaps (mm)	Total Length (mm)	Ø Working channel (mm)	Unit
PRO3-T3-08-05	70100149945	Green	8.5	50	65	4.2	1
PRO3-T3-08-07	70100149969	Green	8.5	70	85	4.2	1
PRO3-T3-08-09	70100149966	Green	8.5	90	105	4.2	1
PRO3-T3-08-11	70100149970	Green	8.5	110	125	4.2	1
PRO3-T3-08-13	70100149971	Green	8.5	130	145	4.2	1
PRO3-T3-08-15	70100149946	Green	8.5	150	165	4.2	1
PRO3-T3-08-17	70100149972	Green	8.5	170	185	4.2	1
PRO3-T3-08-19	70100149947	Green	8.5	190	205	4.2	1
PRO3-T3-10-05	70100149948	Blue	10	50	65	4.2	1
PRO3-T3-10-06	70100149973	Blue	10	60	75	4.2	1
PRO3-T3-10-07	70100149985	Blue	10	70	85	4.2	1
PRO3-T3-10-08	70100149986	Blue	10	80	95	4.2	1
PRO3-T3-10-09	70100149987	Blue	10	90	105	4.2	1
PRO3-T3-10-10	70100149974	Blue	10	100	115	4.2	1
PRO3-T3-10-11	70100149988	Blue	10	110	125	4.2	1
PRO3-T3-10-12	70100149989	Blue	10	120	135	4.2	1
PRO3-T3-10-13	70100149975	Blue	10	130	145	4.2	1
PRO3-T3-10-14	70100149949	Blue	10	140	155	4.2	1
PRO3-T3-10-15	70100149950	Blue	10	150	165	4.2	1
PRO3-T3-10-17	70100149976	Blue	10	170	185	4.2	1
PRO3-T3-10-19	70100149951	Blue	10	190	205	4.2	1
PRO3-T3-10-21	70100149952	Blue	10	210	225	4.2	1
PRO3-T3-10-23	70100149953	Blue	10	230	245	4.2	1
PRO3-T3-10-25	70100149990	Blue	10	250	265	4.2	1



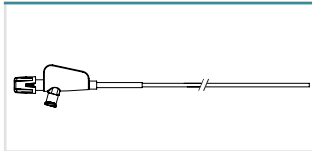
PRO3-T3



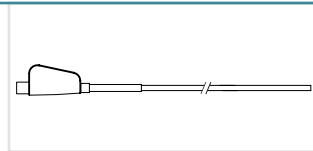
## KENA GUIDE CATHETERS, PUSHER & INSERTION KIT



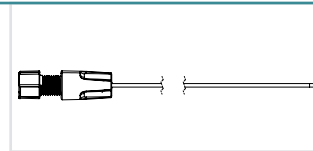
Product code	Material Code	Characteristics	Ø (Fr)	Length (mm)	Accepted guide wire	Ø Working channel (mm)	Unit
PRO1-P2-07-180	70100146776	Pusher, white, for 7 Fr biliary stents	7	1,800	.035"	2.8	2
PRO1-P1-09-180	70100146762	Pusher, white, for 8.5 and 10 Fr biliary stents	9	1,800	.035"	3.2	2
PRO1-K1-05-220-35	70100146797	Guide catheter, grey, for 8.5 and 10 Fr biliary stents	5	2,200	.035"	2.0	2
PRO1-S1-05-220-35	70100146829	Insertion kit for 8.5 and 10 Fr biliary stents, LL-connection, distal radiopaque marking	9	2,200	.035"	4.2	2
PRO1-K3-05-220-35	70100149955	Guide catheter, grey, for 8.5 and 10 Fr biliary stents, for short wire technique	5	2,200	.035"	2.0	2
PRO1-S1-09-220-35	70100149978	Insertion kit for 8.5 and 10 Fr biliary stents, radiopaque marking, for short wire technique	9	2,200	.035"	4.2	2



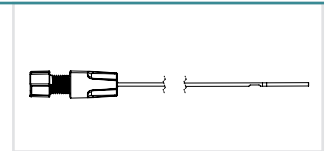
PRO1-P2



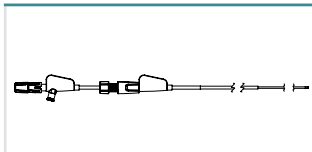
PRO1-P1



PRO1-K1



PRO1-K3



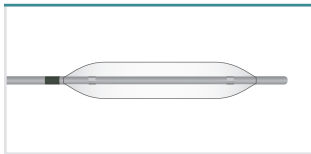
PRO1-S1



## DILATION BALLOONS for Short & Long Wire Technique



Product code	Material Code	Characteristics	Ø Balloon (mm)	Length Balloon (mm)	Working length (mm)	Accepted guide wire	Ø Working channel (mm)	Unit
DIL1-A1-06-40-23-35	70100146636	Tapered catheter (2.3/1.8 mm), 2 X-ray markers	6	40	2,300	.035" ≥ 2,000 mm	2.8	2
DIL1-A1-08-40-23-35	70100146669	Tapered catheter (2.3/1.8 mm), 2 X-ray markers	8	40	2,300	.035" ≥ 2,000 mm	2.8	2
DIL1-A1-10-40-23-35	70100146663	Tapered catheter (2.3/1.8 mm), 2 X-ray markers	10	40	2,300	.035" ≥ 2,000 mm	2.8	2
DIL1-A1-12-60-23-35	70100146605	2 X-ray markers	12	60	2,300	.035" ≥ 2,000 mm	2.8	2
DIL1-A1-14-60-23-35	70100146664	2 X-ray markers	14	60	2,300	.035" ≥ 2,000 mm	2.8	2
DIL1-A1-16-60-23-35	70100146670	2 X-ray markers	16	60	2,300	.035" ≥ 2,000 mm	2.8	2
DIL1-A1-18-60-23-35	70100146667	2 X-ray markers	18	60	2,300	.035" ≥ 2,000 mm	2.8	2
DIL1-A1-20-60-23-35	70100146606	2 X-ray markers	20	60	2,300	.035" ≥ 2,000 mm	3.2	2

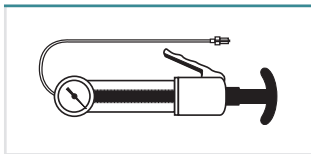


DIL1-A1

## INSUFFLATION DEVICE



Product code	Material Code	Characteristics	Unit
DIL1-B1-60	70100146584	60 ml volume, 12 atm maximum pressure	1



DIL1-B1



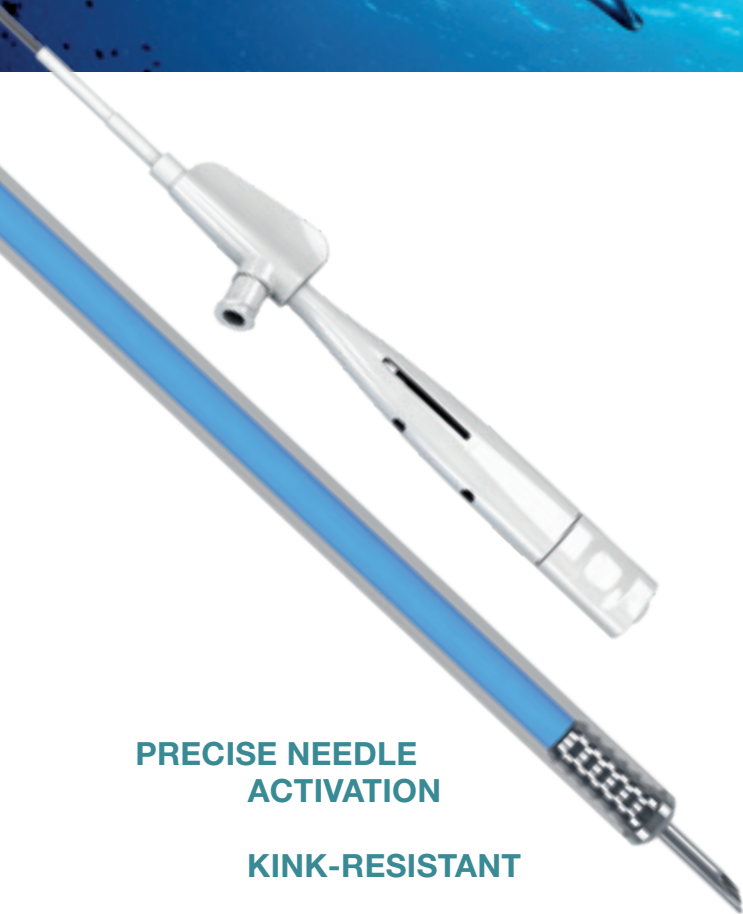
# PAPILLECTOMY



MANTA

<b>Injection Needles</b>	54
<b>Polypectomy Snares</b>	55

# MANTA



## IMPRESSIVE PRECISION IN EXTREME POSITIONS

Follows every curve: the flexible MANTA injection needle even finds its way through highly convoluted regions of the body and yet retains its extreme precision.

Maximum kink-resistance and single handed operation ease the application. The unique needle design makes the injection of fluids noticeably easier.

**PRECISE NEEDLE  
ACTIVATION**

**KINK-RESISTANT**

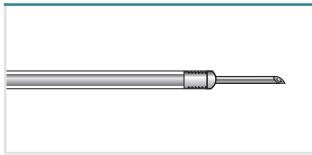
**EASY HANDLING DUE TO  
SINGLE HAND OPERATION**

## MANTA INJECTION NEEDLES



Manta ensures reliable retraction and extension of the needle, even in sharply angulated device positions, and prevents feared damage to the working channel. Maximum kink-resistance and single handed operation ease the application.

Product code	Material Code	Characteristics	Ø Needle   Length (mm)	Length (mm)	Ø Working channel (mm)	Unit
INJ1-A3-05-5-18-240	70100146666	Latching mechanism, distal needle guide, suitable with Histoacryl	0.5 (25 Gauge)   5	2,400	2.0	5
INJ1-A3-07-5-18-240	70100146657	Latching mechanism, distal needle guide, suitable with Histoacryl	0.7 (23 Gauge)   5	2,400	2.0	5

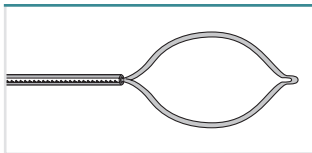


INJ-A3

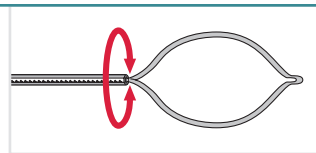
## POLYPECTOMY SNARES



Product code	Material Code	Characteristics	Ø Snare (mm)	Length (mm)	Ø Working channel (mm)	Unit
POL1-B9-10-23-220-OL	70100146687	Oval, monofil	10	2,200	2.8	10
POL1-B9-15-23-220-OL	70100146603	Oval, monofil	15	2,200	2.8	10
POL1-B9-22-23-220-OL	70100146571	Oval, monofil	22	2,200	2.8	10
POL1-B9-30-23-220-OL	70100146694	Oval, monofil	30	2,200	2.8	10
POL1-B3-10-23-220-OL	70100146624	Oval, rotatable, monofil	10	2,200	2.8	10
POL1-B3-15-23-220-OL	70100146604	Oval, rotatable, monofil	15	2,200	2.8	10
POL1-B3-22-23-220-OL	70100146625	Oval, rotatable, monofil	22	2,200	2.8	10
POL1-B3-30-23-220-OL	70100146686	Oval, rotatable, monofil	30	2,200	2.8	10



POL1-B9

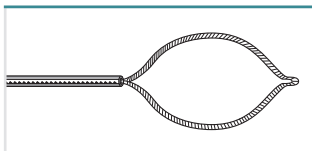


POL1-B3

## POLYPECTOMY SNARES



Product code	Material Code	Characteristics	Ø Snare (mm)	Length (mm)	Ø Working channel (mm)	Unit
POL1-B1-10-23-220-OL	70100146684	Convex, CWT	10	2,200	2.8	10
POL1-B1-15-23-220-OL	70100146542	Convex, CWT	15	2,200	2.8	10
POL1-B1-20-23-220-OL	70100146695	Convex, CWT	20	2,200	2.8	10
POL1-B1-30-23-220-OL	70100146586	Convex, CWT	30	2,200	2.8	10



POL1-B1 / B7

Manufactured by Fujifilm medwork GmbH.







# ACCESSORIES



RACoon | SHEPHERD | FROG | JAZZ

<b>Cleaning Brushes</b>	58
<b>Endoscope Protector</b>	59
<b>Biopsy Valves</b>	60
<b>Endoscope Valve Kit</b>	62
<b>Miscellaneous</b>	64

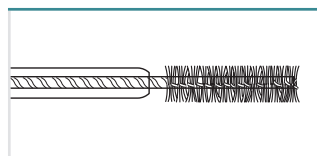




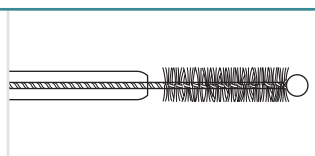
## RACoon BRUSH CLEANING BRUSHES



Product code	Material Code	Characteristics	Ø Brush (mm)	Length (mm)	Ø Working channel (mm)	Unit
CLE1-G1-50-18-180	70100146651	For gastroscope, 1 brush	5	1,800	min. 2.0	50
CLE1-G2-50-18-180	70100146644	For gastroscope, 2 brushes	5	1,800	min. 2.0	50
CLE1-C1-50-18-230	70100146548	For colonoscope, 1 brush	5	2,300	min. 2.0	50
CLE1-C1-65-18-230	70100146691	For colonoscope, 1 brush	6	2,300	min. 2.0	50
CLE1-C2-50-18-230	70100146582	For colonoscope, 2 brushes	5	2,300	min. 2.0	50
CLE1-C3-50-18-230	70100146595	For colonoscope, 3 brushes	5	2,300	min. 2.0	50
CLE1-V2-012	70100147811	For endoscope valve intake	11/5	120		10
CLE1-V2-012-50	70100147826	For endoscope valve intake	11/5	120		50
CLE1-C4-18-230	70100146583	For colonoscope, 1 brush, distal protection ball	5	2,300	2.2-4.2	50
CLE1-C6-18-230	70100146706	For colonoscope, 2 brushes, distal protection ball	5	2,300	2.2-4.2	50
CLE1-D2-18-230	70100146692	For colonoscope and endoscope valve intake, 2 brushes, distal protection ball	10/5	2,300	2.2-4.2	50



CLE1



CLE1-C4 / C6 / D2

## CLEANING BRUSHES for Duodenoscopes

Product code	Material Code	Where to use	Characteristics
WB7025DC	16560832	Working channel	
WB11003DV	16560820	Cylinder port	
WB1318DE	16556623	Elevator	

## CLEANING BRUSHES for Ultrasonic Videoscopes

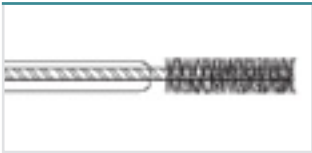
Product code	Material Code	Characteristics	Where to use
WB7024FW	16518827	Reusable	Working channel
WB7025DC	16560832		Working channel
WB11003FW	16518841	Reusable	Cylinder port
WB11003DV	16560820		Cylinder port
WB1318DE	16556623		Elevator
WB2221FW2	15909926	Reusable	Balloon Channel
WB2517DC	16667408		Balloon Channel



## CLEANING BRUSHES Colonoscope Kit



Product code	Material Code	Characteristics	Ø Working channel (mm)	Unit
CLE1-KIT2-COLO	70100147806	Colonoscope kit consisting of: 1 CLE1-C6-18-230 For colonoscope, 2 brushes, distal protection ball 1 CLE1-V2-016 For endoscope valve intake	2.2–4.2	50

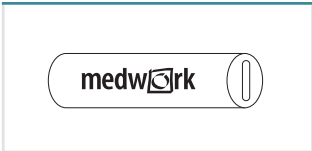


CLE1-C6

## SHEPHERD ENDOSCOPE PROTECTOR



Product code	Material Code	Characteristics	Ø Inner (mm)	Ø Outer (mm)	Length (mm)	Unit
SHP1-U1	70100147808	Endoscope protector in red, white, blue, green	4–10	37	140	50



SHP1-U1



# FROG



## PROTECTS AND SEALS TIGHT

Grips as tight as a frog's suction pad: the novel FROG Biopsy Valve seals especially tight, yet remains easy to open and close. Less friction allows quicker and less complicated insertion of instruments. Supplied in a practical, space saving dispenser with mounting option.



## OPTIMISED TIGHTNESS

## LESS FRICTION

## EASY TO OPEN AND CLOSE



## FROG BIOPSY VALVES



Product code	Material Code	Characteristics	Unit
VAL1-F1-100	70100146824	For Fujifilm and Olympus endoscopes	100
VAL1-P1-100	70100146810	For Pentax endoscopes	100

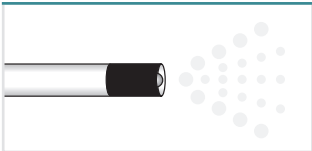


VAL1-F1

## SPRAY CATHETER



Product code	Material Code	Characteristics	Length (mm)	Ø Working channel (mm)	Unit
SPE1-B6-18-120	70100146734	Spray catheter	1,200	2.0	10
SPE1-C6-18-220	70100146735	Spray catheter	2,200	2.0	10



SPE1-B6 / C6



# JAZZ VALVE KIT



## PLAYFULLY EASY

When speed is essential you want the complete endoscope valve kit at hand in an instant. One packaging unit contains: Air/water valve, suction valve and biopsy valve.

**PROTECTION AGAINST INFECTION AND CROSS CONTAMINATION**

**NO RISKS INDUCED BY CLEANING, DRYING AND STORAGE**

**FAST AND RELIABLE PATIENT DOCUMENTATION DUE TO ADDITIONAL PRODUCT LABEL**

**PERFECT VALVE OPERATION EVERY TIME**

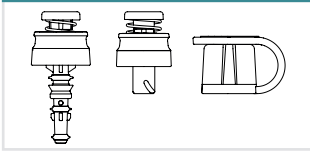
**REDUCING TIME AND EFFORT**



## JAZZ ENDOSCOPE VALVE KIT for 700 Series



Product code	Material Code	Characteristics	Compatible endoscope	Unit
VAL1-G7-50	70100146737	Disposable endoscope valve kit, consisting of air/water valve, suction valve and biopsy valve FROG	Fujifilm 700 series with G7 grip	50



VAL1-G7



### Traceability

Fast and reliable patient documentation due to additional self-adhesive label with product data.

## FORCEPS VALVES



Product code	Material Code	Characteristics	Compatible endoscope	Unit
FV-001	16632659	Forceps valve	Fujifilm endoscopes with G5 / G7 grip	10
FV-002	16663165	Forceps valve	Fujifilm EUS endoscopes	20



FV-002

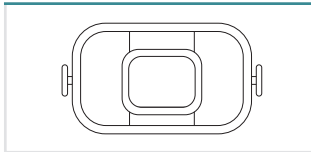


## BITE BLOCKS



Ergonomic controls, perfect fit, maximum protection.

Product code	Material Code	Characteristics	Ø Inner (mm)	Unit
BYT1-A3-20	70100146578	Standard, white, with OEKO TEX® strap	20	100
AN10018004	70100147834	With strap, latex-free	13	25
30148	70100147740	With oxygen connection, reusable		5



BYT1

## PRODUCT CLIP

Product code	Material Code	Characteristics	Unit
MIS2-PRO-CLIP	70100147813	Reusable product clip for fixation and reprocessing of flexible accessories, autoclavable up to 134° C, opening width 0-10 mm	20

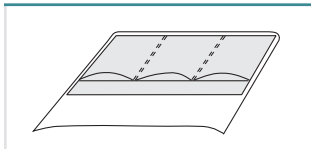


MIS2-Pro-Clip

## ERCP TOWEL



Product code	Material Code	Characteristics	Unit
MIS1-TOWEL-3	70100146673	ERCP towel, sterile, with 3 transparent insertion bags (30 x 26 cm), 75 x 90 cm	10
MIS1-TOWEL-4	70100146690	ERCP towel, sterile, with 4 transparent insertion bags (30 x 20 cm), 75 x 90 cm	10



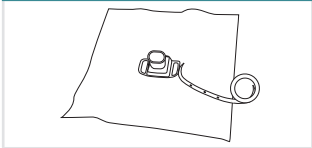
MIS1-Towel



## B1 DROPLET REDUCTION MOUTHPIECE



Product code	Material Code	Characteristics	Drape size (mm)	Compatible endoscopes	Unit
<b>B1 Droplet reduction mouthpiece with drape</b>	<b>16673263</b>	Functions as a face shield to reduce droplets from the gap between the mouthpiece and the corners of mouth With sponge rubber to reduce droplets from the oral cavity Latex-free silicone rubber band to fix the drape	300 x 300	Endoscopes or intubation tubes of the diameter from 3 to 16 mm	10



B1 Droplet reduction mouthpiece







# MONITORS & CARTS



EIZO™

**EIZO Monitors**

68

**Endoscopy Carts**




69



**Monitors for clear and natural images:** Fujifilm’s medical equipment incorporates advanced video technology. High-performance monitors used in conjunction with Fujifilm endoscopes reproduce sharp, genuine images.

**EIZO MONITORS\***

THIRD PARTY PRODUCT

Model	Description	Input signal	Output signal	Dimensions WxHxD (mm)	Weight (kg)
<b>EIZO CURATOR (UHD) EX3241 32" LCD with 4K resolution</b>	LED backlight with high brightness of max. 700 cd/m <sup>2</sup> , high-resolution of 3840 x 2160 px (4K), optical bonding for reduced reflections, Smart Resolution Sparse Coding (S.R.S.C.) for high-definition images and enhanced sharpness	Display Port (HDCP 1.3), HDMI (HDCP 2.2/1.4), BNC (12G-SDI), BNC (3G-SDI), DVI-D x 2 (HDCP 1.4)	BNC (12G-SDI), BNC (3G-SDI), DVI-D	760 x 463 x 87	12.8
<b>NEW</b> <b>EIZO CURATOR EX3220 32" LCD</b> 	LED backlight with high brightness of max. 650 cd/m <sup>2</sup> , high-definition, full multi-modality, degree of protection IP45 (front), IP32 (rear)	BNC (3G-SDI) x 2, DVI-D x 2 (HDCP 1.4), D-Sub 15 pin (mini), BNC (RGB C-Sync or Component), S-Video, BNC (Composite)	BNC (3G-SDI) x 2, DVI-D, BNC (RGB C-Sync or Component), S-Video, BNC (Composite)	760 x 463 x 99	9.9
<b>NEW</b> <b>EIZO CURATOR EX2721 27" Color LCD</b> 	LED backlight with high brightness of max. 900 cd/m <sup>2</sup> , high-definition, full multi-modality	BNC (3G-SDI), DVI-D x 2 (HDCP 1.4), D-Sub 15 pin (mini), S-Video, BNC (Composite)	BNC (3G-SDI), DVI-D, S-Video, BNC (Composite)	660 x 400 x 87	8.5
<b>EIZO Colour LCD 26" HD-Type LCD</b> 	LED backlight with high brightness of max. 700 cd/m <sup>2</sup> , high-definition, full multi-modality, displays up to three video sources simultaneously	BNC (3G-SDI) x 2, DVI-D x 2 (HDCP 1.4), D-Sub 15 pin (mini), BNC (RGB C-Sync or Component), S-Video, BNC (Composite)	BNC (3G-SDI) x 2, DVI-D, BNC (RGB C-Sync or Component), S-Video, BNC (Composite)	643 x 396 x 83	8.4



**EIZO CURATOR EX3241: 4K RESOLUTION IN COMBINATION WITH THE ELUXEO™ SYSTEM**

Monitors might not be available in all countries. Please check with your local distributor.  
\* Manufactured by EIZO Corporation, Japan.



**Strong and reliable carts:** The stable and flexible frames in different widths and heights empower enhanced procedural workflow. Used as single equipment tower, they ensure optimised space amount in surgical suites and offer maximum storage capacity.

## ENDOSCOPY CARTS \*\*

THIRD PARTY PRODUCT

Model	Material Code	Dimensions (WxHxD mm)	Weight (kg)	Characteristics
ITD-03 EUS Iso Plus	70100113037	618 x 1500 x 624	approx. 85	<b>EUS cart</b> 2x endoscope hanger, 4x shelves 2,000 VA, isolating transformer with insulation monitoring function
ITD-00	70100128566	614 x 1277 x 625	approx. 70	<b>Classic cart</b> 1x endoscope hanger, 3x shelves
ITD-03 Iso Plus	70100113035	540 x 1510 x 580	approx. 40	<b>Uni-cart sonoprobe</b> 3x shelves, 1x monitor stand 660 VA, isolating transformer



ITD-03 EUS Iso Plus



ITD-00



ITD-03 Iso Plus



**COMPACT SINGLE TROLLEY  
ACCOMODATES ALL DEVICES  
DIFFERENT FRAMES**

\*\* Manufactured by ITD GmbH, Germany.





# SERVICE



<b>Service &amp; Partnership</b>	72
<b>Training &amp; Education</b>	74

72
74



# OUR COMMITMENT TO **SERVICE**



## THINK GLOBALLY – ACT LOCALLY

Our service strategy aims for the highest customer satisfaction by offering a comprehensive service and being close to the customers. Eight service centers with the headquarters in Willich (Germany) are spread throughout Europe and employ highly qualified in-house technicians and experts in the field, allowing faster and better coverage for all customer needs.

**Our service network includes:**

- Willich (GER)
- Montigny, Toulouse (FRA)
- Barcelona, Porto (IBERIA)
- Milano (ITA)
- Prague (CZE)
- Istanbul (TUR)

**Our full comprehensive service contract covers:**

- In-house repair service
- All repair costs
- Highly qualified field service engineers
- Large variety of loan devices
- Maintenance service and damage prevention
- Support for reprocessing and on-site consulting



## POWERED BY PARTNERSHIP

Fujifilm, a pioneer in the field of diagnostic imaging and information systems for medical institutions, operates in about 50 group companies in Europe and employs over 4,500 people engaged in R&D, manufacturing, sales and service. Dialogue and continuous partnership have a special significance for us and at our locations. Our products and technologies are constantly being developed in agreement with you to meet your specific needs. Your contact partners are available for you – no matter where you are. Living this kind of partnership inspires us to do all we can to make the world a little better.







## OUR **TRAINING** OFFERS



### **ANYTIME – ANYWHERE**

One of the biggest challenges in endoscopy is the provision of training and education for healthcare professionals. To benefit endoscopy services, enhanced onsite training opportunities and greater hands-on-support from manufacturers is key.

Above all, there is a need for flexibility from the side of the manufacturers: Delivering training and education on site is of great advantage for the clinicians.

Having heard the challenges faced by endoscopists, Fujifilm has developed a series of training and education courses. The latest development is the mobile service unit first presented in 2022 – the EndoRunner.



## MOBILE HUB



The 'EndoRunner' is a mobile hub containing all the latest innovations in endoscopy from Fujifilm. The EndoRunner travels to hospitals and conferences across Europe to offer training and education opportunities to clinicians. It includes around twenty different flexible endoscopes and more than fifty different therapeutic devices for all kinds of applications.

To request a visit from the EndoRunner, get in touch at [endorunner\\_feg@fujifilm.com](mailto:endorunner_feg@fujifilm.com)

Further information and details about the EndoRunner tour can be found at [www.fujifilm-endorunner.com](http://www.fujifilm-endorunner.com)



## LEARNING PLATFORM



SeeLearn is Fujifilm's new online learning platform providing information on Fujifilm endoscopy technologies, sharing patient cases and studies, presenting webinars and learning tools to support education for professionals anytime and anywhere. Please visit

[seelearn-emea.fujifilm.com/](http://seelearn-emea.fujifilm.com/)



## ON-SITE TRAINING

Fujifilm offers hands-on trainings on a regular basis. If you are interested to join please contact for further information

[endoscopy\\_eu@fujifilm.com](mailto:endoscopy_eu@fujifilm.com)



**NEVER  
STOP**

**FUJIFILM**

**FUJIFILM Europe GmbH**

Balcke-Dürr-Allee 6 | 40882 Ratingen, Germany  
+49 2102 5364-0 | [endoscopy\\_eu@fujifilm.com](mailto:endoscopy_eu@fujifilm.com)  
[www.fujifilm-endoscopy.com](http://www.fujifilm-endoscopy.com)



Specifications are subject to change without notice. The name FUJIFILM and the FUJIFILM logo are trademarks of FUJIFILM Corporation. All other trademarks shown are trademarks of their respective owners. All rights reserved. SAP 70100155774\_08/2022.

