

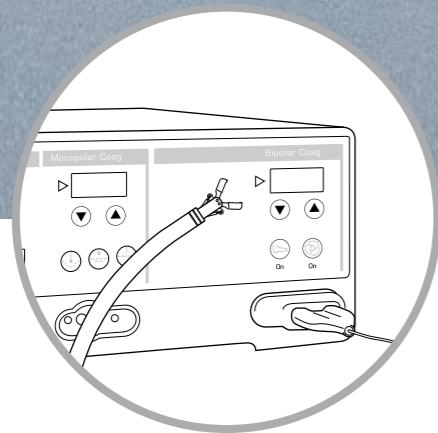
BIPOLAR



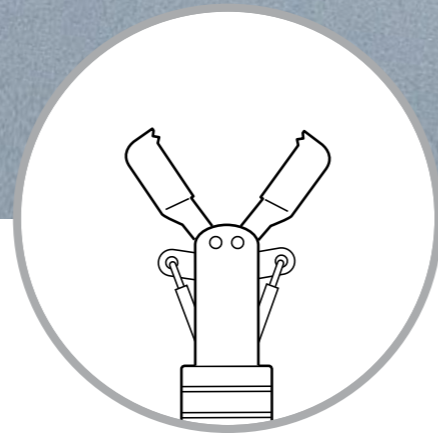
HemoStat WideCup:

Safe control of bleeding

HemoStat
WideCup



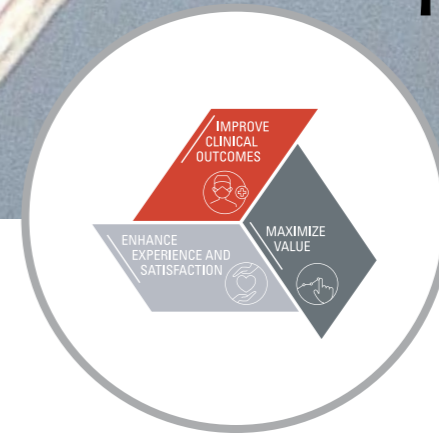
Product Information



Specifications

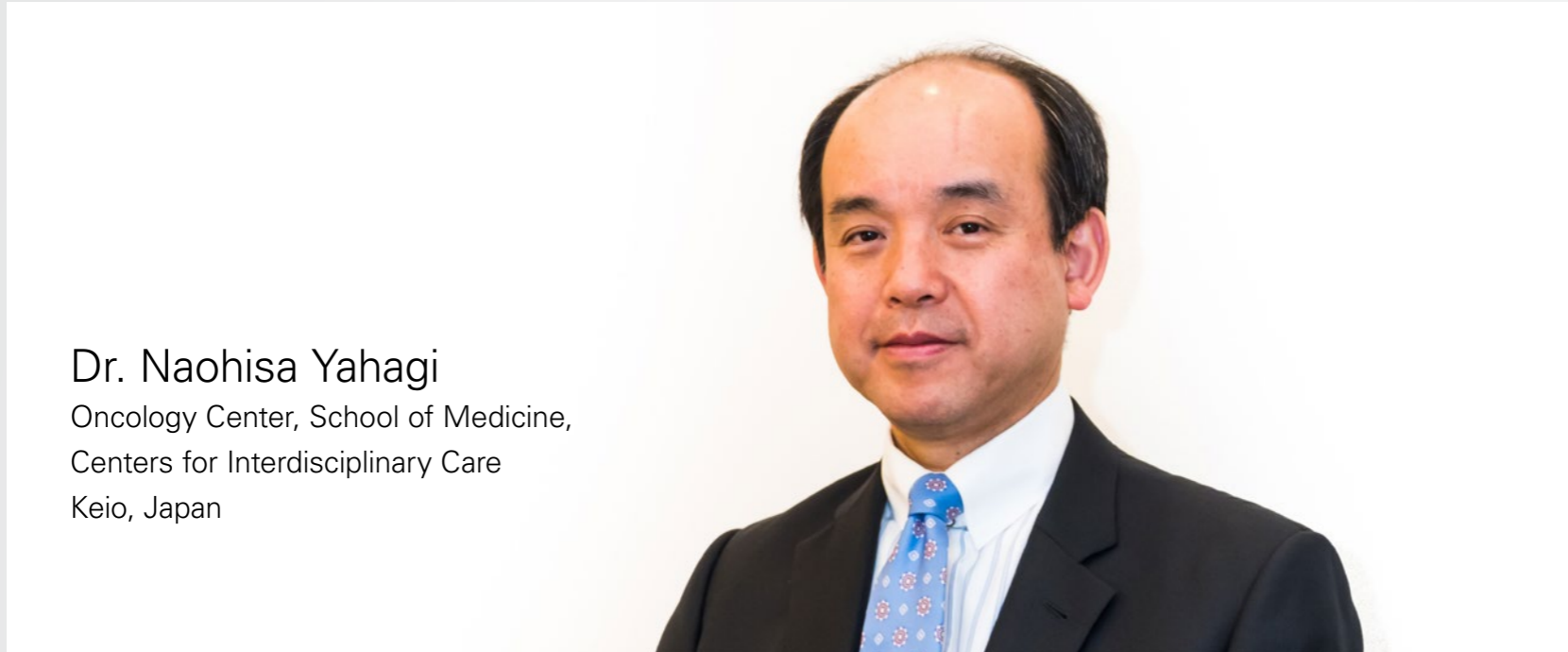


Clinical Experience



Triple Aim

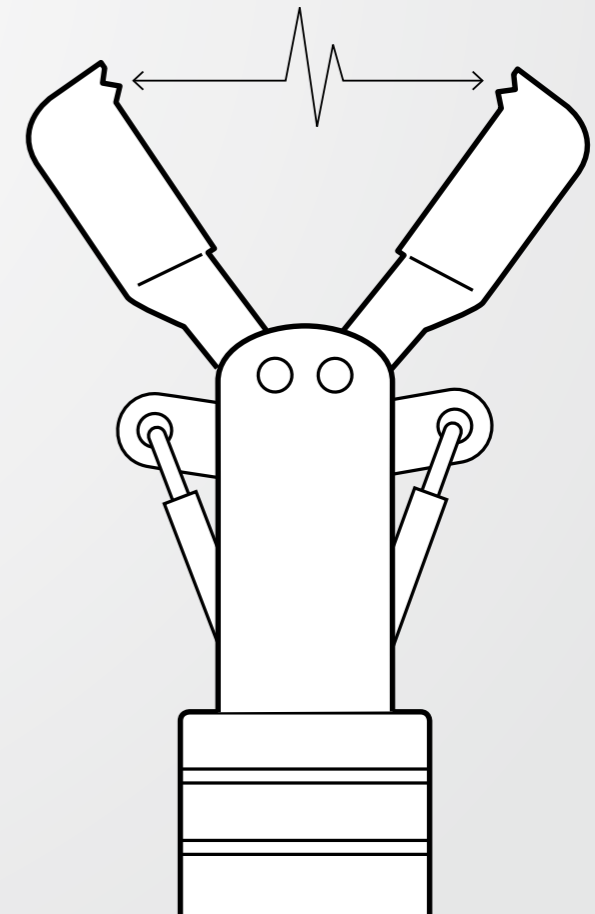
HemoStat WideCup: Developed by Dr. Yahagi



Dr. Naohisa Yahagi
Oncology Center, School of Medicine,
Centers for Interdisciplinary Care
Keio, Japan

I was involved in the design and development of the bipolar hemostasis forceps, HemoStat-Y. The primary development focus was to address small point coagulation during ESD, or after EMR and polypectomy, without damaging the peripheral area. Therefore we designed it to have small cups with a narrow opening width, letting it grasp the small blood vessels precisely. As a result, many doctors used it and we received a lot of valued feedback. Based on this, we improved maneuverability, made bigger cups for easy grasping, and increased the opening width. The wider opening width enables a new approach to apply the opened cups to a bleeding area and reach a bleeding point, which otherwise couldn't be found easily.


The high-frequency electricity only flows between the cups of the forceps.



HemoStat WideCup: **Easy control of bleeding**


Unique bipolar safety profile

The HemoStat WideCup has a unique bipolar technology for hemostasis, providing less impact on deeper tissue in terms of thermal degeneration with less risk of associated perforation.

Click for more information 


Easy hemostasis

The HemoStat WideCup is easy to use and increases the confidence of usage due to the lower risk of perforation in risky areas, such as thin wall sites like the colon, caecum, and duodenum. The HemoStat WideCup can also be used by patients with metal implants, as the current only flows between the cups and not through the patient.

Click for more information 

Multi GI application

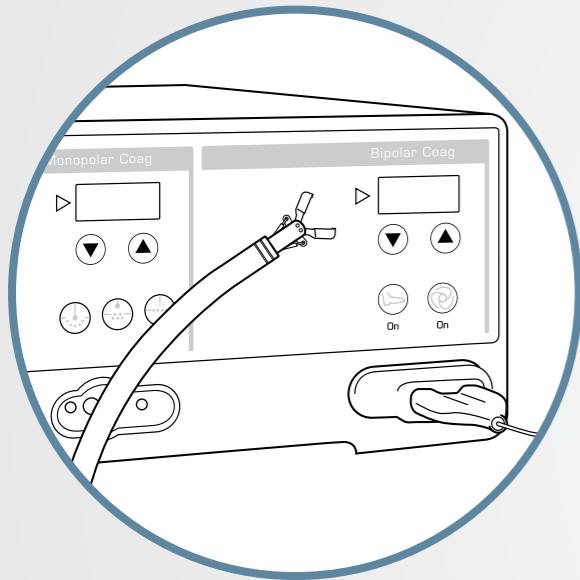
The HemoStat WideCup uses bipolar technology, making it extremely safe, effective, and cost-efficient. Additionally, it can be used in any GI therapeutic procedure that has the potential to cause bleedings.

Click for more information 



HemoStat WideCup, easy hemostasis: How to use?

1

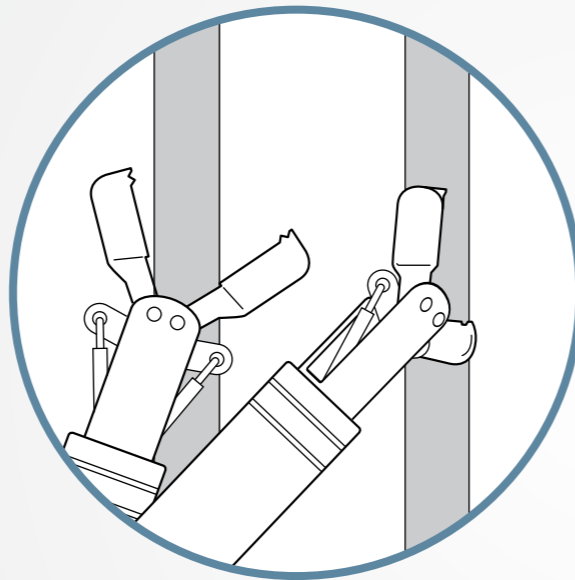


Set up

Input the recommended bipolar settings and plug the HemoStat WideCup into the bipolar socket, either directly or with an adaptor if required.

Click for more information [>](#)

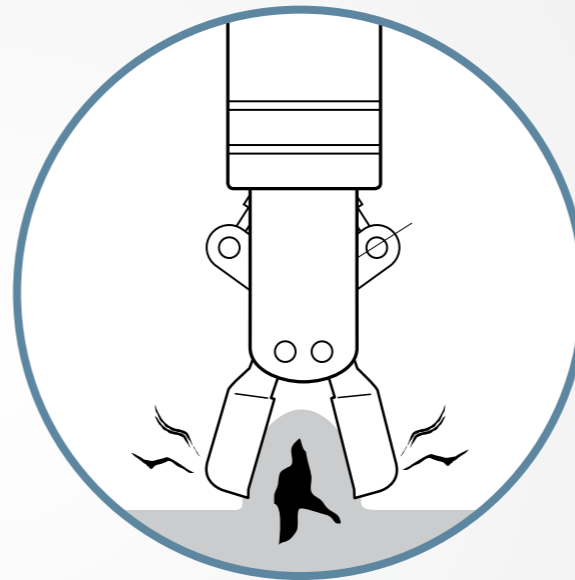
2



Position it

The bipolar forceps can complete hemostasis by touching the blood vessels horizontally or vertically. Rotation is unnecessary as the cups are able to energize even when in an open position.

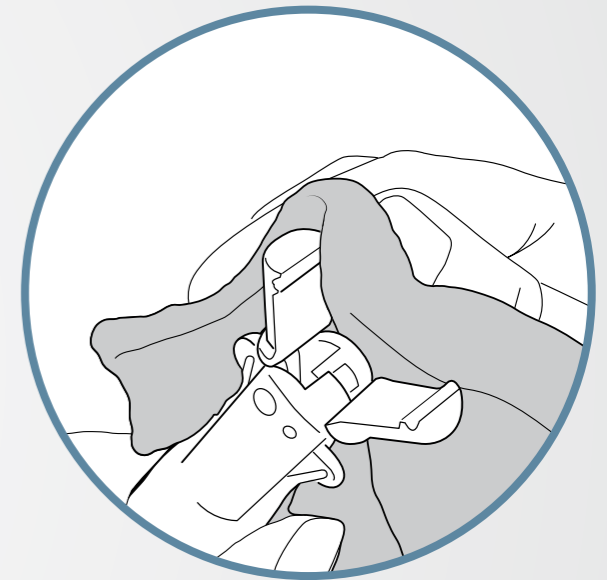
3



Grasp and energize

Whenever bleeding occurs, simply grasp or press the bleeding point between the cups and energize. There is no need for traction.

4



Clean it

To always ensure the best performance, keep cleaning the cups throughout the procedure with a sterile cloth, sterile gauze soaked with sterile water or sterile brush.

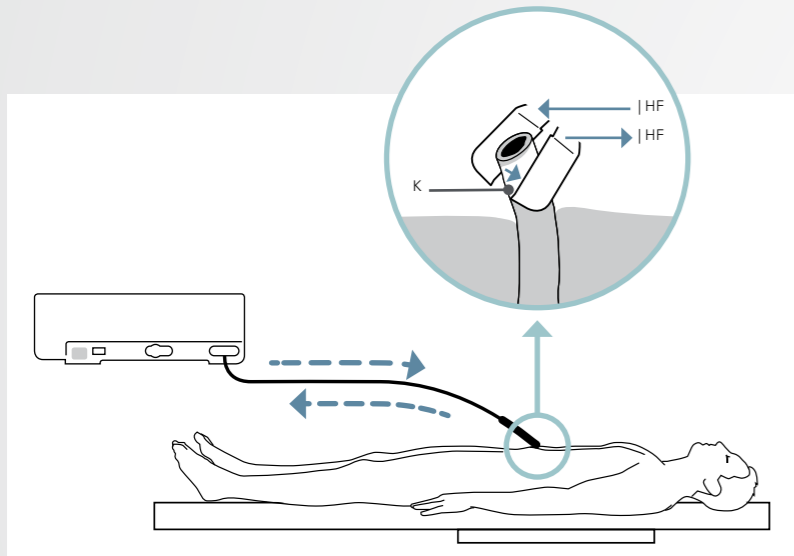


HemoStat WideCup, unique bipolar safety profile

Difference between monopolar vs. bipolar

How does it work?

Current flows only in between the cups

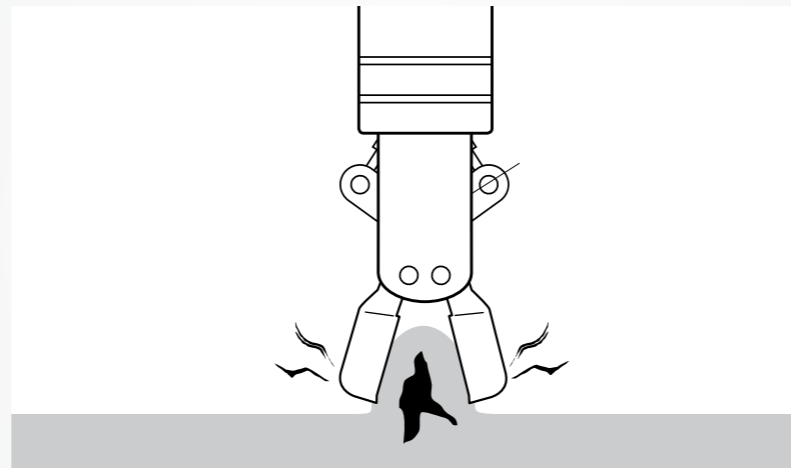


The bipolar method has no polar plate because the cups of the forceps itself function as a universal electrode and active electrode. Therefore, electricity doesn't flow outside the cups.

It is safer for patients with any metal implants.

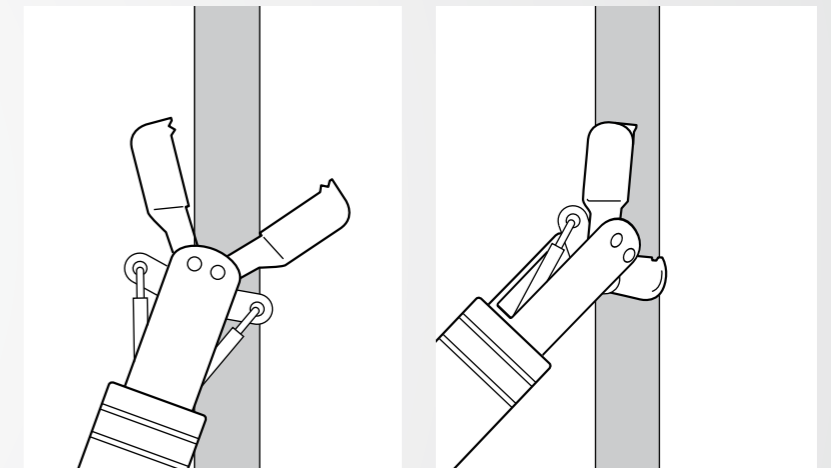
How to use it?

No traction is needed



With bipolar, there is no need for traction since the current is generated only between the cups of the forceps. Therefore, the only focus is on finding a bleeding point, grasping, and energizing. Bipolar has the merit of creating less burn and tissue damage.

Works with cups open so no alignment is required



The HemoStat WideCup doesn't have a rotating function because bipolar doesn't need traction.

Even in a situation that the cups are located vertically against the blood vessels without grasping at all, coagulation is possible with a light touch and energizing while keeping that position.



HemoStat WideCup: Testimonials



“In my unit, we switched completely from monopolar to bipolar when it comes to hemostatic forceps. I am very pleased with the way it works and the ability you have to deliver the amount of energy you want to a vessel near the muscle layer with a very reliable and predictable effect.”

Dr. Arjun Koch
Erasmus MC, Rotterdam



“I feel confident in using the bipolar forceps, particularly in the colon as the thermal spread is minimal and the coagulation is excellent with good hemostasis. It is just as efficient as any monopolar product with excellent results. ”

Dr. Aryn Haji
King's College Hospital, London



“In my opinion, HemoStat Widecup is an indispensable device for endoscopists performing complex ESD and EMR. I don't start an ESD without my HemoStat. I always hope not to use it, but if I get arterial bleeding, only HemoStat Widecup ensures I won't pierce the intestinal wall. HemoStat gives me confidence in coagulating and cutting a large submucosal vessel and treating the protruding vessels of the dissection bed for a prophylactic hemostatic purpose.”

Dr. Giancarla Fiori
IEO Hospital, Milan



HemoStat WideCup: Testimonials



“Hemostat enables good and easy control of bleeding during ESD. Its bipolar current allows safe coagulation, as it has less chance of deeper tissue thermal damage and lower risk of perforation.”

Dr. Alfredo Mata
Hospital de Sant Joan Despí Moisès Broggi,
Barcelona



“Easy to handle and excellent coagulation results with less carbonization. The size is really good (open 5,8mm) for bigger bleedings and the price is competitive.”

Dr. Markus Dollhopf
Klinik Neuperlach, Munich



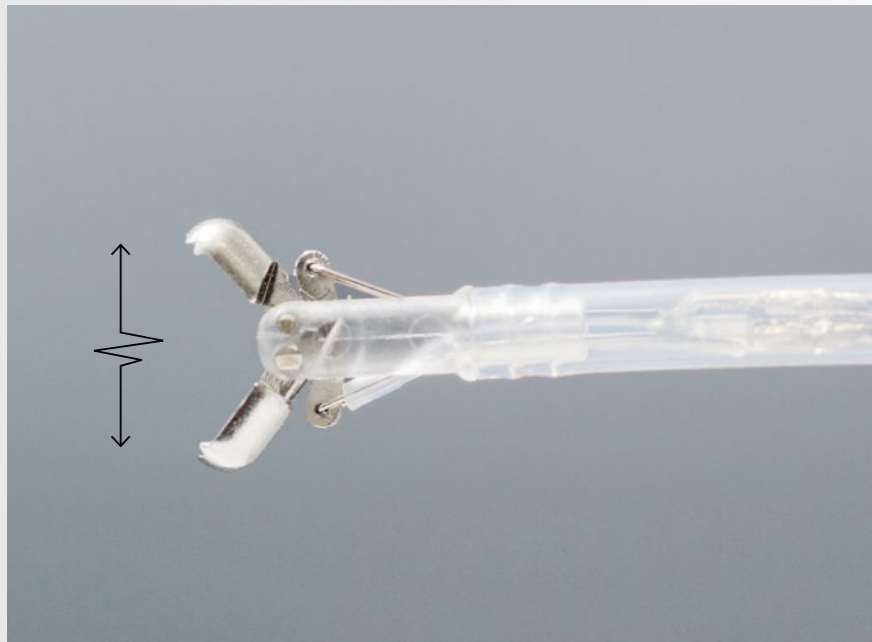
“The HemoStat WideCup is the preferred choice for hemostasis, especially in advanced procedures such as EMR and ESD. It combines the usefulness of coagulation forceps with the safety of a bipolar device, all at a very competitive price.”

Dr. Michael Häfner



HemoStat WideCup: Common settings

For the most common cases, the below settings are used. Please always keep in mind the patient's condition and the specific circumstances of the case.



| Generator | Generator | Mode | Setting |
|----------------|-------------------|---------------------------|-------------------|
| PENTAX Medical | ENDO ARC | Bipolar Standard | 20 W |
| BOWA | ARC 250 | Bipolar Standard | 20 W |
| BOWA | ARC 400 | Bipolar Laparoscopy Micro | 20 W |
| ERBE | VIO 3 | softCOAG bipolar | Effect 2,6 |
| ERBE | ICC200 | Bipolar | 30 W |
| ERBE | VIO 200/300 (D/S) | Bipolar Soft | Effect 3, 20~30 W |
| Olympus | ESG-300 | SoftCoag | Effect 3, 50 W |



HemoStat WideCup: Specifications



| | Type | Working Length [mm] | Min. Channel [mm] | Max. Insertion Portion Width [mm] | Cup Opening [mm] |
|-------------------|----------|---------------------|-------------------|-----------------------------------|------------------|
| HemoStat WideCup* | HS-D2618 | 1,800 | 2.8 | 2.6 | 5.8 |
| | HS-D2622 | 2,200 | 2.8 | 2.6 | 5.8 |

* Equipped with active cord and plug

HemoStat WideCup: **Bipolar adaptors**

The HemoStat WideCup can be used in conjunction with an electrosurgical generator that has a bipolar output terminal compatible with a pitch of two electrodes with a 22 mm width.

The following adaptors are available when direct bipolar connection is not possible:



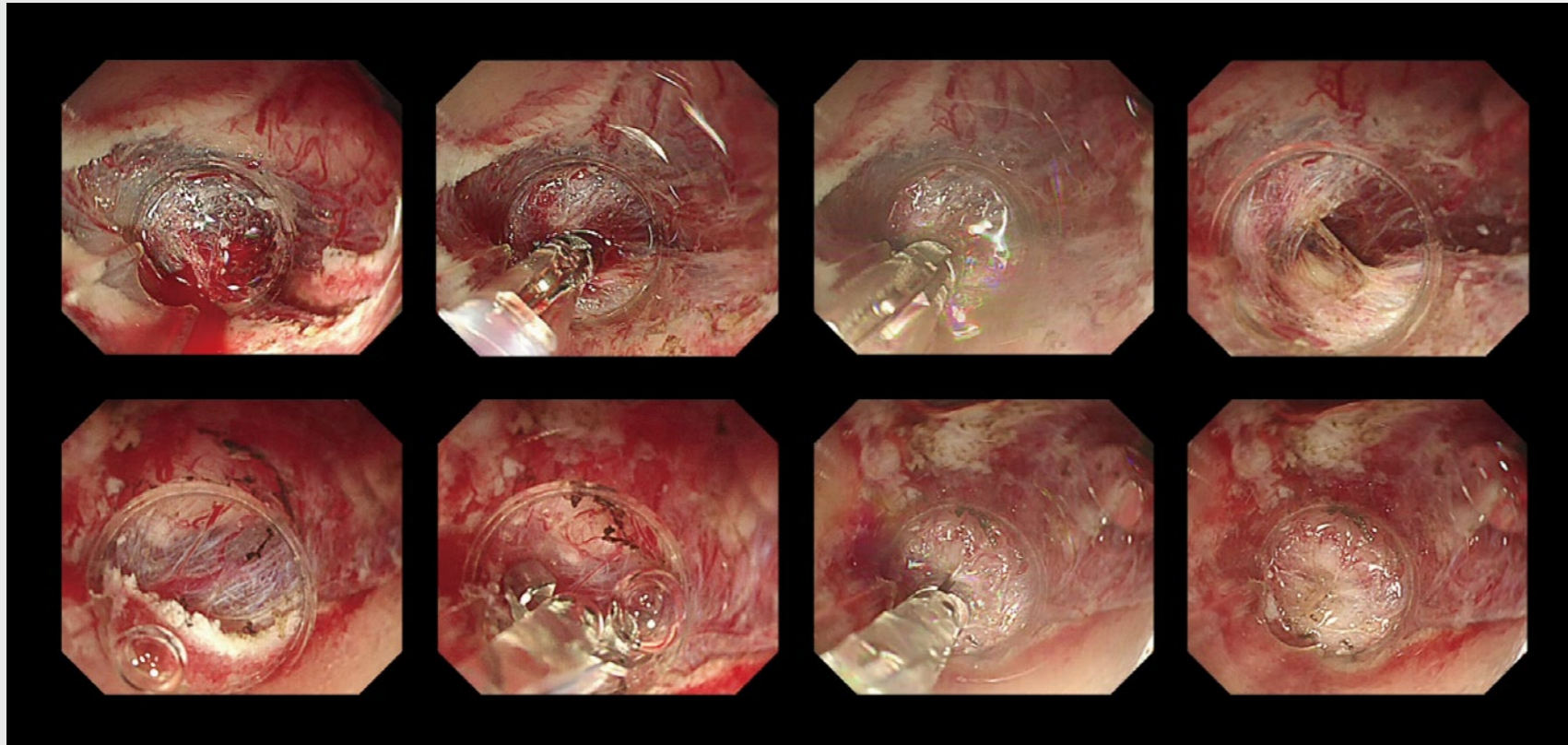
Bipolar adaptor (ref. 901-215) for HemoStat WideCup to be used in combination with ENDO ARC (PENTAX Medical) and ARC 250 (BOWA).



To connect the HemoStat WideCup with ERBE, high frequency generators without a two pin socket, use the adaptor reference 20183-066 from ERBE.

HemoStat WideCup: GI applications

DUODENUM



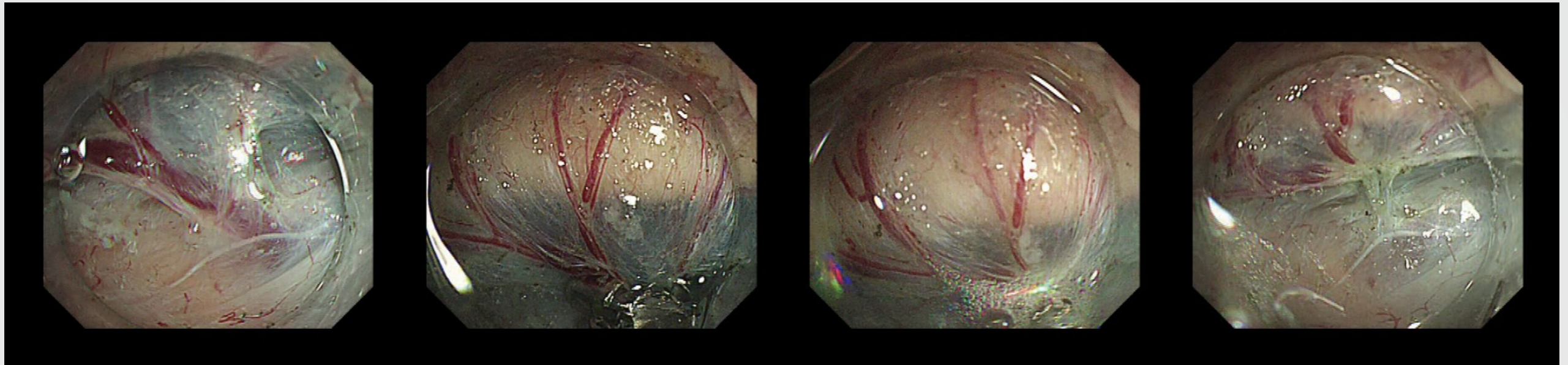
Dr. Naohisa Yahagi
Oncology Center, School of Medicine,
Centers for Interdisciplinary Care
Keio, Japan

The patient had a flat lesion in the duodenum. Though it was benign, it had grown and considering the future risk, we decide to resect. We cut the submucosal layer, find out the bleeding point, grasp if we can, and if bleeding is stopped, we energize slightly. We see a small blood vessel here, too. When using a monopolar device, the muscle layer is torn easily when coagulating such small vessels, therefore the endoscopist wants to keep away from them. On the contrary, bipolar can only burn where touched, so we can do as much as is needed.



HemoStat WideCup: GI applications

STOMACH



In the picture, thick blood vessels and arteries are visible. You can see a vein in the front but must grasp, not pull it with a forceps. Because the cup is flat if you pull, as with a monopolar, it can slip out. If the orientation of the cup is wrong, you can coagulate easily by energizing for about two seconds while pushing it in the open position.

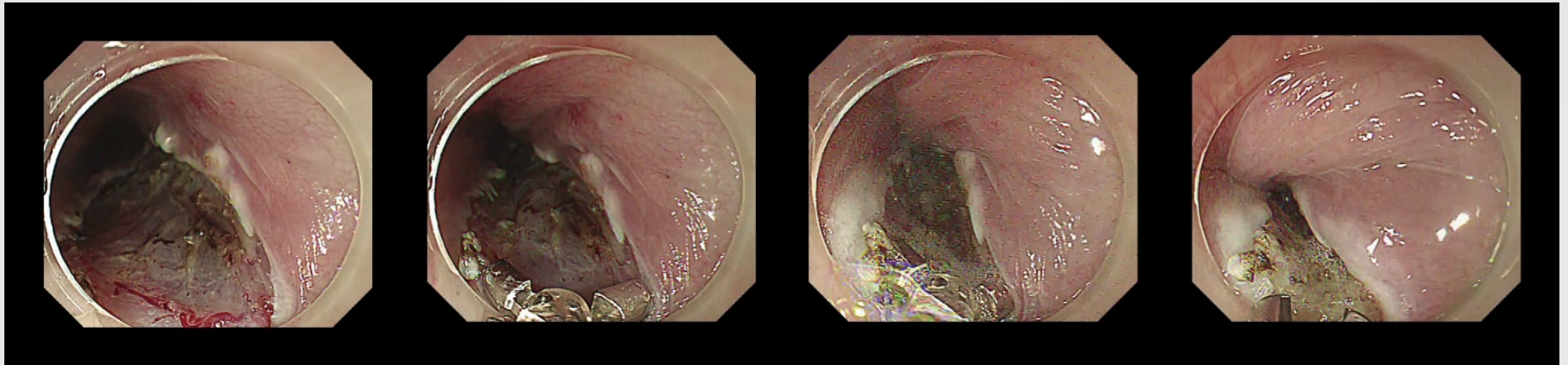
Dr. Naohisa Yahagi

Oncology Center, School of Medicine,
Centers for Interdisciplinary Care
Keio, Japan



HemoStat WideCup: GI applications

ESOPHAGUS



Do not press it strongly, if you just energize with a light touch, you can coagulate very cleanly. With a monopolar device, it can cause difficulty if the tissue or vessel is not grabbed, and in the case of contact coagulation, it is necessary to grasp the tissue or vessel pinpoint. However, with WideCup, coagulation can be done by approaching with open cups. It is important that you first set the appropriate generators' setting for WideCup; a high setting is unnecessary. Then, recognize the bleeding point reliably and grasp the blood vessel if possible. If you cannot, simply use the open cups to touch with slight pressure and apply the electric power with a flat cup. In any case, we recommend energizing the tissue without traction.

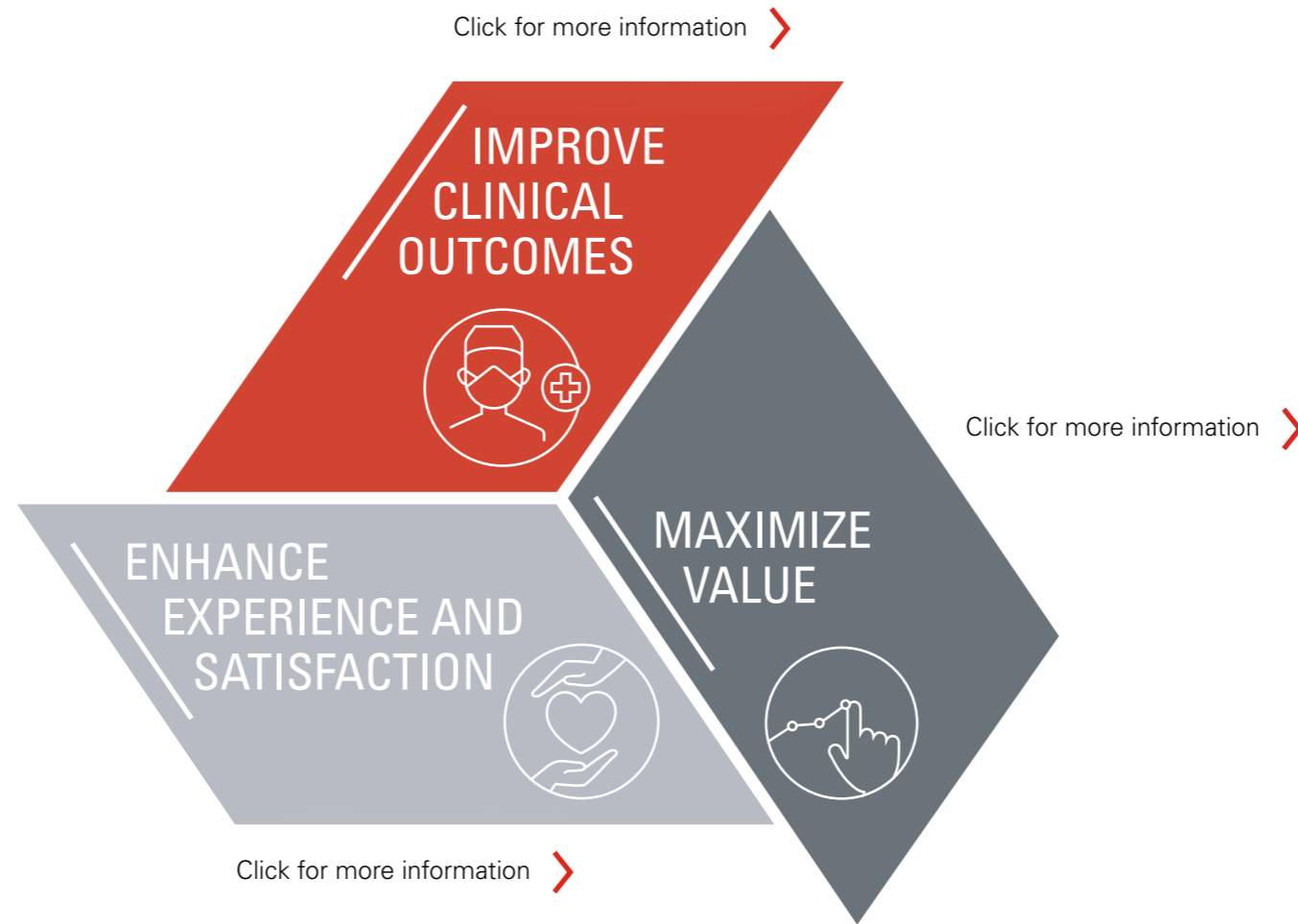
Dr. Naohisa Yahagi
Oncology Center, School of Medicine,
Centers for Interdisciplinary Care
Keio, Japan



PENTAX Medical's Triple Aim

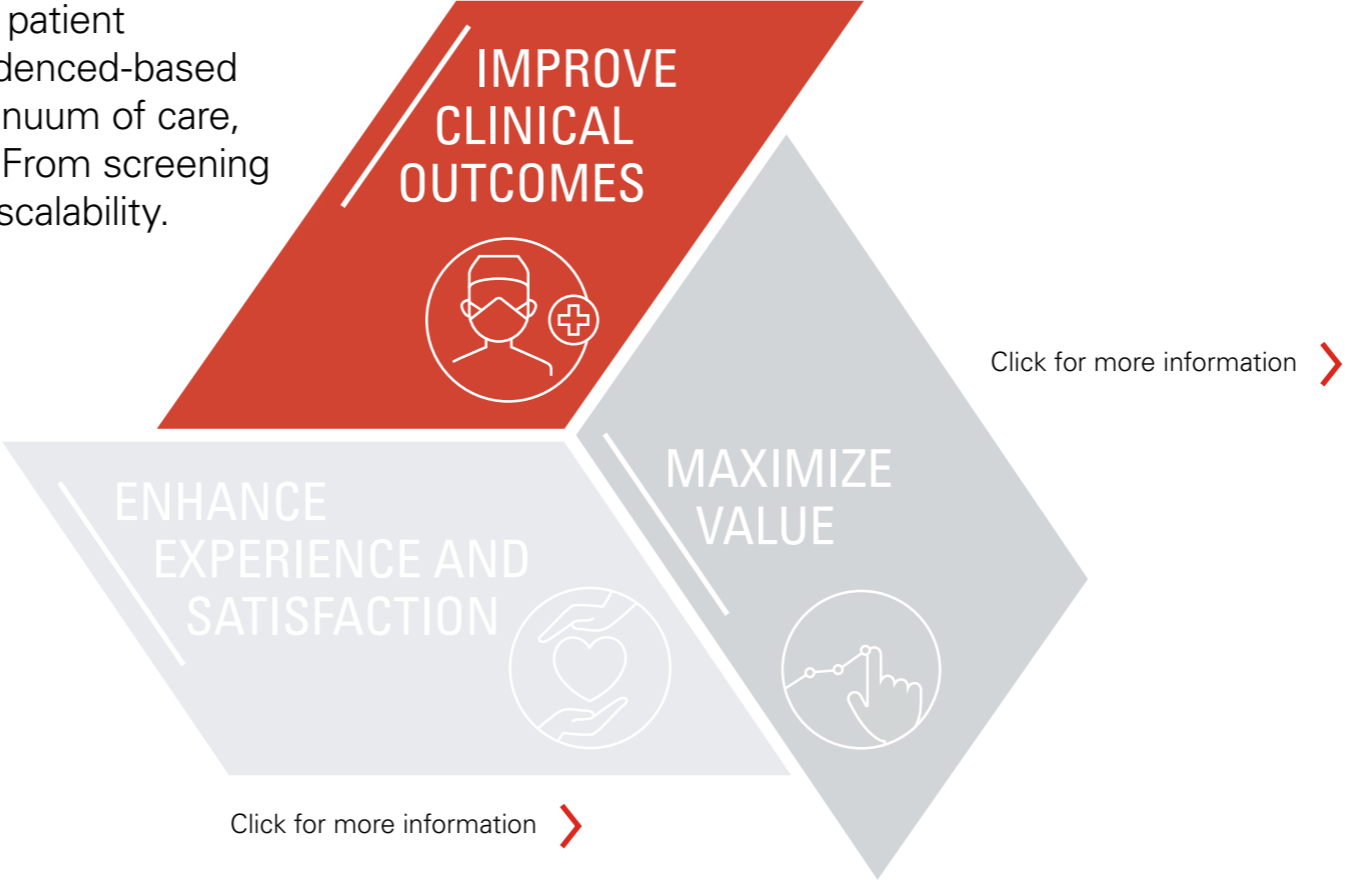
Our **Triple Aim** program is designed to deliver on our commitment to support you and your healthcare organization's wider objectives by providing programs, products, and solutions to help you reach your goals.

FIND OUT
HOW THE
HemoStat WideCup
SUPPORTS
TRIPLE AIM



PENTAX Medical's Triple Aim

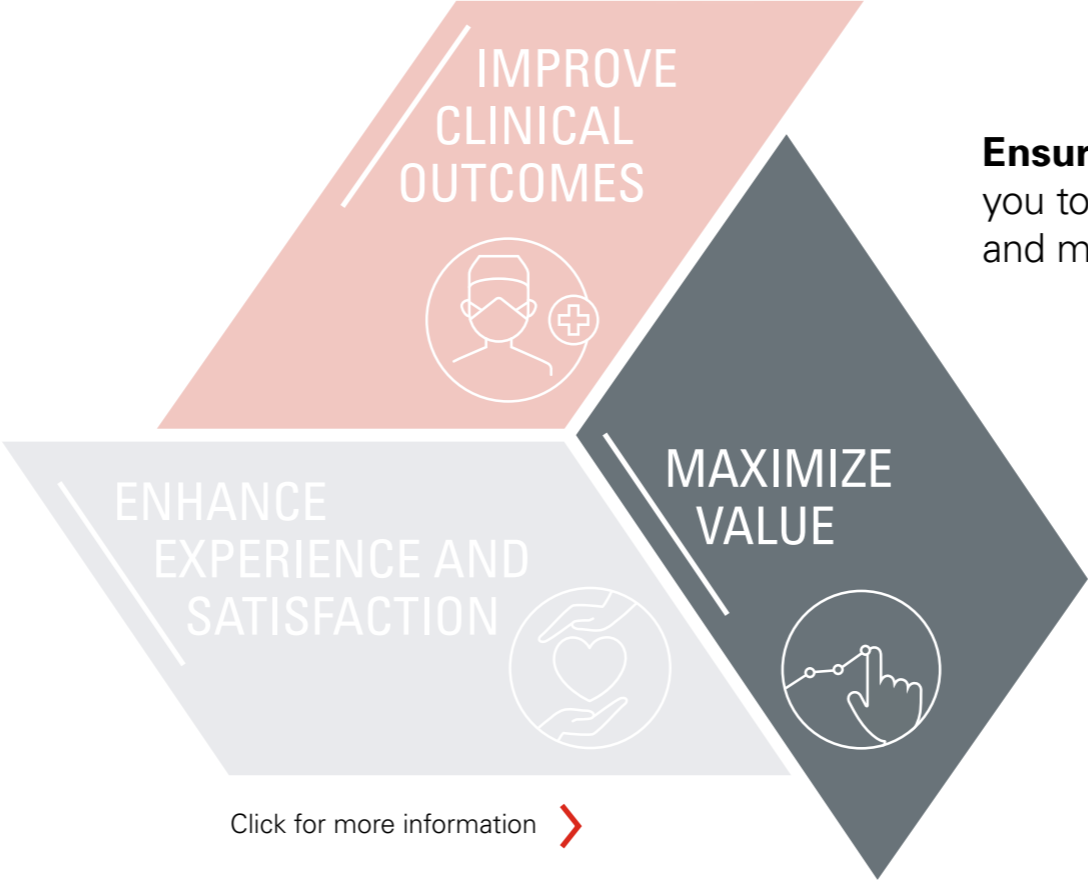
Enabling you to improve patient outcomes by offering evidenced-based solutions across the continuum of care, dedicated to your needs. From screening through therapy with full scalability.



FIND OUT HOW THE **HemoStat WideCup** SUPPORTS TRIPLE AIM

PENTAX Medical's Triple Aim

Click for more information >



Ensuring value by enabling you to improve your efficiency and minimize healthcare costs.

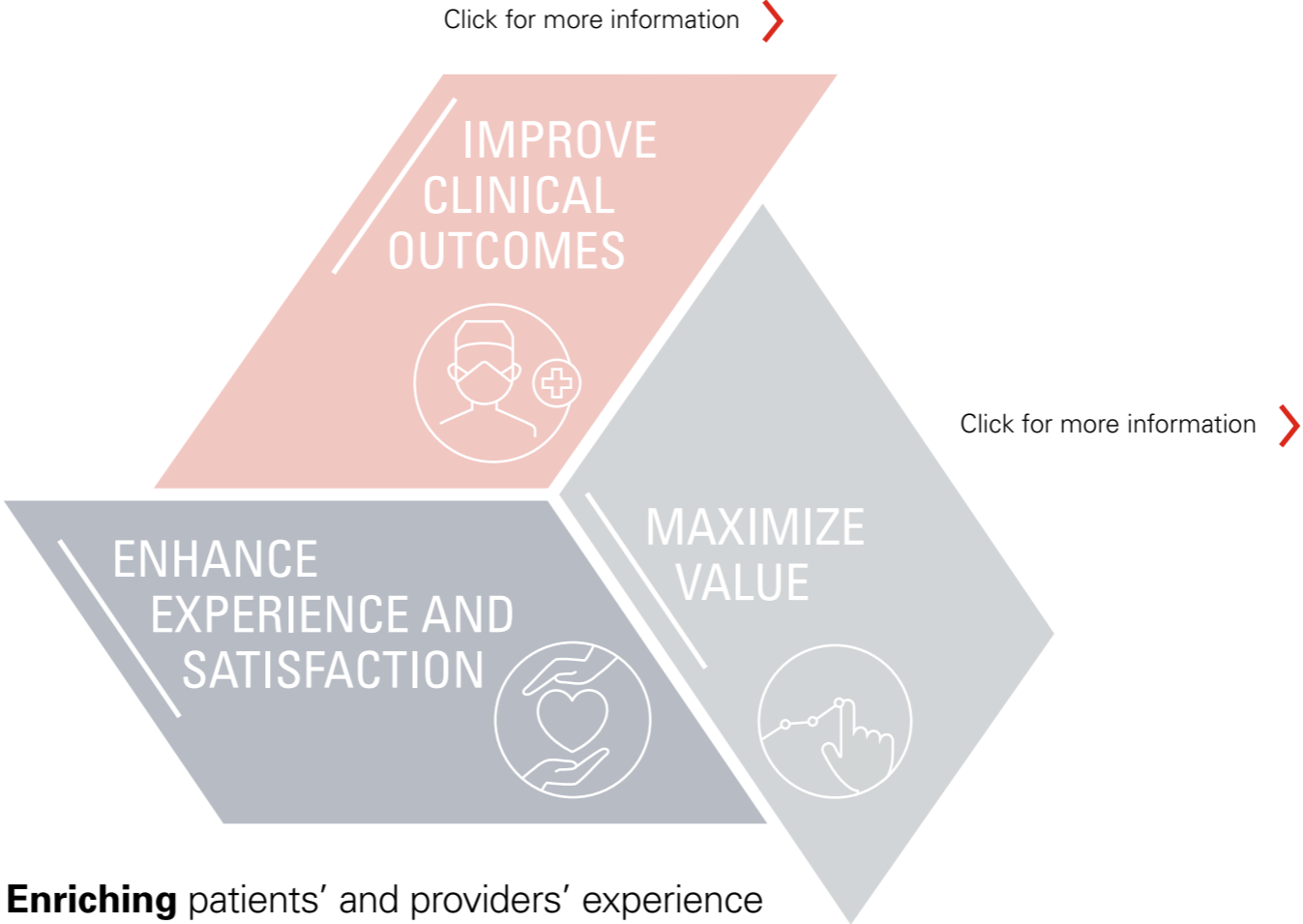
Click for more information >

FIND OUT HOW THE **HemoStat WideCup** SUPPORTS TRIPLE AIM

PENTAX Medical's Triple Aim



FIND OUT HOW THE **HemoStat WideCup** SUPPORTS TRIPLE AIM



Enriching patients' and providers' experience by empowering every member of your care team to achieve optimal outcomes through products, education, and support.

www.training-for-excellence.eu

Your needs shape our service

PROXIMITY WITH MULTILEVEL EXPERTISE

- 150+ Technicians across Europe
- Regional and local repair centers
- Service engineers for maintenance
- 360 Days a year repair center
- 43 Service partner and certified repair center
- Multilingual customer service

TRANSPARENCY AND PREDICTABILITY

- 2000+ Up to date loaner fleet
- 24/7 Information available and online traceability
- 15 days average repair time
- Service KPI reports

MAXIMIZE VALUE

- Hygiene and application personalized support
- On-site training with application specialists
- Flexible contract options
- Original spare parts

IMPROVE CLINICAL OUTCOMES
ENHANCE EXPERIENCE AND SATISFACTION
MAXIMIZE VALUE

For PENTAX Medical Service, our partnership means your success.

**EC REP EMEA Headquarter
Germany**

PENTAX Europe GmbH

Julius-Vosseler-Straße 104 . 22527 Hamburg

Tel.: +49 40 / 5 61 92 - 0 . Fax: +49 40 / 5 60 42 13

E-mail: info.emea@pentaxmedical.com

www.pentaxmedical.com

TÜV Süd CE0123 • Medical device class: IIb • This product must be used only by healthcare professionals. Before use and for detailed product specifications, please refer to the instructions for use. In the interest of technical process, specifications may change without notice.

PENTAX
MEDICAL
Excellence in Focus