

BROADEN YOUR PERSPECTIVE

The EUS-J10
line-up

The new way of doing. The new way of seeing.
The new way of treating. Explore the EUS-J10 line-up.

The new
way of ...

Our Hygiene
Commitment

The complete
solution

Triple Aim



Broaden your perspective. Explore the EUS-J10 line-up.

The EUS-J10 line-up

The new way of doing. The new way of seeing. The new way of treating.
The EUS-J10 line-up is **designed for optimized procedural efficiency** during diagnostic EUS, EUS-FNA/FNB, and therapy.

The new way of ...

Our Hygiene Commitment

The complete solution

Triple Aim



EG36-J10UR



EG34-J10U



EG38-J10UT

PENTAX Medical and Ultrasound Scanner:



Leveraging strong synergies for the best clinical outcomes

The EUS-J10 line-up

The new way of ...

Our Hygiene Commitment

The complete solution

Triple Aim

Outstanding image quality

Clear ultrasound and endoscopic images result in improved sensitivity for diagnosis.

Advanced imaging modalities

Advanced imaging modalities contribute additional diagnostic information.

Portfolio of ultrasound systems

The largest range of EBUS/EUS compatible ultrasound systems – from budget class to high specialization.

Customization and image optimization

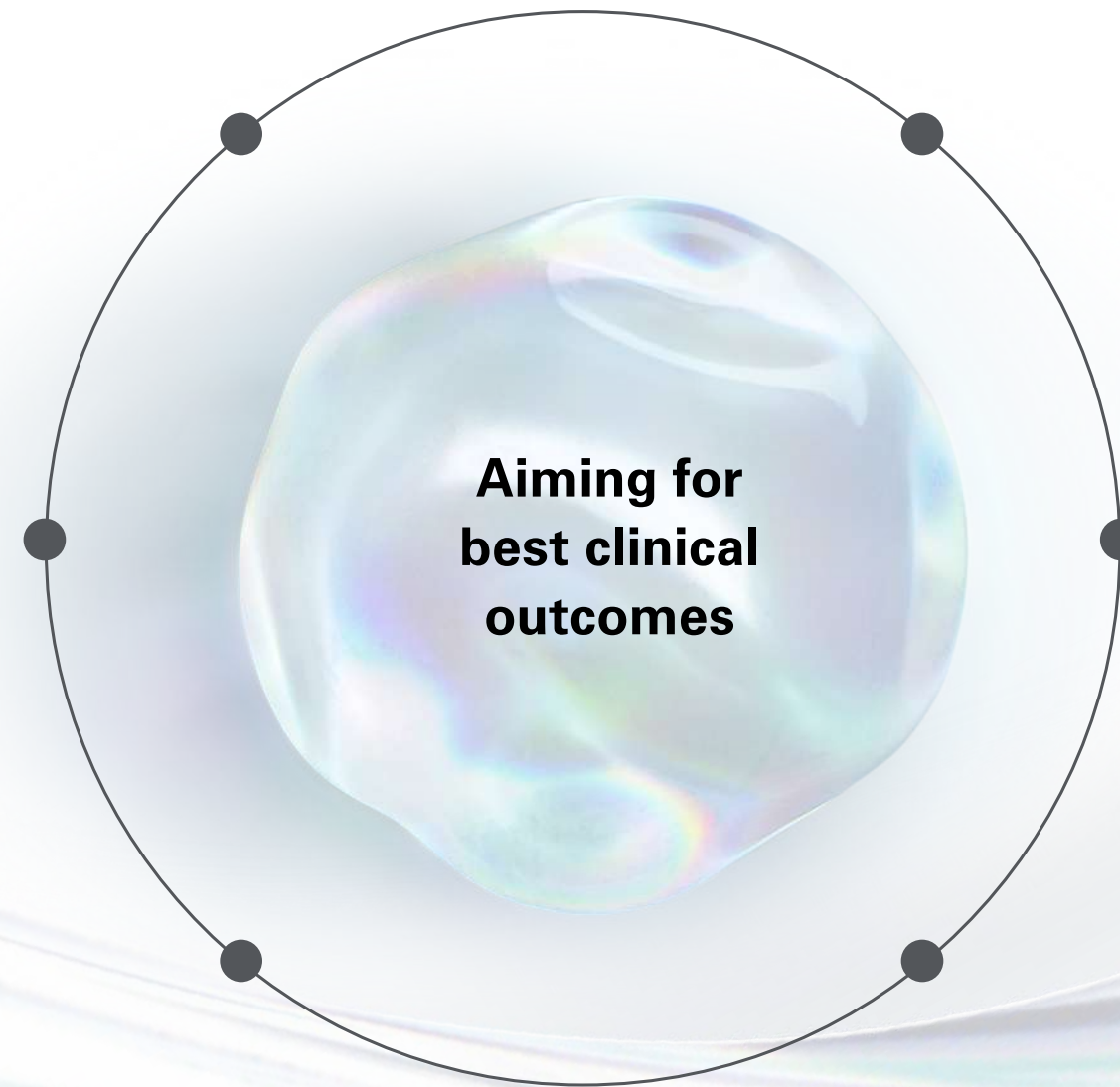
Image settings can be optimized for each individual user in real-time on-site.

Complementary ultrasound transducers

A wide range of ultrasound transducers extends the application for complementary imaging.

Training and education

Training programs provide the highest standard of professional education across a range of skill levels, from basic to expert.



Broaden your perspective.

Explore the EUS-J10 line-up.

PENTAX Medical always has Triple Aim in mind when providing solutions to you, in order to support your goals of improving clinical outcomes, improving healthcare productivity and enhancing provider and patient experience.

The EUS-J10 line-up

The new way of ...

Optimize access

Increased maneuverability and improved ergonomics contribute superb stability and ease of intubation to support higher procedural success rates, optimized working comfort, and better patient tolerance. *The new way of doing.*

[Click for more information](#)

Our Hygiene Commitment

Enrich diagnostic findings

Greater detail, better delineation, and superior penetration: a proven PENTAX Medical image quality enhanced to provide improved diagnostic outcomes, and guidance on therapy. *The new way of seeing.*

[Click for more information](#)

The complete solution

Redefine therapy

A unique, enlarged 4.0 mm working channel expands therapeutic capabilities to advance EUS-guided intervention while providing full control of the procedure. *The new way of treating patients.*

[Click for more information](#)

Triple Aim

Optimize access.

The new way of doing.



Supports higher procedural success rates, optimized working comfort, and better patient tolerance through increased maneuverability:



Optimize access. The new way of doing.

Supports higher procedural success rates, optimized working comfort, and better patient tolerance through improved ergonomics and lightweight control body:



Ergonomically designed control knobs

One umbilical cable to reduce stress injury and keep better balance

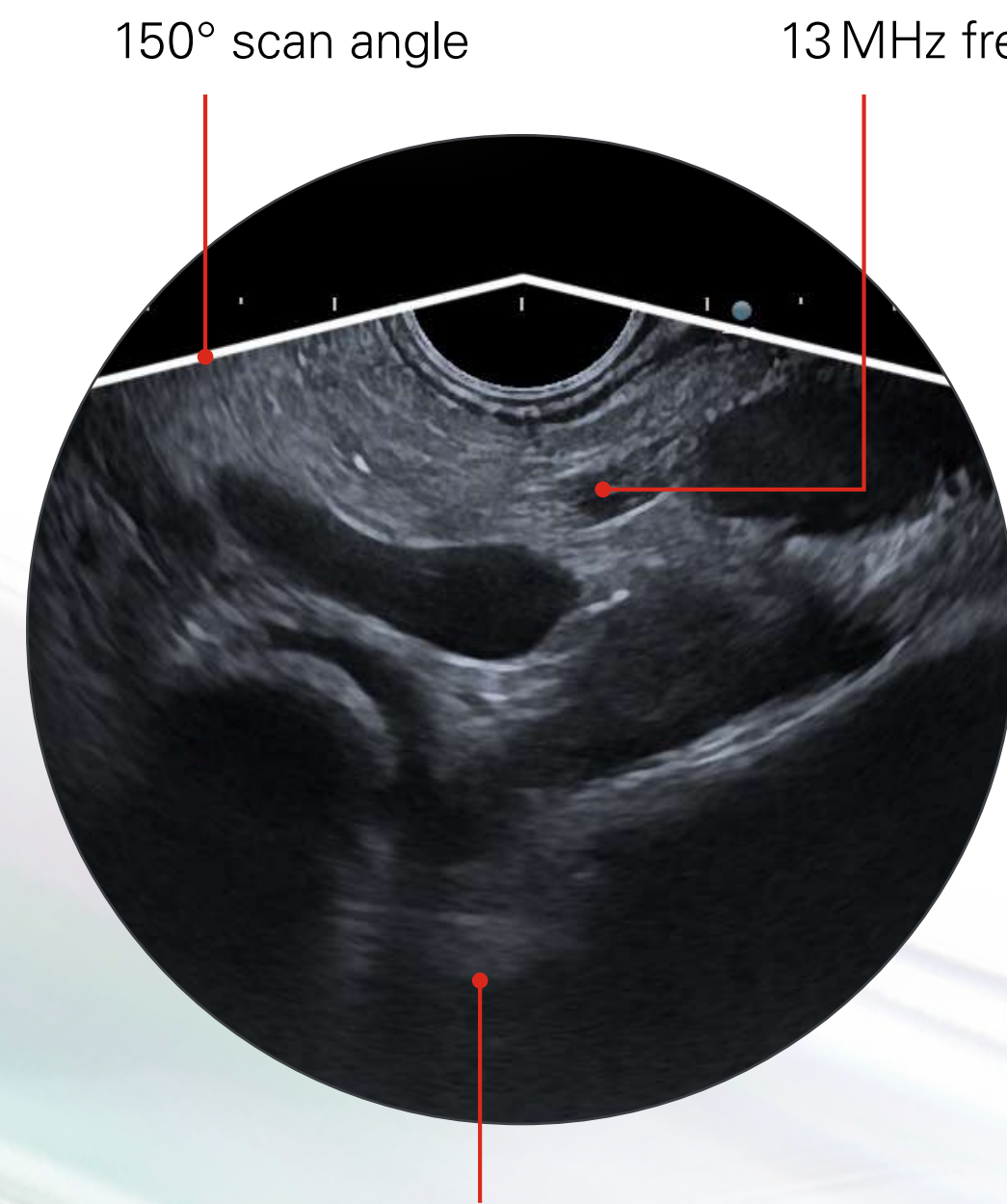
New braking mechanism for better device control

Air/water nozzle to maintain good endoscopic view

Newly designed for optimized handling:
- Air/water/balloon feeding valve OF-B207
- Suction/balloon suction control valve OF-B206

Enrich diagnostic findings. The new way of seeing.

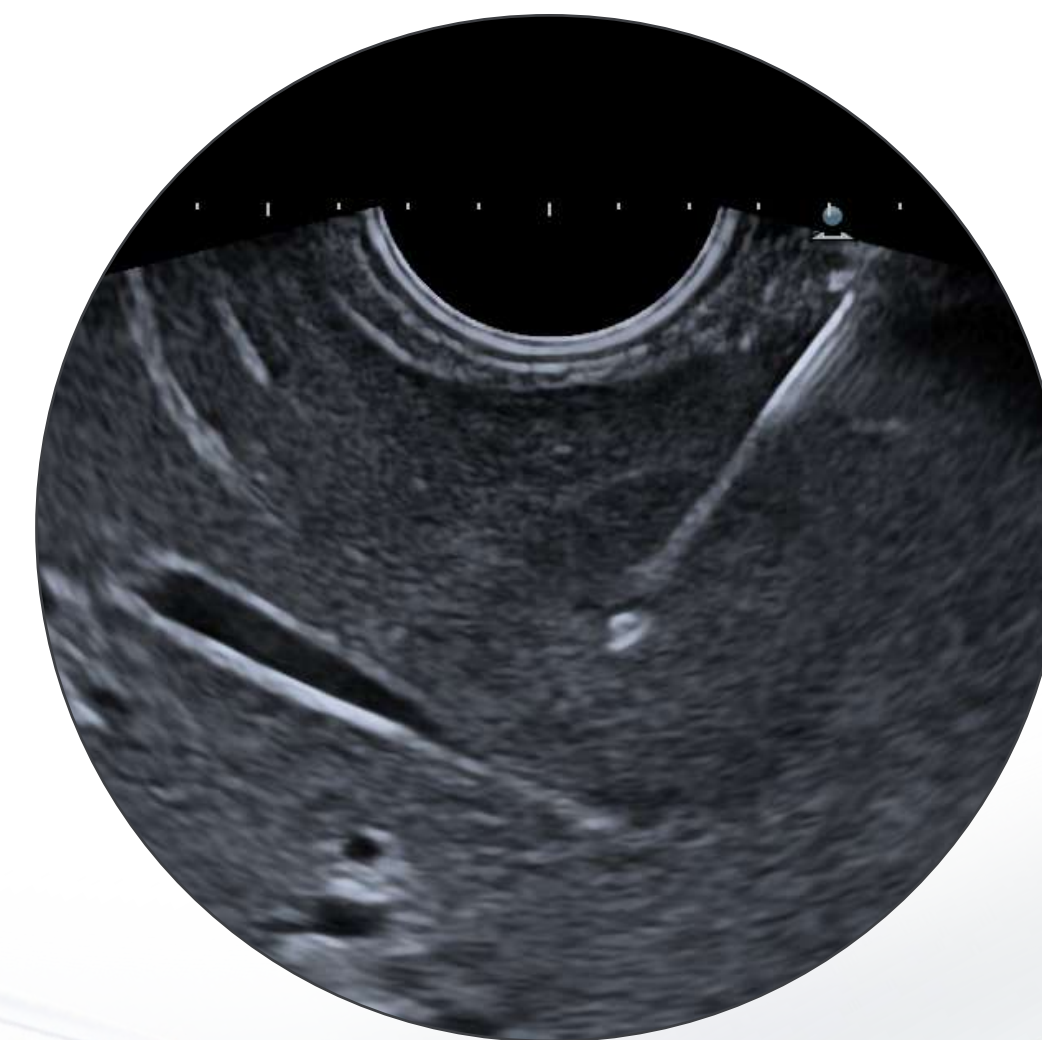
Improved diagnostic outcomes, and guidance on therapy thanks to greater detail, better delineation and superior penetration:



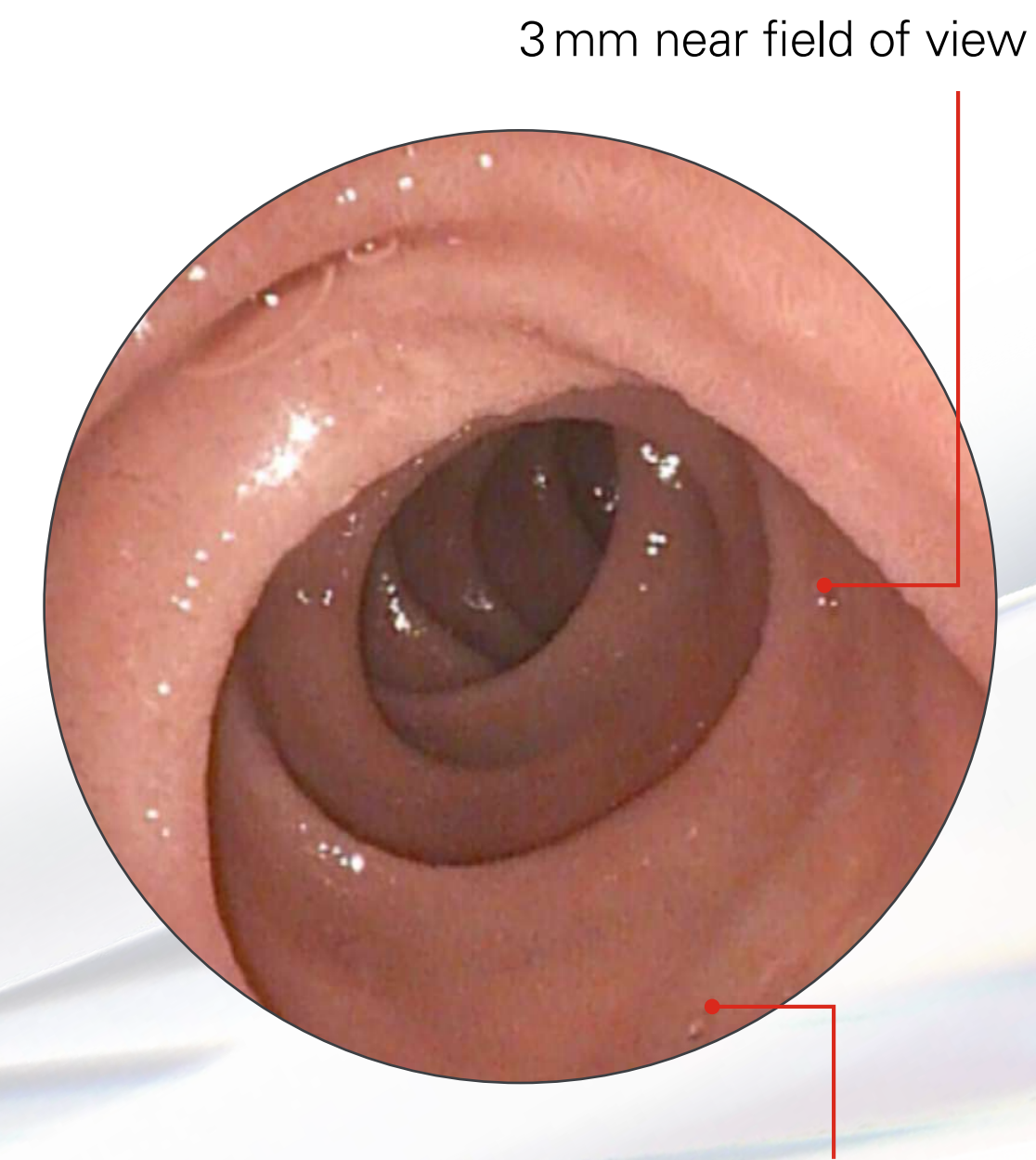
150° scan angle

13MHz frequency

Improved spatial and contrast resolution together with depth penetration due to the latest ultrasound probe crystal technology



EUS-FNA/FNB with clear needle visibility



3mm near field of view

Improved resolution due to new image sensor

All ultrasound pictures on pages 7, 8 and 9 are obtained with an Arietta V70.

Enrich diagnostic findings.

The new way of seeing.

Improved diagnostic outcomes, and guidance on therapy thanks to greater detail, better delineation and superior penetration:



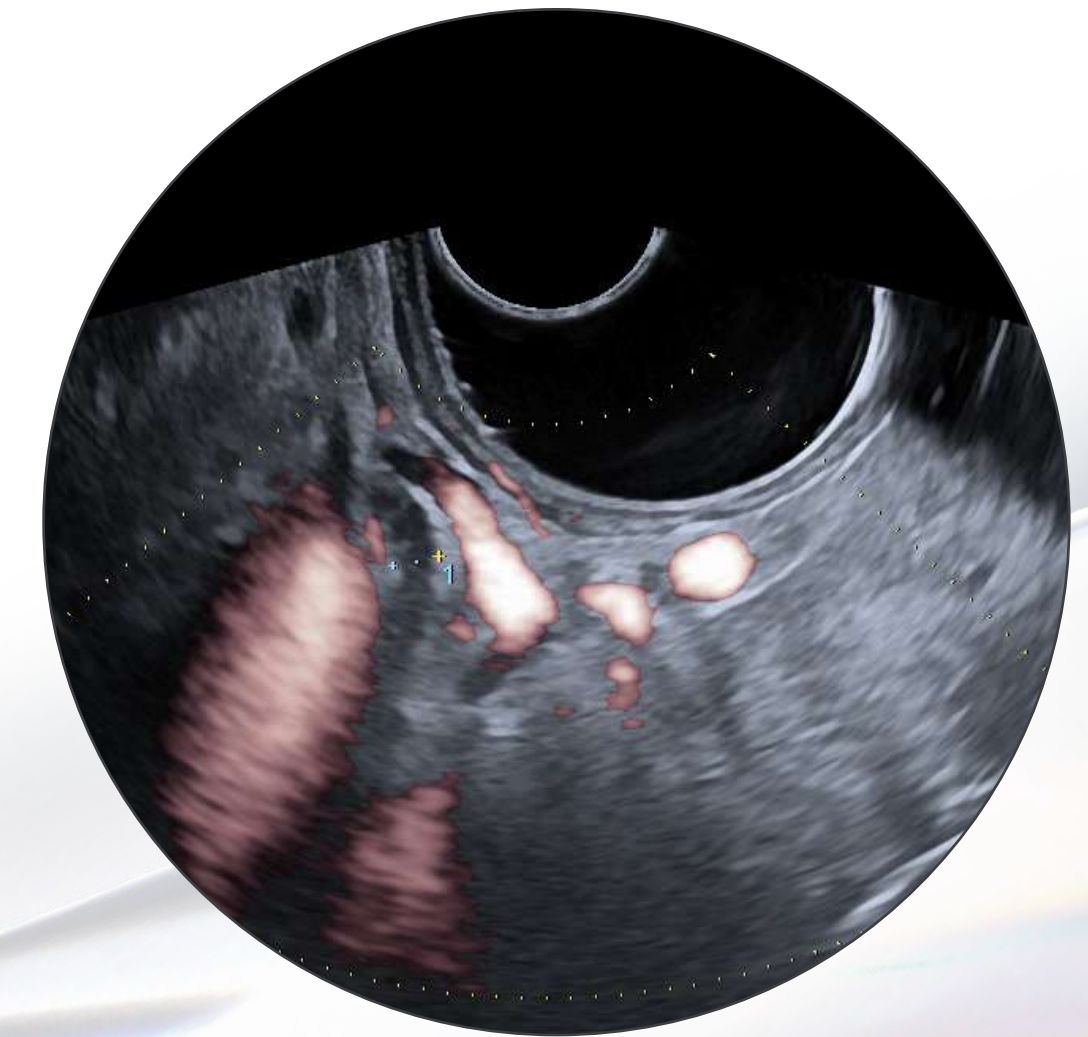
Broadband Harmonic Imaging

Optimal tissue differentiation with clear delineation of boundaries



Compound Imaging

Improves image resolution with clear visualization of irregular borders, calcifications and enhanced needle visibility



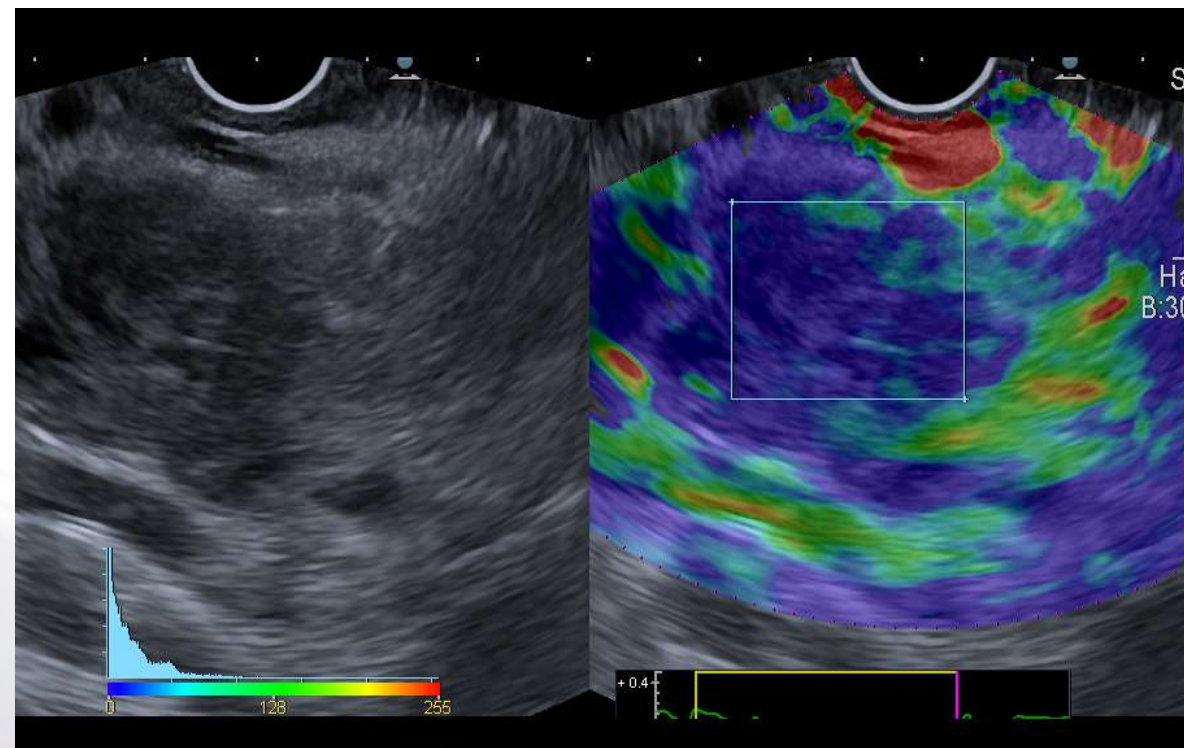
eFLOW

Accurately depicts blood flow dynamics, and helps vessel depiction during challenging EUS-FNA/FNB

Enrich diagnostic findings.

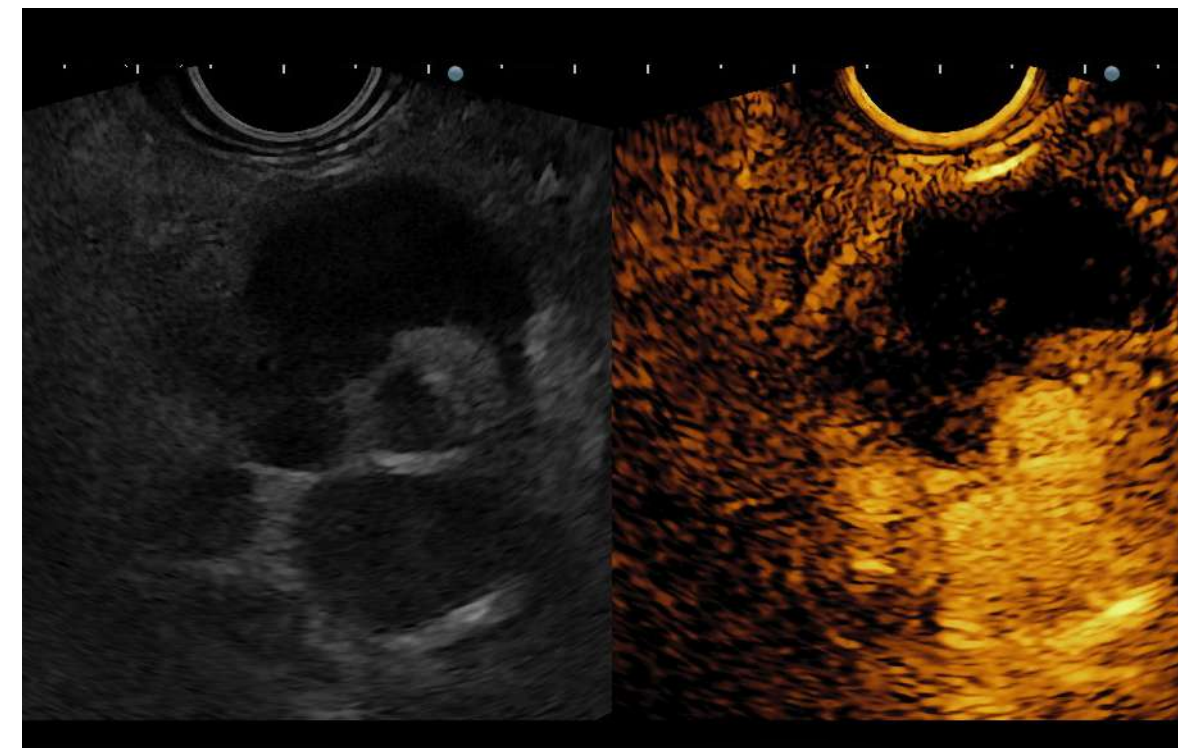
The new way of seeing.

Improved diagnostic outcomes, and guidance on therapy thanks to greater detail, better delineation and superior penetration:



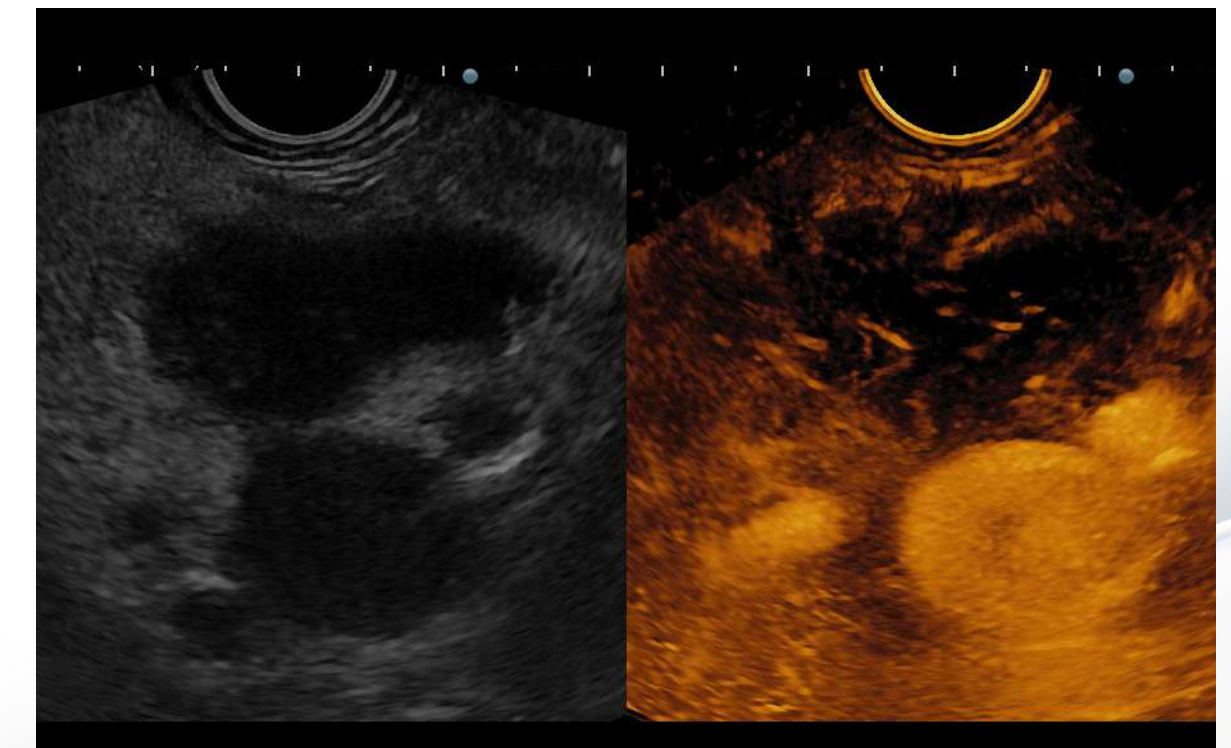
Elastography (RTE)
(Real-Time Tissue Elastography)

Aids characterization of focal lesions, lymph nodes, and improves targeting for EUS-FNA/FNB



Contrast Harmonic Imaging (CHI)
(Real-time display of Contrast Harmonic Imaging)

CHI aids for differential diagnosis of focal lesions (cystic or solid lesions, particularly pancreatic) and monitoring of treatment response



Contrast Harmonic Imaging (CHI)
(Real-time display of Contrast Harmonic Imaging)

Accumulation mode, within CHI, provides information of the target's vascular supply or parenchymal perfusion pattern and enables accurate lesion characterization

Redefine therapy. The new way of treating.



Expanding therapeutic capabilities by enlarged 4.0 mm working channel to advance EUS-guided intervention while providing full control of the procedure:

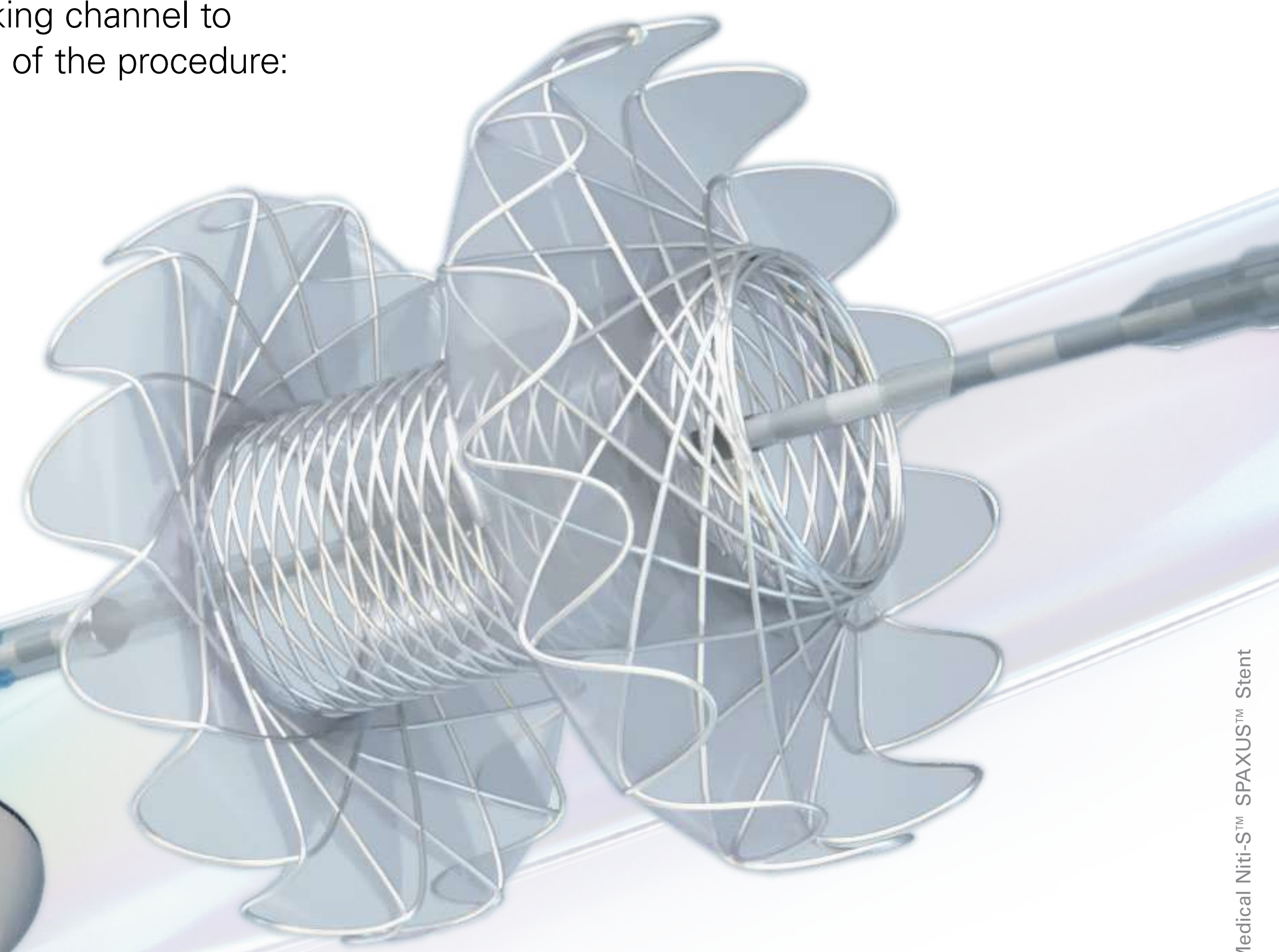


Optimized alignment of endoscopic view with ultrasound probe



A unique, enlarged 4.0 mm working channel

Redesigned elevator shape and optimal elevator movement



PENTAX Medical hygiene commitment

PENTAX Medical is using innovative products, optimizing processes, and integrating feedback from the market to directly tackle patient safety and infection prevention. We work closely with experts for market insights to ensure that all products are directly based on this need.

The EUS-J10 line-up aims to reduce the risk of cross-contamination through endoscope design, validated consumables and optimized reprocessing:

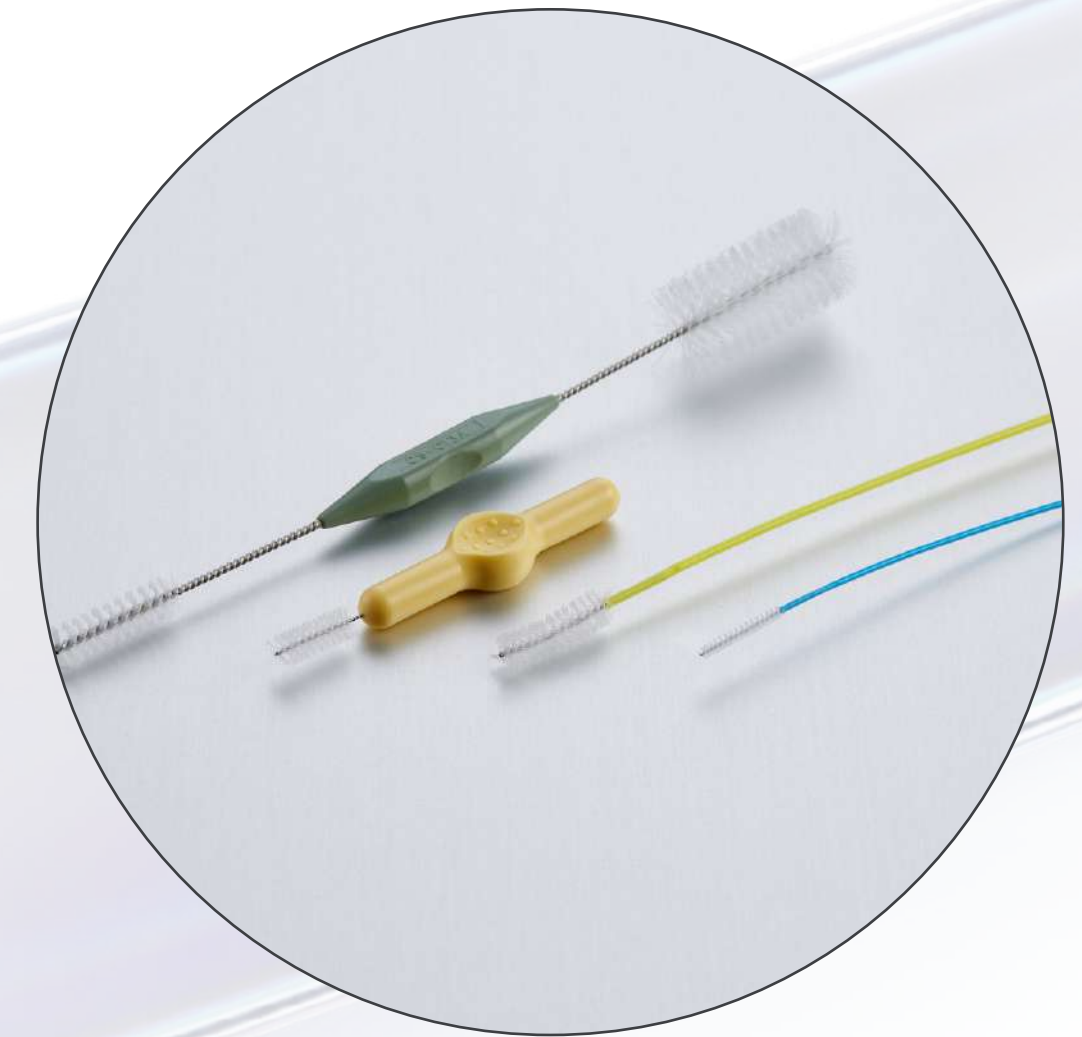


Fewer reprocessing steps due to:

- Sealed elevator wire channel
- Optimized elevator mechanism design



Newly designed **cleaning adapters** separating channels to ensure all channels are adequately reprocessed



- Dedicated **PROFILE single-use cleaning brushes** designed and validated to meet PENTAX Medical quality standards
- Brushable balloon suction channel

Explore the EUS-J10 line-up: The complete solution.

OPTIVISTA plus –
Further improved
in vivo diagnosis for
therapeutic guidance



OPTIVISTA plus⁺
EPK-i7010



ARIETTA 65

ARIETTA 65PX –
Expertly designed to optimize
productivity within compact
mid-range systems

EPK-i5000
video processor –
Operate i-scan quickly
and comfortably



EPK-i5000



ARIETTA 750PX

ARIETTA 750PX –
High-end ultrasound
systems for advanced
performance

DEFINA system –
Flexibility in a new light



DEFINA
EPK-3000



ARIETTA 850PX

ARIETTA 850PX –
The next evolution in
ultrasound, designed for
high expectations

[Click for more information on the video processor](#)

[Click for more information](#)

The legal manufacturer of these ultrasound platforms and non-endoscopic probes is FUJIFILM Healthcare Corporation Japan. They are distributed in the assigned geographical areas in Europe by PENTAX Europe GmbH (on a non-exclusive basis).

ARIETTA 65PX, ARIETTA 750PX, ARIETTA 850PX, eFLOW and Real-Time Tissue Elastography (RTE) are registered trademarks or trademarks of FUJIFILM Healthcare Corporation Ltd., Tokyo, Japan.

Overview details

The EUS-J10
line-up

The new
way of ...

Our Hygiene
Commitment

The complete
solution

Triple Aim



Ultrasound Video Gastrosopes

	EG36-J10UR	EG34-J10U	EG38-J10UT
Direction of view	Forward	Forward oblique (45°)	Forward oblique (45°)
Field of view [°]	140	120	120
Depth of field [mm]	3–100	3–100	3–100
Tip angulation up/down [°]	150/70	160/130	160/130
Tip angulation right/left [°]	70/70	120/120	120/120
Distal end width [mm]	10.4	12.9	14.3
Insertion tube width [mm]	12.1	11.6	12.8
Minimum instrument channel width [mm]	2.4	2.8	4.0
Insertion portion working length [mm]	1,250	1,250	1,250
Total length [mm]	1,566	1,566	1,566
Frequency [MHz]	5–13	5–13	5–13
Scan method	Radial	Convex	Convex
Scan angle [°]	360	150	150

In the interest of technical progress, specifications may change without notice.

Biliopancreatic solution



The PENTAX Medical Ultrasound Video Gastroscope EUS-J10 line-up in combination with ultrasound systems completes our biliopancreatic solution.

[Click for more information on DEC™](#)

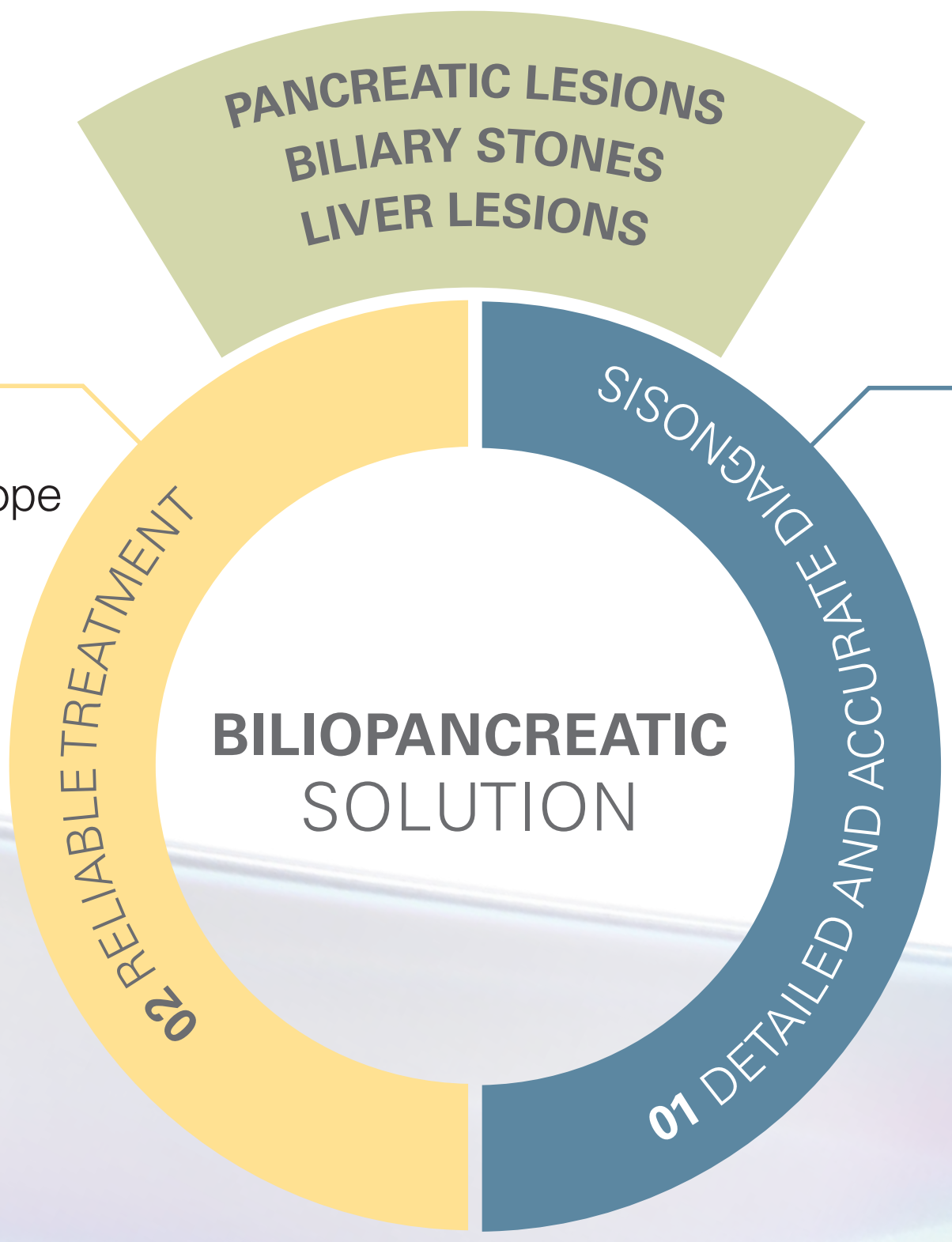
[Click for more information on ENDO ARC & ENDO Plus](#)

[Click for more information on RTE and CHI](#)

[Click for more information on i-scan
www.i-scanimaging.com](#)

EG38-J10UT
Removable Cap Duodenoscope
DEC™ Duodenoscope
ENDO ARC & ENDO Plus

EUS-J10 line-up
RTE *
CHI **
i-scan SE
i-scan OE

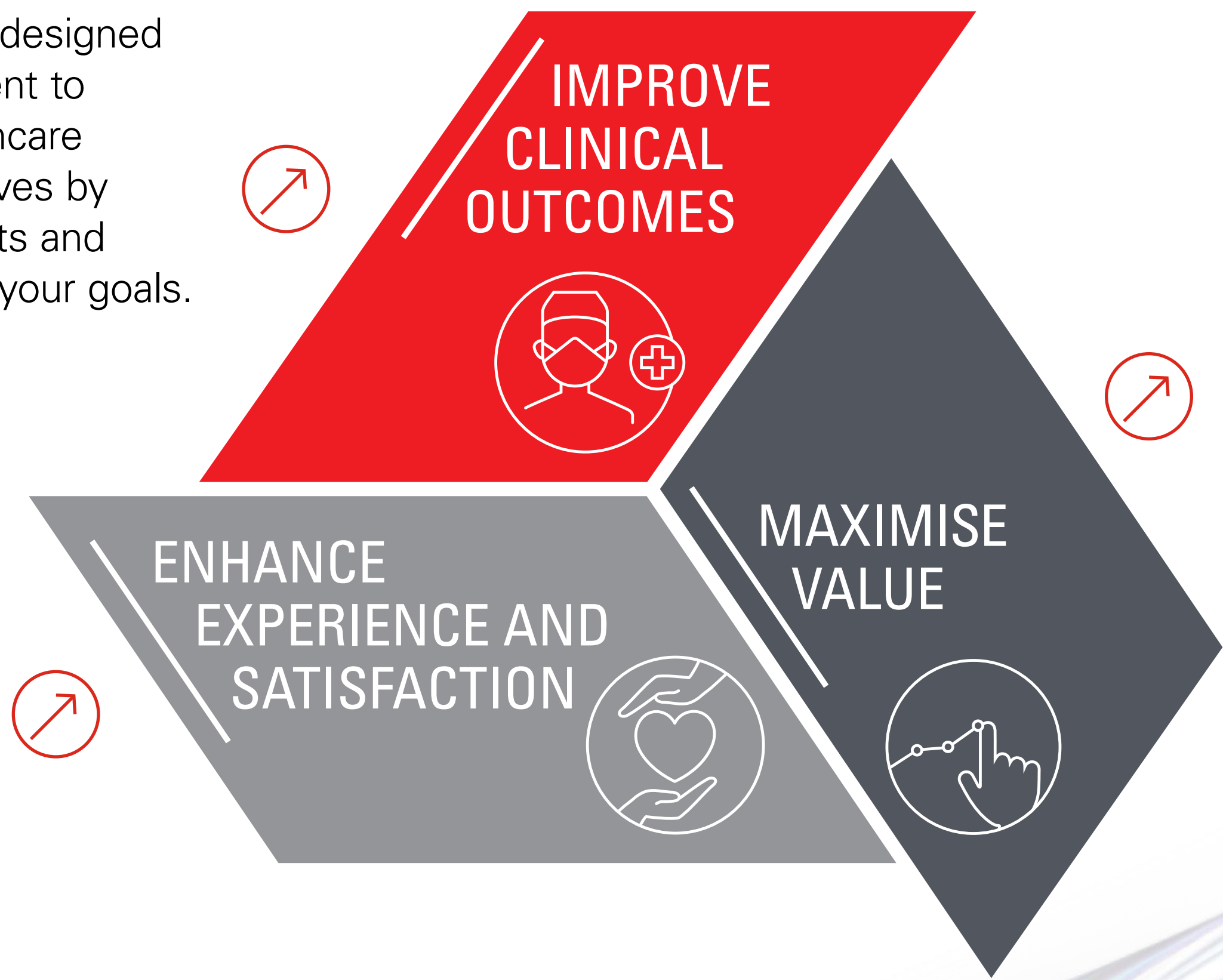


* Real-time Tissue Elastography
** Contrast Harmonic Imaging

PENTAX Medical Triple Aim



Our **Triple Aim** program is designed to deliver on our commitment to support you and your healthcare organisation's wider objectives by providing programs, products and solutions to help you reach your goals.



FIND OUT HOW **THE EUS-J10** LINE-UP SUPPORTS TRIPLE AIM

PENTAX Medical Triple Aim



Enabling you to improve patient outcomes by offering evidence-based solutions across the continuum of care, dedicated to your needs. From screening through therapy with full scalability.



FIND OUT HOW
THE EUS-J10
LINE-UP
SUPPORTS
TRIPLE AIM

PENTAX Medical Triple Aim



Ensuring value by enabling you to improve your efficiency and minimize healthcare costs.

FIND OUT HOW
THE EUS-J10
LINE-UP
SUPPORTS
TRIPLE AIM

PENTAX Medical Triple Aim



FIND OUT HOW
THE EUS-J10
LINE-UP
SUPPORTS
TRIPLE AIM

Enriching patient and provider's experience by empowering every member of your care team to achieve optimal outcomes through products, education and support.



Your needs shape our service

PROXIMITY WITH MULTILEVEL EXPERTISE

50+ PENTAX Medical partners across EMEA

Service Partners network all across Europe, Middle East, and Africa with certified technicians

Multilingual customer service

● PENTAX Medical companies
● PENTAX Medical partners

TRANSPARENCY AND PREDICTABILITY

IMPROVE CLINICAL OUTCOMES

ENHANCE EXPERIENCE AND SATISFACTION

MAXIMIZE VALUE

2000+ Up to date loaner fleet

Information and traceability online

Best-in-time turnaround on repairs

Tailored performance reports

MAXIMIZE VALUE

Hygiene and application personalized support

On-site training with application specialists

Wide contract offering to match customer needs

Original spare parts

For PENTAX Medical Service, our partnership means your success.

Home

The EUS-J10
line-up

The new
way of ...

Our Hygiene
Commitment

The complete
solution

Triple Aim



**EMEA Headquarter
Germany**

PENTAX Europe GmbH
Julius-Vosseler-Straße 104 • 22527 Hamburg
T +49 (0)40 561 92-0 • F +49 (0)40 560 42 13
info.emea@pentaxmedical.com • www.pentaxmedical.com



Manufacturer

HOYA Corporation
6-10-1 Nishi-shinjuku
Shinjuku-ku • Tokyo
160-0023 Japan

CE 0123 Medical devices class IIa. This product must be used only by healthcare professionals. Before use and for detailed product specifications, please refer to the instructions for use. In the interest of technical process, specifications may change without notice.

