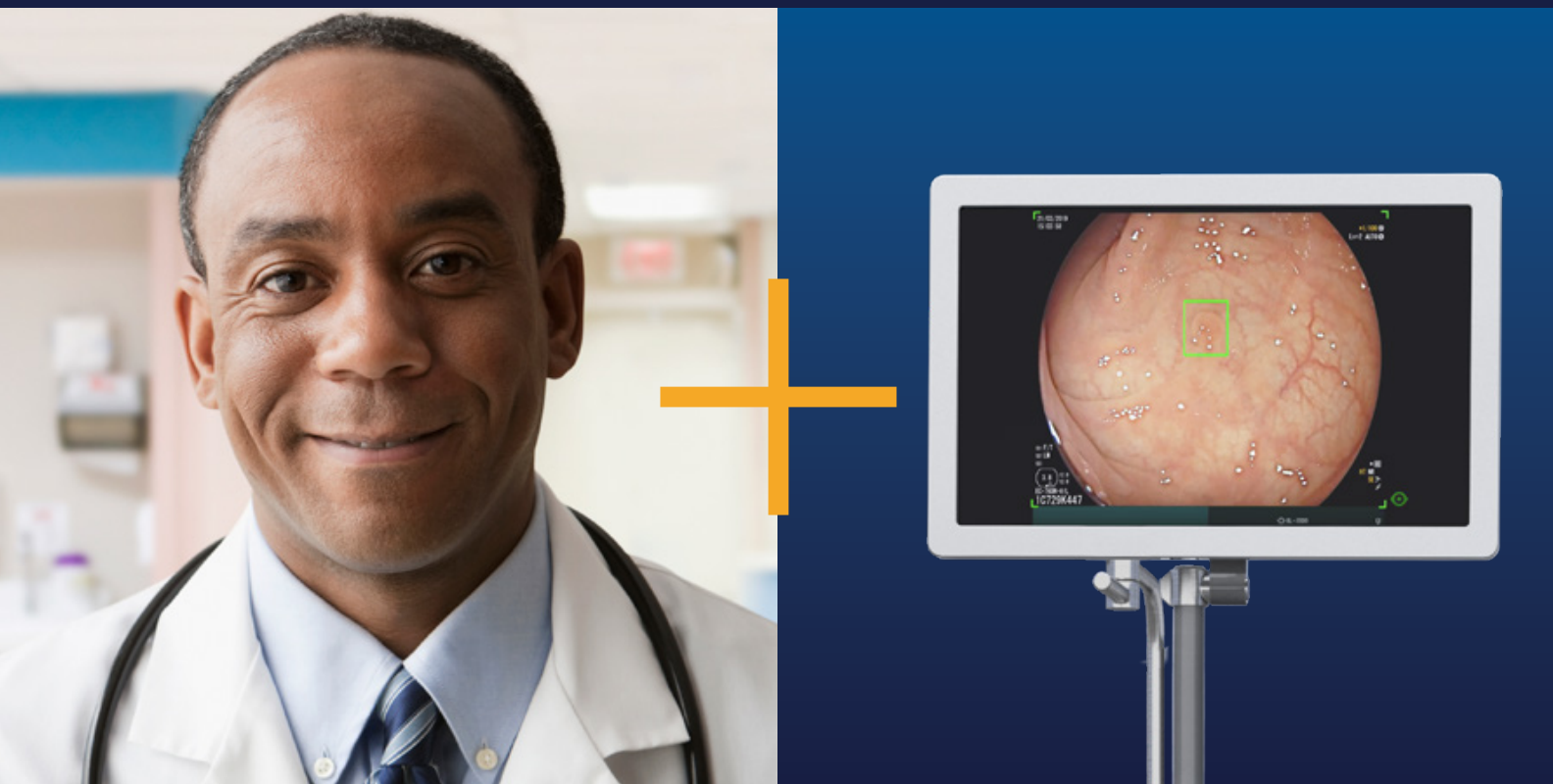
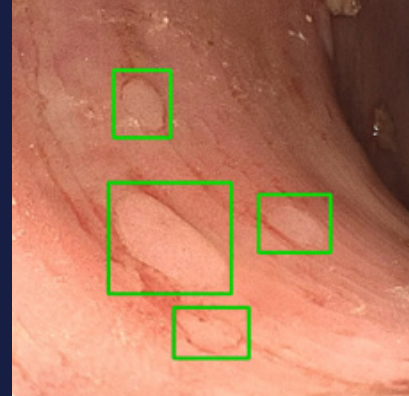


YOU AND AI. THE PERFECT TEAM.



GI Genius™ intelligent endoscopy module

ENHANCING YOUR ABILITY TO DETECT MORE.

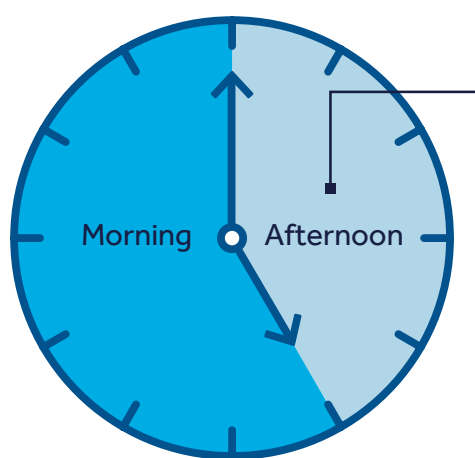


The GI Genius™ intelligent endoscopy module. Enhance your ability to detect colorectal cancer with artificial intelligence.

The GI Genius™ module is designed to seamlessly integrate with your existing colonoscopy equipment and workflow.

It works in real-time, automatically identifying and marking abnormalities consistent with colorectal polyps, including those with flat (non-polypoid) morphology.

From your first case to your last, GI Genius™ is always on.



12,4%
reduction in mean polyps
detected between morning
and afternoon procedures¹

Using start time on a continuous scale, however, each elapsed hour in the day was associated with a 4,6 percent reduction in polyp detection.

References

1. Lee A, Iskander JM, Gupta N, et al. Queue position in the endoscopic schedule impacts effectiveness of colonoscopy. *Am J Gastroenterol.* 2011;106:1457–1465.
2. Repici A, Dinh NN, Cherubini A, et al. Artificial intelligence for colorectal polyp detection: High accuracy and detection anticipation with CB-17-08 performance. *Gastrointest Endosc.* 2019;89(6):AB391–AB392.
3. Clinical Evaluation Report. CB-17-08 System. LQ20052607.
4. Alagappan M, Brown JRG, Mori Y, Berzin TM. Artificial intelligence in gastrointestinal endoscopy: The future is almost here. *World J Gastrointest Endosc.* 2018;10(10):239–249.

Medtronic

IMPORTANT: Please refer to the package insert for complete instructions, contraindications, warnings and precautions.

© 2020 Medtronic. All rights reserved. Medtronic, Medtronic logo and Further, Together are trademarks of Medtronic.™* Third party brands are trademarks of their respective owners. All other brands are trademarks of a Medtronic company. 20-weu-gi-genius-you-and-ai-4731422

[medtronic.com/covidien/uk](https://www.medtronic.com/covidien/uk)

CONSISTENCY

Helps to ensure consistent levels of detection at any time.¹

PRECISION

In a recent analysis comparing the current 2.0 version of GI Genius against the previously published data set in GUT by Hassan et al 2019 GI Genius identified 100% of lesions.^{2,3}

OBJECTIVITY

Highlights regions with visual characteristics consistent with colorectal polyps – including those with flat, (non-polypoid) morphology.³

QUALITY

When integrated into daily practice, AI may offer a reliable, and ever-vigilant second observer.⁴