



EYEMAX

SINGLE-USE VIDEO CHOLANGIOPANCREATICOSCOPY





The top half of the page features a close-up of an endoscopic procedure. A blue and black endoscopic device is inserted into a patient's body, with a white tube extending from it. The background is a light, abstract geometric pattern.

EYEMAX SINGLE-USE VIDEO CHOLANGIOPANCREATICOSCOPY

DIRECT VISUALISATION FOR THE DIAGNOSIS AND TREATMENT IN ENDOSCOPIC SURGERY

- Reliable, low-risk procedure for the diagnosis and treatment of acute or chronic biliary tract and pancreatic diseases
- Reduced radiation exposure compared to standard ERCP
- High image resolution enables more precision in the diagnosis, biopsy and treatment of stones, stenoses, infections and tumors
- Compatible with all common EHL devices



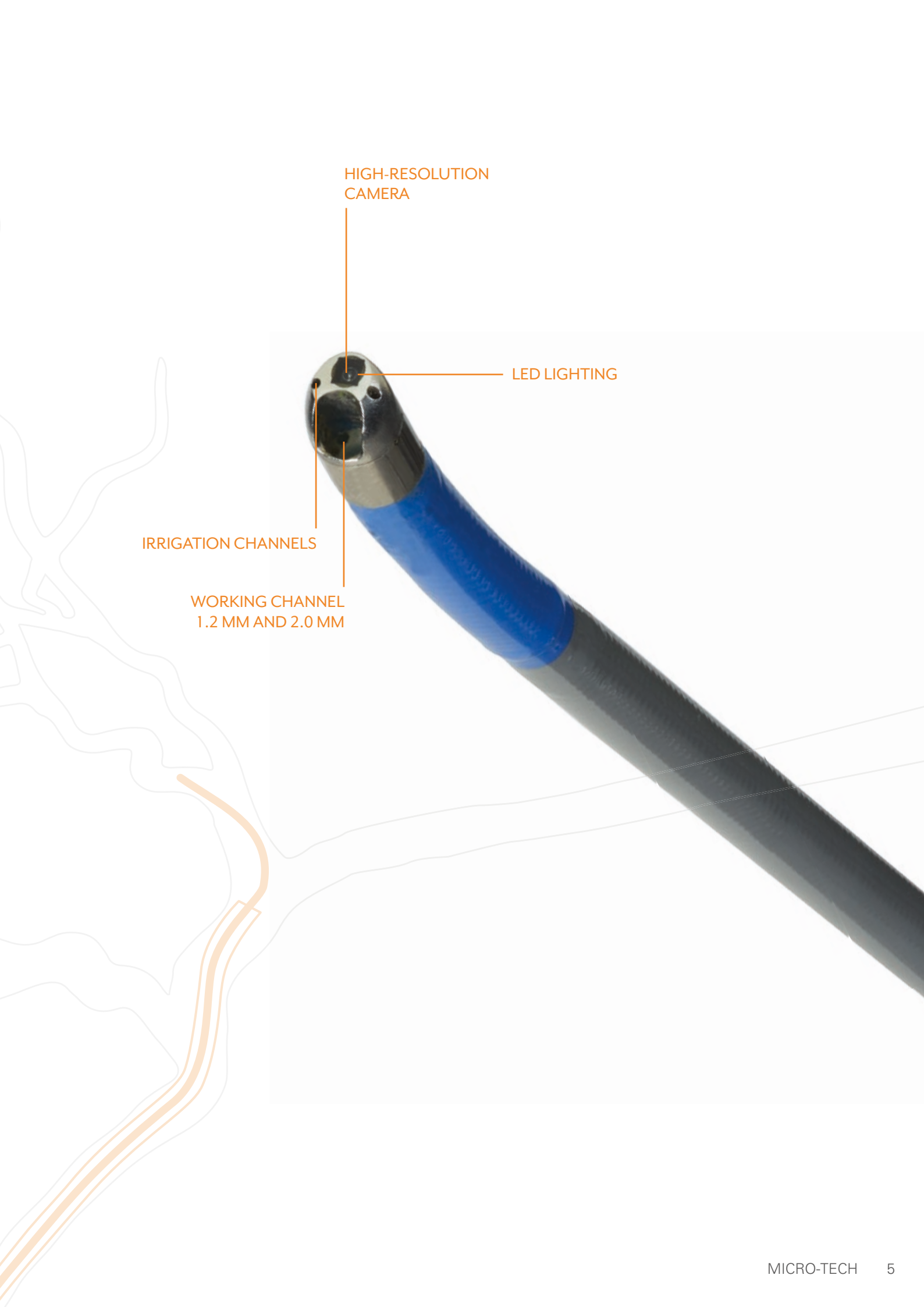
CHOLANGIOSCOPES

HIGH RESOLUTION, 120° ANGLE OF VIEW

- Improved sampling, suction and retraction of foreign bodies
- Excellent visualisation for efficient stone and tissue treatment
- Narrow external diameter for easier passage of stenoses and less traumatic insertion



4-WAY ANGULATION



HIGH-RESOLUTION
CAMERA

LED LIGHTING

IRRIGATION CHANNELS

WORKING CHANNEL
1.2 MM AND 2.0 MM



ACCESS TO THE WORKING
CHANNEL WITH LUER-LOCK
CONNECTION

LOCK FUNCTION FOR SECURING THE ANGLE

FREEZE BUTTON FOR VIEWING PRECISE DETAILS OF THE IMAGE

C-CLAMP FOR DIRECT FIXATION TO THE ENDOSCOPE

ANGULATION WHEELS FOR THE MOVEMENT OF THE DISTAL END FROM UP/DOWN AND LEFT/RIGHT



HIGH-PERFORMANCE PROCESSOR

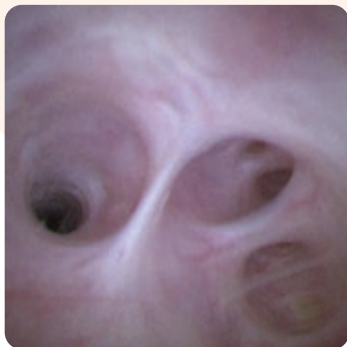
EFFICIENT IMAGE PROCESSING

- High-quality video image signal
- Easy to operate user interface
- Image enlargement up to 3x
- Adjustable display of the visualisation



EXCELLENT IMAGE QUALITY

The eyeMAX cholangioscope enables excellent high resolution image quality for improved visualisation of the bile and pancreatic ducts which can reduce the number of examinations.



C-CLAMP

CLAMP AND GO

The C-Clamp provides a user-friendly way of securing the eyeMAX Cholangioscope directly to the endoscope.



- **Efficiency in daily clinical practice:**

Intuitive and quick attachment directly to the endoscope

- **Easy handling:**

For a smooth workflow during the procedure

- **Ergonomic working:**

Axial rotatability ensures fluid movements and natural handling

SPECIFICATIONS

| REF | max. catheter Ø mm | Working channel Ø mm | Working length mm |
|-------------------------------------|--------------------|----------------------|-------------------|
| CHOLANGIOSCOPES PERORAL | | | |
| CDS11008 | 3.9 | 2.0 | 2200 |
| CDS22008 | 3.2 | 1.2 | 2200 |
| CHOLANGIOSCOPES PERCUTANEOUS | | | |
| CDS11005 | 3.9 | 2.0 | 650 |
| CDS22005 | 3.2 | 1.2 | 650 |

Packing unit: 1 piece

| REF | Interfaces | Dimensions (LxWxH) mm | Power supply | Weight |
|------------------|------------------|-----------------------|--------------|--------|
| PROCESSOR | | | | |
| BS-W-100 | DVI-D, Composite | 355 x 297 x 107 | 230V | 6 kg |
| CABLE* | | | | |
| 996-17913-0300 | DVI-cable | L 3000 | | |
| 996-17907-0300 | BNC-cable | L 3000 | | |

Packing unit: 1 piece

* Please note: when ordering a processor, please specify both cables.

| REF | Country |
|---------------------|---|
| POWER CORD** | |
| BS100-TYPE D | Algeria, Angola, Egypt, Iraq, Lebanon, Libya, Morocco, Mozambique, Oman, South Africa, Sudan |
| BS100-TYPE G | Great Britain, Ireland, Jordan, Kenya, Kuwait, Malta, Qatar, Saudi Arabia, Uganda, United Arab Emirates |
| BS100-TYPE H | Israel, Palestine |
| BS100-TYPE J | Switzerland |
| BS100-TYPE K | Denmark |
| BS100-TYPE L | Italy, Syria |

Packing unit: 1 piece

** Please note: Choose the correct power cord for your country when ordering. For other countries the type E power cord is already included.

ACCESSO



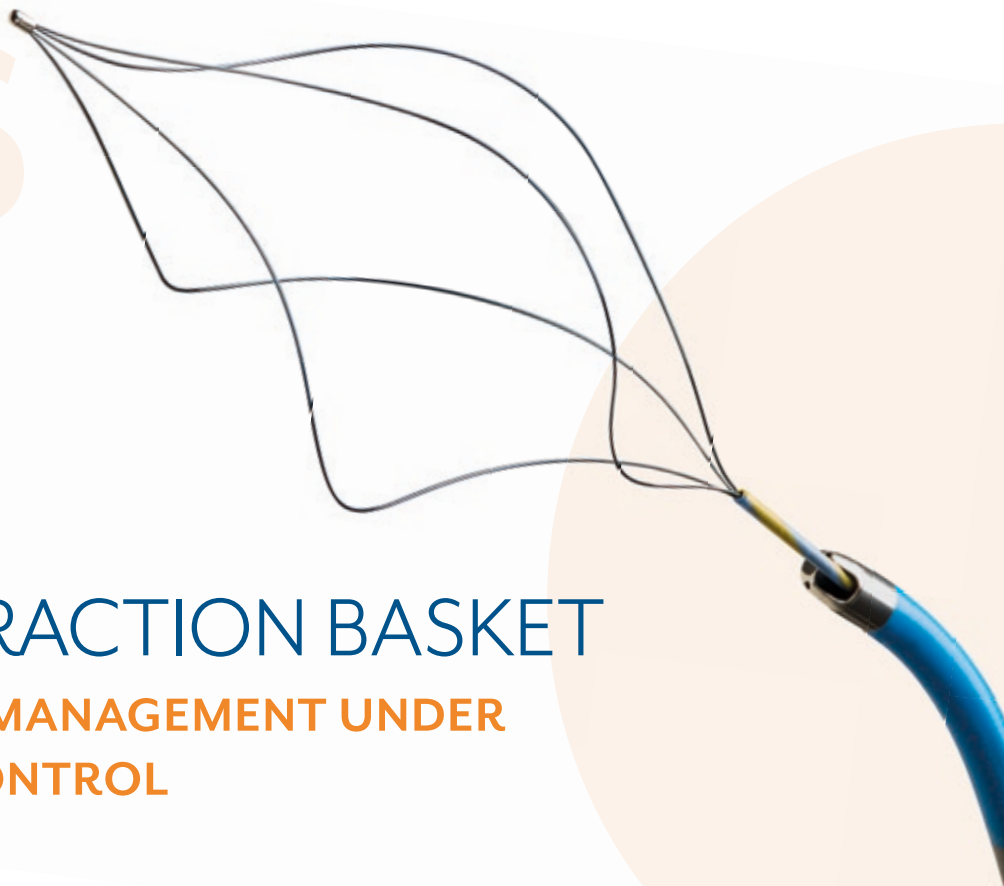
BIOPSY FORCEPS FOR RELIABLE SAMPLES

- Large working channel with 1.2 mm or 2.0 mm diameter for reliable samples and easier sampling
- Easy insertion of forceps even with a bent endoscope due to the short, rigid distal end of the forceps
- In addition to the irrigation channels, fluids can also be injected via the working channel

SPECIFICATIONS

| REF | min. working channel Ø mm | Length mm | Opening width mm | Jaw Ø mm | Spike | Covering | Type |
|------------------------------------|---------------------------|-----------|------------------|----------|---------|----------|-----------|
| BIOPSY FORCEPS PERORAL | | | | | | | |
| BF10006 | 1.1 | 2900 | 3.0 | 1.0 | Without | PTFE | Alligator |
| BF16006 | 1.8 | 2900 | 4.5 | 1.6 | Without | PE | Alligator |
| BIOPSY FORCEPS PERCUTANEOUS | | | | | | | |
| BF10001 | 1.1 | 1200 | 3.0 | 1.0 | Without | PTFE | Alligator |
| BF16001 | 1.8 | 1200 | 4.5 | 1.6 | Without | PE | Alligator |

Packing unit: 2 pieces



STONE EXTRACTION BASKET

EFFICIENT STONE MANAGEMENT UNDER DIRECT VISUAL CONTROL

- Flexible spiral nitinol basket**
 Ensures safe stone retrieval and facilitates the targeted extraction even from complex anatomical structures.
- Designed for deep access**
 Ideally suited for applications in narrow or hard-to-reach areas of the bile and pancreatic ducts.
- Zebra marking on the shaft**
 Improves visual orientation during endoscopic guidance and enables precise navigation.
- Ergonomic handle**
 Fits securely in the hand and enables intuitive and controlled operation of the stone extraction basket.



SPECIFICATIONS

| REF | Format | Ø basket mm | Basket length mm | Compatible with Ø working channel mm | Working length mm |
|---------------------------------------|---------------|-------------|------------------|--------------------------------------|-------------------|
| EYEMAX STONE EXTRACTION BASKET | | | | | |
| CEB00000 | 4-strand wire | 10 | 30 | ≥1.1 | 2900 |
| CEB02020 | 4-strand wire | 20 | 50 | ≥1.1 | 2900 |
| CEB04040 | 4-strand wire | 30 | 70 | ≥1.1 | 2900 |

Packaging unit: 2 pieces

NOTES







Errors and technical modifications subject to change. Rev. 26.02.2026