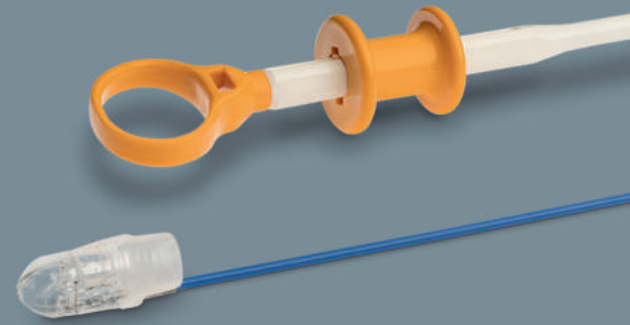


▶ NEW



OTSG Xcavator™

A new dimension in endoscopic grasping

- For the removal of necroses, blood clots and foreign bodies
- Effective removal due to extra-large grasping volume
- Simultaneous use of other instruments possible





..... **OTSG Xcavator™** Ref. no. 200.15

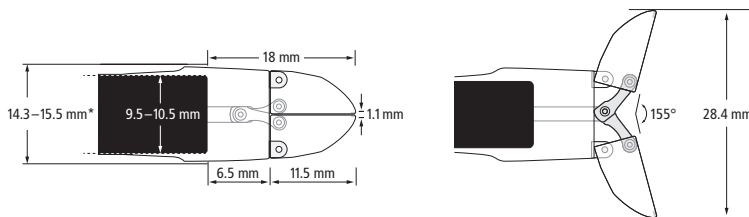
The large volume solution for the removal of difficult to grasp tissue and foreign bodies from the gastrointestinal tract.

The extra-large capacity of the OTSG Xcavator™ allows easy and effective removal of necrotic (pancreatic) tissue, blood clots, food boluses and foreign bodies. The healthy tissue is protected by the blunt scoops during grasping.

The external control of the grasper leaves the working channel free for additional suction/irrigation capacity and allows the combination with further instruments (e.g. snares, graspers, etc.).

The conical design and transparent scoops allow effortless and gentle endoscopic insertion as well as use through a pre-applied stent (Ø min. 15 mm). If required, an additional guide wire (Ø max. 1 mm/0.038 in) can be used.

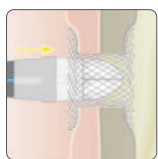
Dimensions



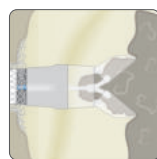
*The maximum outer diameter of the mounted instrument depends on the actual outer diameter of the endoscope.

..... **Application**

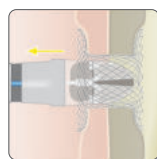
Transgastric pancreatic necrosectomy



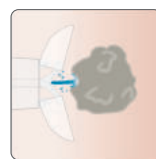
Insertion into the necrotic cavity.



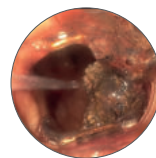
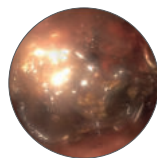
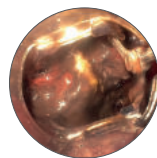
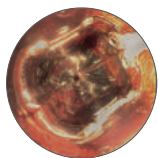
Opening the OTSG Xcavator™ and grasping the tissue.



Retraction through the stent.



Removal of the tissue by means of irrigation.



Source: PD Dr. Christoph Schlag, University Hospital rechts der Isar, Technical University of Munich, Germany

Ovesco Endoscopy AG
Friedrich-Miescher-Strasse 9
72076 Tuebingen, Germany
Germany
Phone +49(0)7071 96528-160
Fax +49(0)7071 96528-260
E-mail service@ovesco.com

Ovesco Endoscopy USA Inc.
120 Quade Drive
Cary, NC 27513
USA
Phone +1 919 651 9449
Fax +1 408 608 2077
customerservice@ovesco-usa.com

Scan here for more product information

