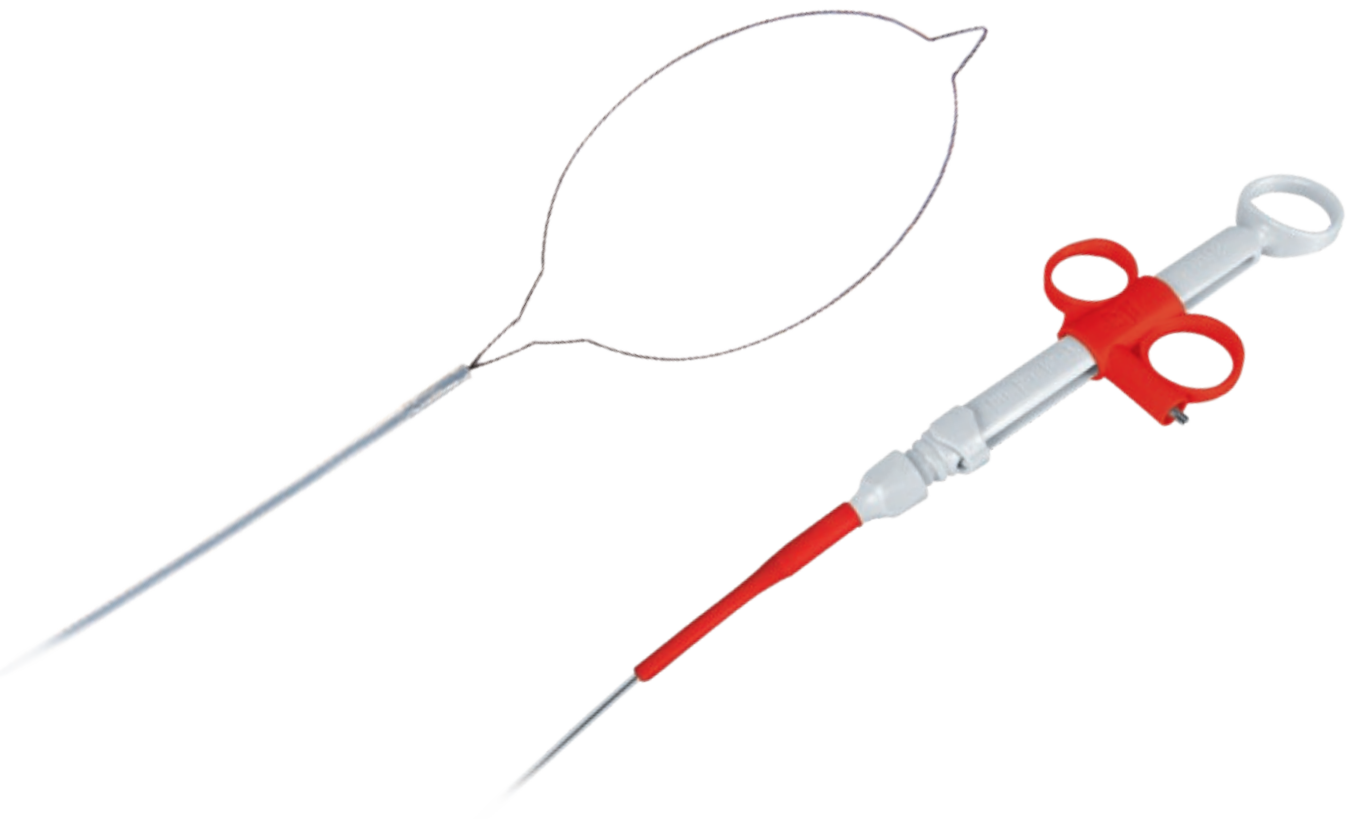




RESECTION

SNARES, ESD-KNIFE, COAGULATION FORCEPS,
INJECTION NEEDLES, POLYP TRAP AND NETS



DAILYSNARE

MORE COMFORT AND RELIABILITY IN EVERYDAY HOSPITAL ROUTINE

In order to make the removal of polyps in everyday hospital routine as efficient as possible, MICRO-TECH has developed a program of disposable polypectomy snares which perfectly combines quality with cost effectiveness. Each

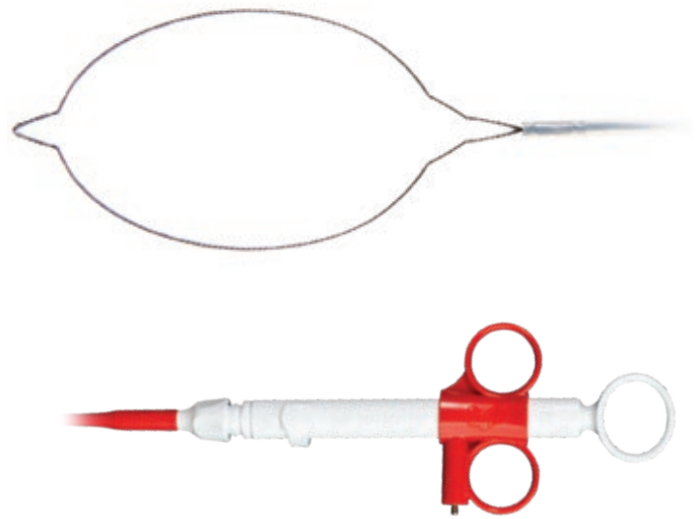
snare is made of specially stranded wire, with enduring radial force, high dimensional stability and precise cutting properties. The 3-ring handle offers a secure hold and transmits every movement reliably to the snare.

SPECIFIC CHARACTERISTICS

- Very comfortable to use
- Reliable and safe
- Innovative HF-connection
- Ergonomic 3-ring handle
- Excellent cutting properties
- High strength of shape
- Strong price-performance ratio

SUCCESSFUL IN PRACTICAL USE

The special stranded wire of DailySnare endows the snare with the radial force it needs to open and be controlled in any position, easily and reliably. DailySnare has proved its worth as a reliable solution in daily routine work owing to its enormous dimensional stability and good cutting properties. Thanks to the new handle the snare can easily be opened and closed even if connected to the HF-cable.



SPECIFICATIONS

REF	Catheter Ø mm	Length mm	Snare Ø mm	Snare type
DISPOSABLE POLYPECTOMY SNARES				
PFS01-01023230	2.3	2300	10	Oval
PFS01-01523230	2.3	2300	15	Oval
PFS01-02023230	2.3	2300	20	Oval
PFS01-02423230	2.3	2300	24	Oval
PFS01-03623230	2.3	2300	36	Oval
PFS01-12423230	2.3	2300	24	Hexagonal
PFS01-33023230	2.3	2300	10/ 20/ 30	3 in 1 vario

Packaging unit: 10 pieces



COLDSNARE

RELIABLE RESECTION OF POLYPS $\leq 9\text{MM}$

The Coldsnare from MICRO-TECH is an instrument that is suitable above all for cold resection of polyps $\leq 9\text{mm}$. This thin, braided cutting wire and its 0.23 mm wire thickness were specially developed for cold resection and makes for a highly precise, clean cut in combination

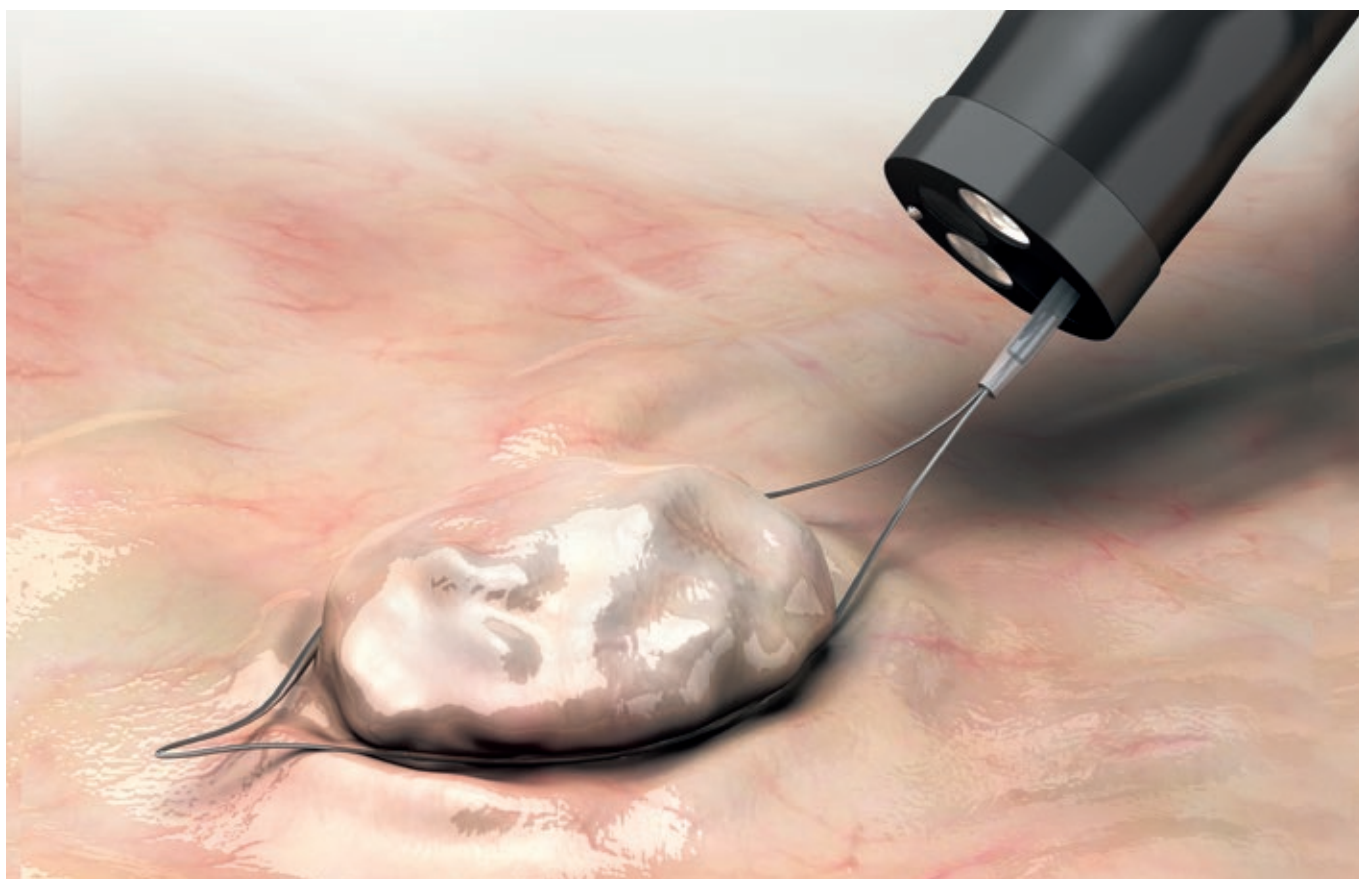
with the snare design optimized for excision of small polyps. The excised polyp is free of thermal defects and ensures that the histological assessment will provide valuable information.

SPECIFIC CHARACTERISTICS

- Compliant with guidelines for polyps $\leq 9\text{mm}$
- Special cutting wire
- Optimized snare design
- Precise, uniform cut
- High level of control
- Ergonomic grip



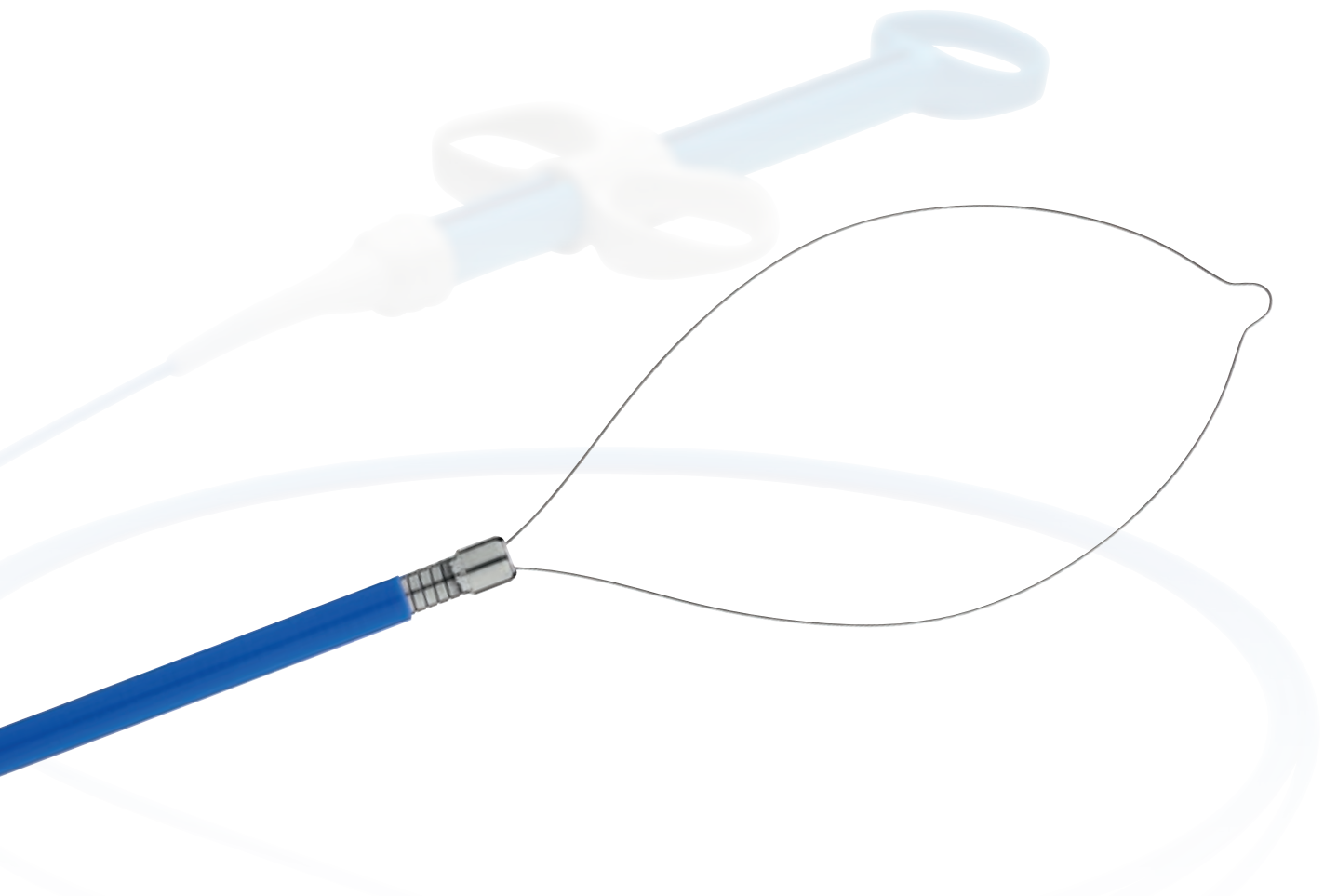
Precision grip with ergonomic design



SPECIFICATIONS

REF	Tube Ø mm	Length mm	Snare Ø mm	Snare type	Wire Ø mm
COLDSNARE					
CS3-11023230	2.3	2300	10	Rhombus	0.23
CS3-11523230	2.3	2300	15	Rhombus	0.23

Packaging unit: 10 pieces



LESIONHUNTER COLDSNARE

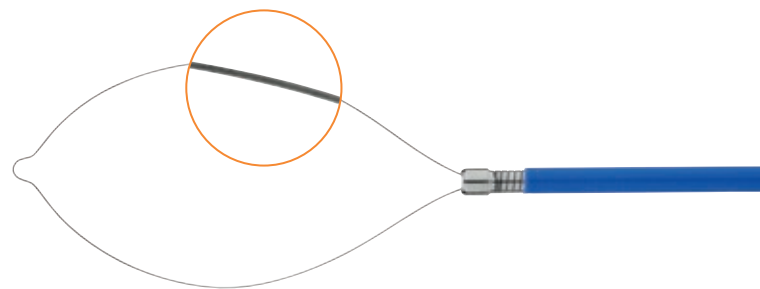
EFFICIENT AND PRECISE RESECTION

The LesionHunter Coldsnares expands MICRO-TECH's portfolio with a highly stable and precise cold resection solution. The snare features a rotatable nitinol loop that maintains its oval shape even after multiple resections, ensuring consistent tissue capture. The ultra-thin 0.18-

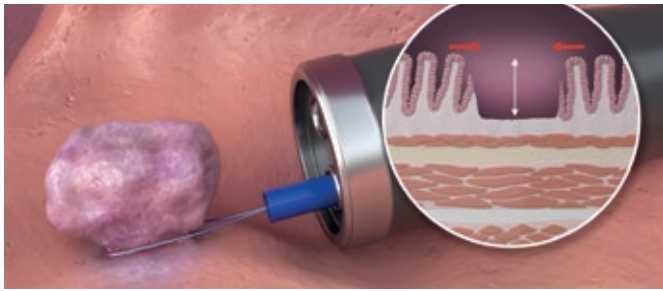
mm nitinol wire smoothly separates the tissue and the polyp, leaving the polyp in the resection bed so it can be easily found and removed. The LesionHunter Coldsnares is available in three snare diameters – 10, 15 and 20 mm – and thus offers the right solution for many polyp sizes.

SPECIFIC CHARACTERISTICS

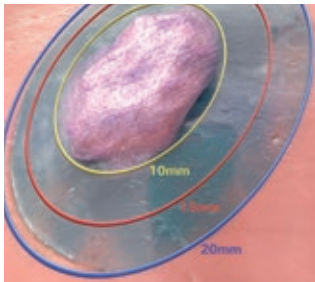
- Rotatable, dimensionally stable snare for increased durability
- Thin nitinol wire for a clean cut
- Wrapped metal catheter for more stability during resection
- Ergonomic 3-ring handle for precise control
- Removed tissue remains in the resection bed and is easier to find



In contrast to traditionally braided cold snares, the LesionHunter snare consists of a 0.18-mm thin monofilament nitinol wire.



Removing small polyps with a cold snare can reduce the risk of delayed bleeding.



The three available snare diameters allow the selection of a snare that completely encloses the polyp. As a result, a safe distance from healthy tissue around the resection site can be achieved after the resection.



The LesionHunter Coldsnare reliably encloses the polyp, and its ultra-thin 0.18-mm monofilament nitinol wire ensures a clean cut.



Every movement of the ergonomic handle is transferred directly to the snare – for precise rotations and secure cuts.

SPECIFICATIONS

REF	Max. outer diameter mm	Working length mm	Snare Ø mm	Snare shape	Wire thickness mm
LESIONHUNTER COLDSNARE					
CS2-21023231	≤ 2.5	2300	10	Oval	0.18
CS2-21523231	≤ 2.5	2300	15	Oval	0.18
CS2-22023231	≤ 2.5	2300	20	Oval	0.18

Packaging unit: 10 pieces



GOLDKNIFE

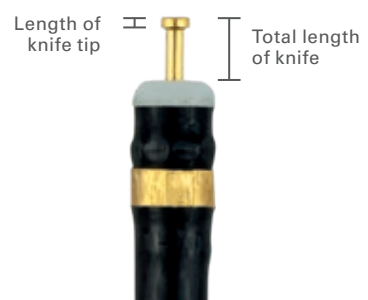
ELECTROSURGICAL PRECISION WITHOUT CHANGING INSTRUMENTS

The GOLDKNIFE from MICRO-TECH allows for effective and reliable endoscopic submucosal dissections. Thanks to the combination of water-jet and electro-surgery, all working steps- marking (with the exception of the IT type), injection, dissection and coagulation – can be performed without switching instruments. The high-pressure water jet combined with electro-surgery creates a submucosal pillow

of water that allows replenishment at any time to protect against thermal and mechanical injuries. The handle facilitates a smooth and seamless extension of the knife. The balanced rigidity of the tube also enables precise knife guidance. Choose from four different knife tips with different cutting and coagulation properties.

SPECIFIC CHARACTERISTICS

- Water jet combined with electro-surgery
- Independent marking (with the exception of the IT type), injection, dissection and coagulation without switching instruments
- Replenishing the water pillow (optional) while dissecting and resecting
- 4 different knife tips





Type I: Great freedom of movement, versatile, higher level of difficulty



Type T: Ideal for removing under tension. Better coagulation options and optimized cutting direction while dissecting



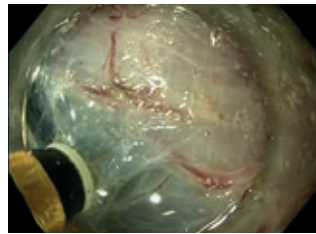
Type O: Crescent-shaped tip maximizes coagulation effect



Type IT: The 1.6 mm insulated ceramic tip minimizes the risk of perforation and thus enables safe dissection



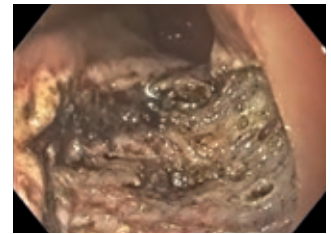
Marking



Injection water cushion



Dissection



Findings after removal

SPECIFICATIONS

REF	Shape of the knife tip	Total length of knife / Length of knife tip mm	Working length mm	Working channel Ø mm
GOLDKNIFE-I-TYP				
MK-I-1-165	I	1.5	1650	2.8
MK-I-1-235	I	1.5	2350	2.8
MK-I-2-165	I	2	1650	2.8
MK-I-2-235	I	2	2350	2.8
MK-I-4-165	I	4	1650	2.8
MK-I-4-235	I	4	2350	2.8
GOLDKNIFE-O-TYP				
MK-O-1-165	O	1.5 / 0.35	1650	2.8
MK-O-1-235	O	1.5 / 0.35	2350	2.8
MK-O-2-165	O	2 / 0.35	1650	2.8
MK-O-2-235	O	2 / 0.35	2350	2.8
MK-O-4-165	O	4 / 0.35	1650	2.8
MK-O-4-235	O	4 / 0.35	2350	2.8
GOLDKNIFE-T-TYP				
MK-T-1-165	T	1.5 / 0.35	1650	2.8
MK-T-1-235	T	1.5 / 0.35	2350	2.8
MK-T-2-165	T	2 / 0.35	1650	2.8
MK-T-2-235	T	2 / 0.35	2350	2.8
MK-T-4-165	T	4 / 0.35	1650	2.8
MK-T-4-235	T	4 / 0.35	2350	2.8
GOLDKNIFE-IT-TYP				
MK-IT-4-235	IT	5.6	2350	2.8

Packaging unit: 1 piece



SURETRAC

BETTER VISIBILITY IN ESD PROCEDURES

The MICRO-TECH Traction Device 'SureTrac' offers a practical and proven method for supporting ESD procedures in the gastrointestinal tract. With the well-established LOCKADO™ clip and the elastic silicone band, the preloaded system enables efficient tissue tension and improves the view of the dissection area. The traction

is achieved by hooking a second clip into one of the four available rings. The four rings allow individual adjustment of the span and can be readjusted during the procedure. SureTrac is a functional system that enables easy handling and effectively supports the clinical workflow.

SPECIFIC CHARACTERISTICS

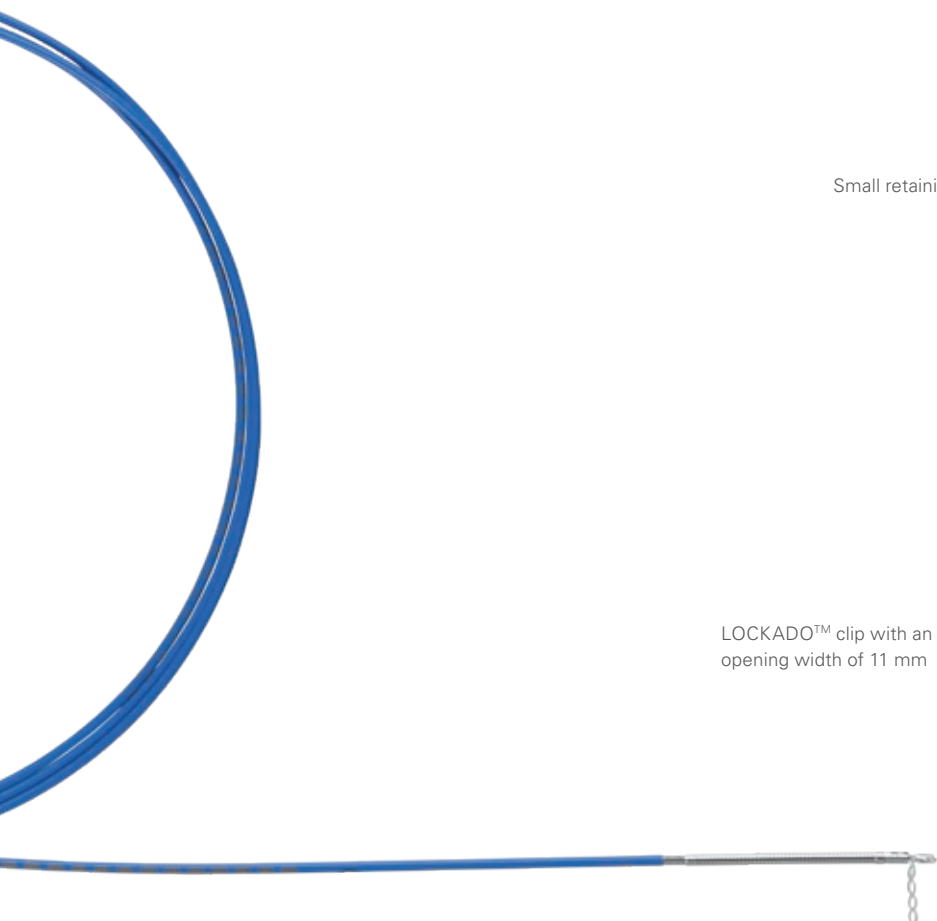
- Preloaded traction system
- Elastic, latex-free silicone band with four rings
- Small retaining ring secures silicone band to the clip arm
- Improved view of the resection area



The ergonomic handle ensures precise control of the clip



Small retaining ring on the clip arm



LOCKADO™ clip with an opening width of 11 mm



SPECIFICATIONS

REF	Clip opening width mm	Length mm	Working channel Ø mm	Centre distance between the retaining ring and the fourth ring mm
SURETRAC				
ETD01008	11	2350	3.2	12.3

Packaging unit: 10 pieces

REF	Clip opening width mm	Length mm	Clip angle	Instrument Ø mm	Grip colour	Rotation	Covering
LOCKADO™							
LOCK-C-26-230-C*	8	2300	135°	2.6	Pink	360°	Pink
LOCK-D-26-230-C	11	2300	135°	2.6	Blue	360°	Blue
SURECLIP™ PREMIUM ECO							
ROCC-C-26-230-C-S	8	2300	135°	2.6	Pink	360°	Grey
ROCC-D-26-230-C-S	11	2300	135°	2.6	Blue	360°	Grey

*Recommended second clip
Packaging unit: 10 pieces



DAT – DUAL ACTION TISSUE CLOSURE DEVICE

OUR APPROACH FOR DEFECTS UP TO 5 CM

The DAT Closure Device is designed for simplicity, speed, and effectiveness in gastrointestinal defect closure. Its centre stem and independently operating arms enable precise tissue capture and controlled manipulation for secure mucosal and submucosal defect closure. The DAT

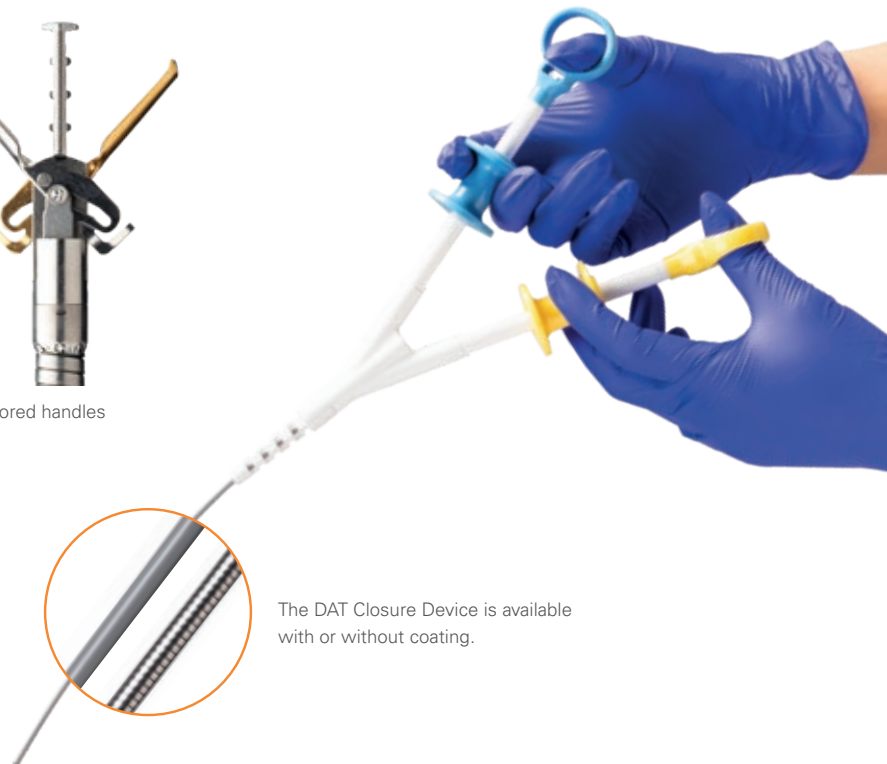
Closure Device is easily repositionable before deployment and can be used on its own or to approximate and hold tissue margins in place while additional LOCKADO™ Clips are applied for enhanced closure security.

SPECIFIC CHARACTERISTICS

- Closure of mucosal/submucosal defects
- 96,3 % technical success rate in complete closure*
- 0,9 % risk of delayed bleeding*
- Secure tissue approximation
- Simplification of complex endoscopic procedures
- Through-The-Scope-system for direct treatment of defect under visual control
- Easy handling and ready to be used



The two arms can be controlled individually using the different colored handles



The DAT Closure Device is available with or without coating.

SPECIFICATIONS

REF	Opening width mm	Length mm	Min. working channel Ø mm	Grip colour	Covering
DAT CLOSURE DEVICE					
STA00003	15	2350	3.2	Blue/Yellow	Grey
STA00006	15	2350	3.2	Blue/Yellow	Without

Packing unit: 1 piece

REF	Opening width mm	Length mm	Clip angle	Min. working channel Ø mm	Grip colour	Rotation	Covering
LOCKADO™ G-TYPE							
LOCK-G-26-195-C	20	1950	135°	2.8	Grey	Left / Right	Grey
LOCK-G-26-230-C	20	2300	135°	2.8	Grey	Left / Right	Grey
LOCKADO™							
LOCK-D-26-195-C	11	1950	135°	2.8	Blue	Left / Right	Blue
LOCK-D-26-230-C	11	2300	135°	2.8	Blue	Left / Right	Blue
LOCK-F-26-195-C	16	1950	135°	2.8	Yellow	Left / Right	Yellow
LOCK-F-26-230-C	16	2300	135°	2.8	Yellow	Left / Right	Yellow
SURECLIP™ PREMIUM ECO							
ROCC-D-26-195-C-S	11	1950	135°	2.8	Blue	Left / Right	Grey
ROCC-D-26-230-C-S	11	2300	135°	2.8	Blue	Left / Right	Grey
ROCC-F-26-195-C-S	16	1950	135°	2.8	Yellow	Left / Right	Grey
ROCC-F-26-230-C-S	16	2300	135°	2.8	Yellow	Left / Right	Grey

Packing unit: 10 pieces

*Source: Mohammed A, Robalino Gonzaga E, Hasan MK, et al. Low delayed bleeding and high complete closure rate of mucosal defects with the novel through-the-scope dual-action tissue clip after endoscopic resection of large nonpedunculated colorectal lesions (with video). *Gastrointest Endosc.* 2023;--1-8. doi:10.1016/j.gie.2023.07.025



ENSURE

FORCEPS FOR SAFE COAGULATION

MICRO-TECH ENSURE Coagulation Forceps are designed to assist physicians in effectively coagulating bleeding sites during interventional endoscopic procedures. They allow the user to securely grasp vessels and cut or coagulate them using HF power connection. Bleeding vessels can be reliably staunched during and after endoscopic submucosal dissection, without harming the surrounding tissue. This is ensured by the

well-grooved jaws of the forceps. They ensure a secure grip and prevent slippage during coagulation. Thanks to the maximum opening width of up to 6.3 mm, even large lesions can be coagulated. Precise and comfortable operation is ensured by the ergonomic handle, which enables reliable rotation of the forceps. In addition, the bidirectional HF power connection ensures more comfortable handling during the procedure.

SPECIFIC CHARACTERISTICS

- For effective hemostasis during ESD and EMR
- Secure, non-slip hold
- Reliable rotation
- 360° bidirectional rotation of the HF power connection
- Opening width 6.3



Ergonomic 3-ring handle with soft grip and 360° HF power connection

SPECIFICATIONS

REF	Opening width mm	Length mm	Branch	Exterior diameter of distal tips mm	Working channel Ø mm
TYPE B					
CF165-B	6.3	1650	grooved	≤ 2.7	≥ 2.8
CF230-B	6.3	2300	grooved	≤ 2.7	≥ 2.8

Packaging unit: 10 pieces



DISTAL CAPS

CLEAR VIEW FOR CLEAR RESULTS

The 4 mm distal caps provide an optimal field of view during therapeutic procedures and diagnostics. The transparent material allows a clear view and provides a reliable grip on the endoscope. The soft material is ideal for

smoothing mucosal folds. Surrounding or affected tissue is thus protected. The distance between the endoscope and the mucosa makes the distal cap ideal for a range of endoscopic procedures.

SPECIFIC CHARACTERISTICS

- Optimized view through transparency
- Side opening for pressure equalization and also for draining liquids
- Facilitates detection
- Secure grip on the endoscope
- Atraumatic, distal cap edge



VERSATILE APPLICATIONS

- ESD
- EMR
- Zenker
- Hemostasis
- Colonoscopies

SPECIFICATIONS

REF	Form	Length mm	Distal cap Ø in mm
DISTAL CAPS			
XT-DL-092-40	straight	4	9.0 – 9.2
XT-DL-098-40	straight	4	9.6 – 9.8
XT-DL-099-40	straight	4	9.7 – 10.1
XT-DL-115-40	straight	4	11.3 – 11.7
XT-DL-122-40	straight	4	12.0 – 12.4
XT-DL-128-40	straight	4	12.6 – 13.0
XT-DL-132-40	straight	4	13.0 – 13.4

Packaging unit: 10 pieces



INJECTION NEEDLE

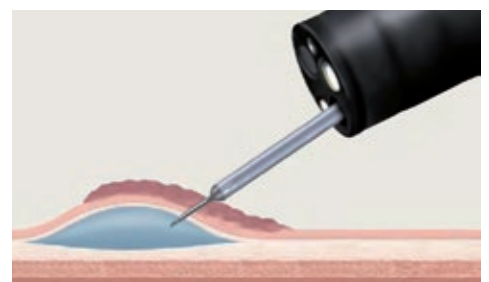
WHERE ERGONOMICS MEET RELIABILITY

MICRO-TECH's disposable injection needle enhances clinical practice due to its ergonomic handle and improved needle sharpness. The automatic "pen-style" handle allows single-handed use. For even more precise punctures, the needle has varying stiffness levels that can be gradually adjusted. When the needle is exposed, the quick-release

button snaps the needle back into the catheter to avoid damage to the working channel. The patented ratchet mechanism provides audible confirmation of a drawn needle, providing an effective exchange between the physician and nurse.

SPECIFIC CHARACTERISTICS

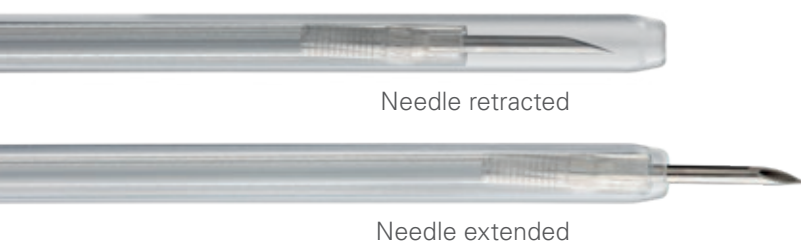
- Ergonomic handle with one-handed operation
- Patented ratchet mechanism with audible confirmation
- Adjustable stiffness levels
- Quick-release button for a safe needle retraction
- Enhanced needle sharpness for precise penetration
- Different needle diameters and lengths
- Easy attachment via a secure Luer-Lock connection



SPECIFICATIONS

REF	Needle length mm	Needle Ø	Working channel Ø mm	Length mm
INJECTION NEEDLE – POLYPECTOMY/EMR				
IN12-195232302	5	19 G = 1.1 mm	2.8	2300
IN12-225232302	5	22 G = 0.7 mm	2.8	2300
IN12-255232302	5	25 G = 0.5 mm	2.8	2300
INJECTION NEEDLE – ESD				
IN12-224232302	4	22 G = 0.7 mm	2.8	2300
IN12-254232302	4	25 G = 0.5 mm	2.8	2300

Packaging unit: 10 pieces



Needle retracted

Needle extended

POLYP TRAP

WITH FOUR CHAMBERS

SPECIFIC CHARACTERISTICS

- Four separate numbered chambers in transparent transport container
- Flexible connecting hoses
- Accurate allocation of samples
- Safe connection to endoscope and suction system

SPECIFICATIONS

REF	Description
POLYP TRAP	
BBP-50	Polyp trap with 4-chamber





PROTRAP LUMA

FOR GREATER CLARITY DURING POLYP REMOVAL

With MICRO-TECH's inline polyp trap, removing polyps larger than 1 mm is particularly safe and easy. The unique design enables non-contact sampling and is gentle on the polyp. The extracted polyp is collected in the sample

tray and can be viewed in detail through the built-in magnification window. To collect several samples, the sample tray can be quickly and easily exchanged, with no loss of suction power.

SPECIFIC CHARACTERISTICS

- Removable drip tray
- Magnification window
- Ergonomic design
- Easy to use
- Tightly sealed for safe suction
- Light stick for better polyp visibility



ProTrap Luma consists of a tube, trap body, collection sieve and light stick



The trays capture the polyps, are easily replaceable and fit into a standard sample cup

SPECIFICATIONS

REF	Description	Packaging unit
PROTRAP LUMA		
BBPA00001	ProTrap Luma In-Line Polyp Trap	25 pcs/box
BBPA10001	ProTrap Luma Specimen Tray	50 pcs/box



NETS

SAFELY REMOVE FOREIGN BODIES AND POLYPS

The MT net has been developed for the removal of polyps and foreign bodies and enables the reliable recovery of tissue samples. The net itself consists of a reinforced thread

material, which offers additional safety during recovery. Thanks to its unique dimensional stability and large opening, it facilitates work over several passes

SPECIFIC CHARACTERISTICS

- Large net
- High quality manufacture
- Comfortable 3-ring handle
- Easy and precise opening



Shape stable MT net

SPECIFICATIONS

REF	Ø net mm	Snare	Working length mm	Ø working channel mm
RETRIEVAL NET				
NT-E-30/23-P	30	Oval	2300	2.8
NT-E-30/16-P	30	Oval	1600	2.8

Packaging unit: 10 pieces

