

OUR FUTURE IS ENDOSCOPY

A TOP AND INFLUENTIAL PLAYER

SonoScape was founded in 2002, in Shenzhen, China. Today, it is one of the Top 10 medical equipment manufacturers for ultrasound. SonoScape entered into the endoscopy industry in 2012, rapidly ascending to become the No.1 Chinese endoscopy manufacturer in its domestic market.

SonoScape is a publicly listed company since 2017.

contact us: market@sonoscape.net

OUR FUTURE IS ENDOSCOPY

HD-550



HD-510



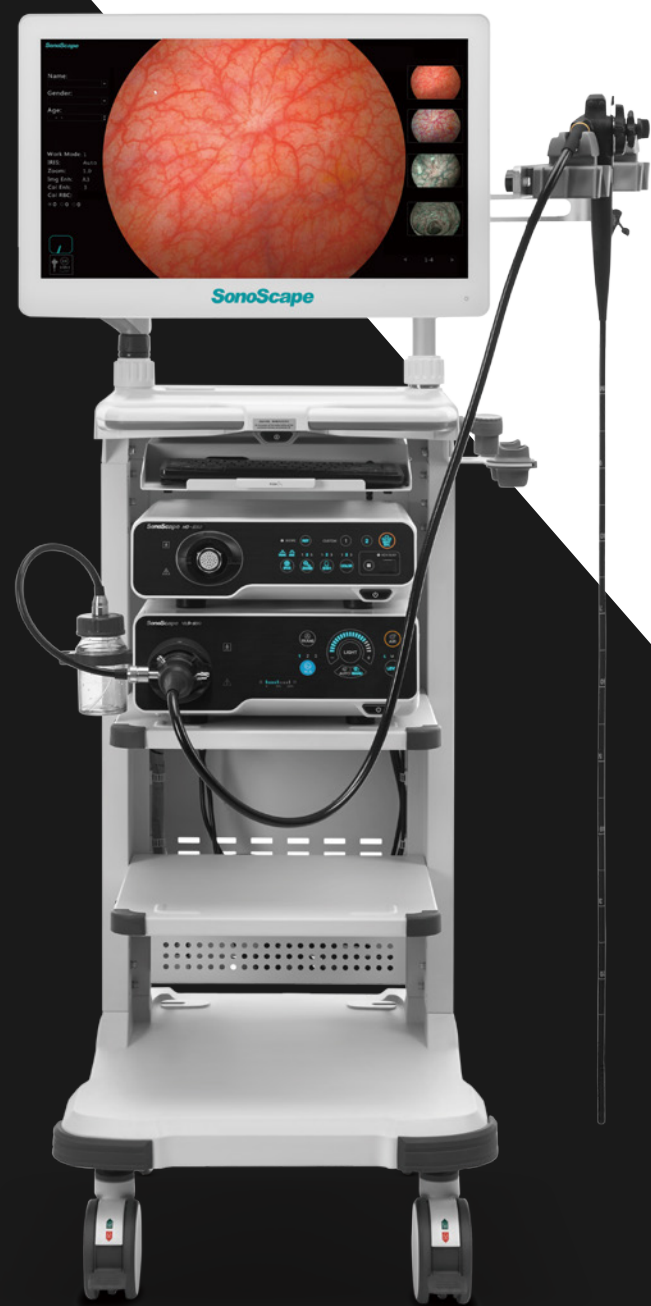
HD-500



BOOSTED BRILLIANCE AT EVERY TURN

HD-550

Full High Definition Video Endoscopy System with 4-LED Light Source and SFI/VIST Technology

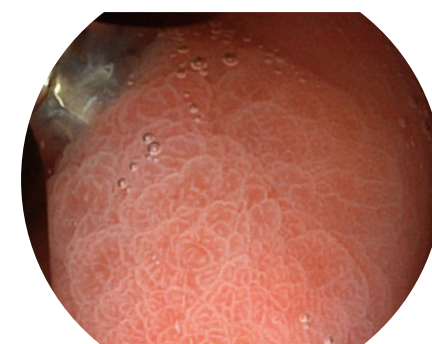


Introducing a boosted brilliance at every turn on your way to image clarity. HD-550 is now equipped with the 4-LED light source, and an upgraded scope tubing. Supporting 1080p resolution, the added brightness provides even more image details under all light modes, and truly smooths the path in both diagnostic and therapeutic procedures.

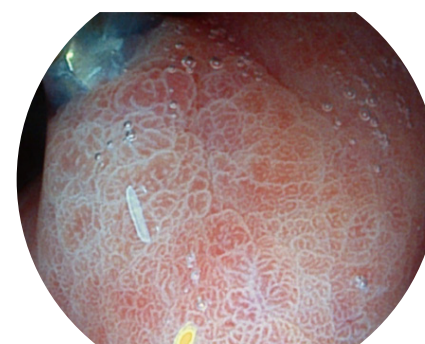
Boosted Image Performance

The 4-LED light source enables multi-spectrum and multi-mode imaging. Its versatility not only allows a superior brightness under the White Light mode, but also an uncompromised illumination under chromoendoscopy modes SFI¹ and VIST², where the vascular color contrast and mucosal structure are greatly enhanced. You will get much more from this level of image performance.

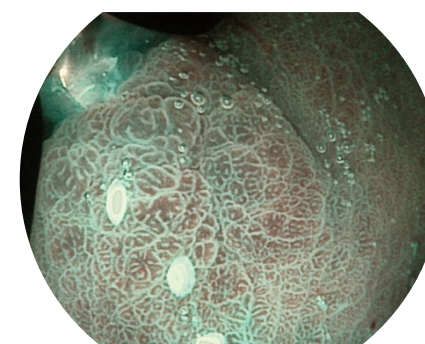
White-light Mode (Default)	SFI Mode	VIST Mode
<ul style="list-style-type: none"> Highly illuminated image True to color Suitable for routine observation 	<ul style="list-style-type: none"> Normal-focus mode with enhanced structure and color Supporting in detection and demarcation of the lesions 	<ul style="list-style-type: none"> Near-focus mode with increased mucosal contrast Assisting in characterization of the lesions and diagnosis



White Light



SFI



VIST

¹SFI: Spectral Focused Imaging

²VIST: Versatile Intelligent Staining Technology

Boosted Life span

The 4-LED light source comes with an extended life span. Enjoy the reliable brightness for much longer before thinking about bulb replacement.



Boosted Maneuverability



Ergonomic experience

A new scope tubing paired with a light-weight handle, the upgraded 550 series scopes offer great comfort and ease during routine and complex operations, helping to shorten the procedure time, and to reduce both patients' discomfort and yours.

Fulfilling visual field

After an easy intubation, observe to full extent owing to the scope's short bending radius and large field of vision. Diagnose and treat with confidence, thanks to its water jet function and generous instrument channel.



Ingenious design

One-Touch connection, and real water-proof, the 550 series scopes can be plugged and unplugged, cleaned and disinfected straightforwardly at a minimal risk of water damage by mismanipulation, which indeed lightens your team's workload.



A BRIGHTER WAY TO IMAGE CLARITY

HD-510

High Definition Video Endoscopy System with 2-LED Light Source and SFT/VIST Technology



The one-stop, cost effective, High Definition Video Endoscopy System just got better. SonoScape's HD-510 Processor has evolved in many ways, excelling in a variety of screening and diagnosis procedures.

More versatility with the new multi-mode SFI/VIST

The new chromoendoscopy SFI/VIST is interchangeable at the touch of a button, between White-light, SFI¹, and VIST², instantly suiting your needs in detection, demarcation or characterisation.

White-light Mode	SFI	VIST
Default	Vascular enhancement	Mucosal and vascular enhancement



Courtesy of Dr. Rahul Pathak

Maximised optical effect, minimal light loss, and balanced brightness

In its long lifespan of 10,000 hours, the 2-LED light source consistently offers intensive, purified and all-round light options. Subsequently through an upgraded algorithm, HD-510 masterfully stabilises and balances the overall exposure. You will obtain a noticeably brighter image and impressive staining effects, yet retaining all details in the visual field.

HD-510 is compatible with the 500 and 550 series scopes, both equipped with CMOS.

Whether it is a routine procedure or a complex operation, there is a benefit of having a CMOS image sensor. It enables a High Definition image output, with sharper edge and displaying more details.



Improved scope handle design

Comfortable to hold, the scope handle adopts an ergonomic design and a more intuitive layout, helps to reduce the fatigue in longer interventions.



Outstanding manoeuvrability

Short bending radius and gradual stiffness allows to intubae, reach and observe efficiently. The large instrument channel facilitates the therapeutic procedures.



Equipped with water jet

All the scopes are equipped with water jet function, handily aligned with the direction of the instrument channel, it washes off any mucus or blood and assures a clear view.

Take advantage of HD-510's full HD capacity: achieve the exceptional clarity of 1080p resolution, if you opt for a 550 series scope that is armed with a 2-megapixel CMOS sensor.



One-Touch connection for hot plugging

Switching a 550 scope has never been this convenient. Plug and play without interrupting the processor, the system guarantees a seamless procedure at any time.



Real waterproof

The 550 series scopes can be submerged under water or solution without a waterproof cap. They can now be cleaned and disinfected with ease, at a minimal risk of water damage by mismanipulation.



¹ Spectral Focused Imaging
² Versatile Intelligent Staining Technology

PERFORMING TO ITS FULL EXTENT

HD-500

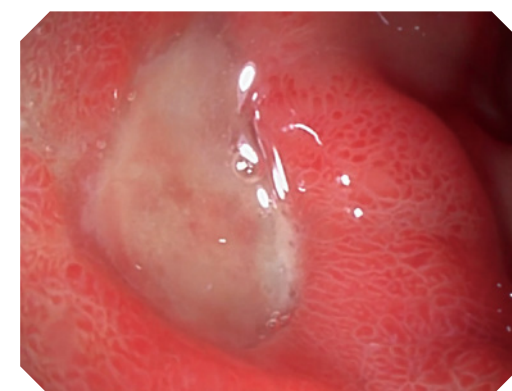
High Definition Video Endoscopy System paired with 2-LED light source



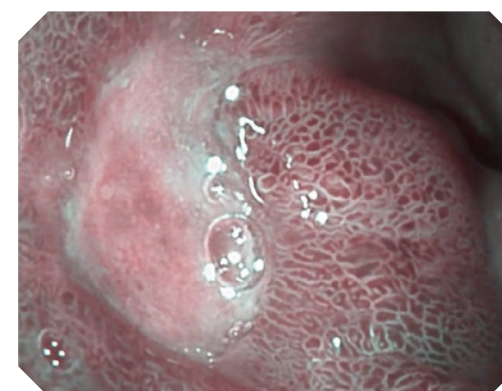
The timeless one stop, cost-effective solution is evolving with your needs. Today, you are able to get the best out of the HD-500 image processor as we upgrade the system's configuration. Under the lasting luminance from SonoScape's 2-LED Light Source, you will be pleasantly surprised by your familiar video endoscopy system.

Leverage both light modes

VIST¹ is a chromoendoscopy technology combining optical and digital image processing. At the touch of a button, it provides a clear and bright image contrast, that allows a better vision of mucosa and blood vessels in the GI tract. VIST makes it easier to detect and characterize the lesions.



White light image



VIST image

Under both White Light and VIST modes, HD-500 image processor yields even more details with the 2-LED light source, and no longer sacrifices the brightness in the far field. The image quality is greatly improved.²

Whether it is a routine procedure or a complex operation, there is a benefit of having the 500 Series scopes. Their CMOS image sensor enables multi-stage enhancement in color, edge and structure, resulting in an optimal display through an internal processing.

Save more cost

The life span of the 2-LED light source is above 10,000 hours, resulting in reduced maintenance costs.

¹ VIST stands for Versatile Intelligent Staining Technology

² Compared with the configuration: HD-500 paired with xenon light source



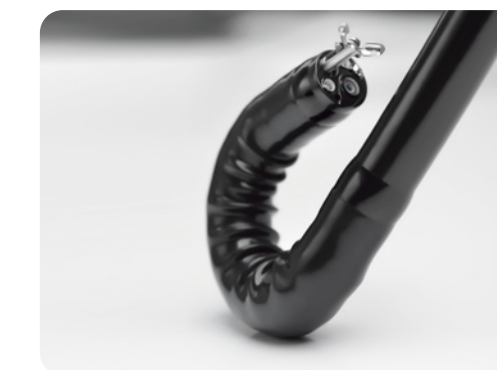
Brilliant workflow

The HD-500 features a built-in workstation with 500GB of hard disk. Storing and archiving what you have captured in a single step. It lets you access patient data management systems, generate, edit and print personalized reports smoothly, without the need of any external software.



Improved scope handle design

Even more comfortable to hold, the 500 series handle adopt ergonomic design and a more intuitive layout, helps to reduce the fatigue in longer interventions.



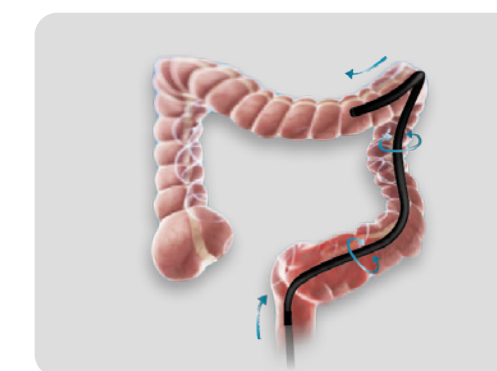
Outstanding manoeuvrability

Short bending radius and gradual stiffness allows to intubate, reach and observe efficiently. The large instrument channel facilitates the therapeutic procedures.



Equipped with water jet

All the scopes are equipped with the water jet function. It washes off any mucus or blood, and assures a clear view at all times.



Optimized insertion experience

The gradual stiffness makes the insertion experience easier and smoother, at any section of the GI luminal tract.

INTERWOVEN MASTERY

EG-UR5

360° Radial Echoendoscope

The combination of SonoScape's strongest know-how is no longer a speculation. The arrival of the 360° radial echoendoscope EG-UR5 is now the touchstone of precise diagnosis in the GI tract and its extra-luminal structure. Let it guide your way and benefit from a mastery of both advanced ultrasound and endoscopy technology.



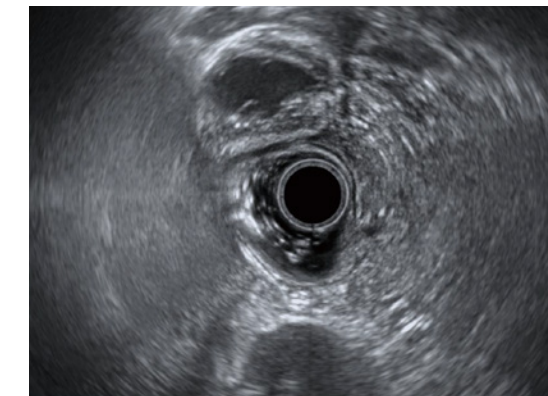
Mastery of View

Achieve a broader vision with EG-UR5's 360° scanning angle, and obtain an impartial perspective at each step as you advance. The scope has a large field of view which doesn't compromise the forward endoscopic visual field. The high-definition outputs from both the endoscopic and ultrasound systems jointly provide an outstanding precision in diagnosis.

Not to miss any important detail even it is subepithelial, thanks to EG-UR5's adjustable focus points, ample spectrum of ultrasound frequencies that penetrate deep in the tissue.



Cross-Section of the Pancreas



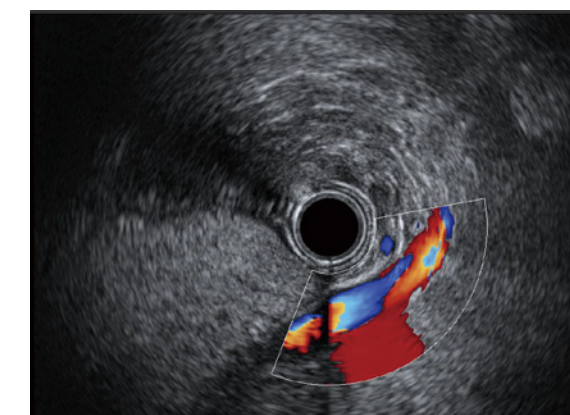
Cross-Section of the Duodenal Bulb

Mastery of Functionality

Take full advantage of SonoScape's advanced ultrasound systems and their outstanding performance. Switch with ease amongst an array of display modes, B/M/CFM/Power Doppler/Pulse Wave Doppler, to suit changing clinical needs.

In addition, EG-UR5 offers an integrated 2.2mm working channel that allows direct biopsy.

Assisted by not only the ultrasound information but also SonoScape's chromoendoscopy technology, the pin-point diagnosis becomes possible.



Cross-Section of the Liver left lobe and Hepatic Veins

Mastery of Comfort

Packed in a slim body, EG-UR5 possesses a small distal end with short bending radius as it deflects in all four directions. Its versatility and flexibility will be appreciated by both you and your patients.



Meet S60, SonoScape's premium Color Doppler Diagnostic Ultrasound System

- High density volume rendering engine
- 3D rendering
- Versatile in other medical specialties with various new premium transducers



PUSHING THE BOUNDARIES OF THERAPEUTIC EXCELLENCE

EG-UC5T

Linear-Array Echoendoscope

**CE currently being pursued, estimated to be available by 2021. To know more, please contact your local SonoScape representatives.*



With ultrasound endoscopy, we are looking beyond just a better diagnosis yield. Introducing* the EG-UC5T Linear-Array echoendoscope that widens staging and therapeutic options. Reaping the benefits of decades of ultrasound technology know-how, combined with our endorsed endoscope design, SonoScape's EG-UC5T fulfils and exceeds the most sought-after requirement from your medical team, levelling up the vision and achievement behind the wall of the GI tract.

All Rounder

There is never right or wrong echoendoscope but the one fits your clinical needs. The versatile EG-UC5T makes the choice easier.

- 4.0-mm Instrument channel
- 12.6-mm Insertion diameter
- Short bending radius
- Scanning angle amounts to 150°
- 4-12MHz Accoustic frequency
- Equipped with the air-water button

Imaging Pioneer

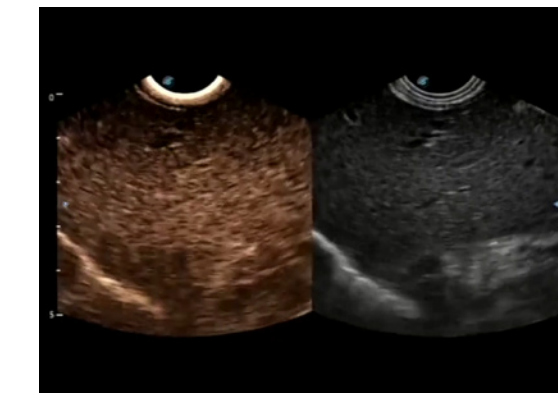
Get access to one of the finest ultrasound images worldwide, well-known amongst your radiology colleagues.

- All common modalities and Doppler technology.
- Contrast-Enhanced Harmonic EUS and EUS elastography
- Transducer of the latest generation with improved electromagnetic shielding technology

Attention to Detail

The EG-UC5T was designed to offer you maximum comfort in procedures and minimum concern of safety, in indispensable details.

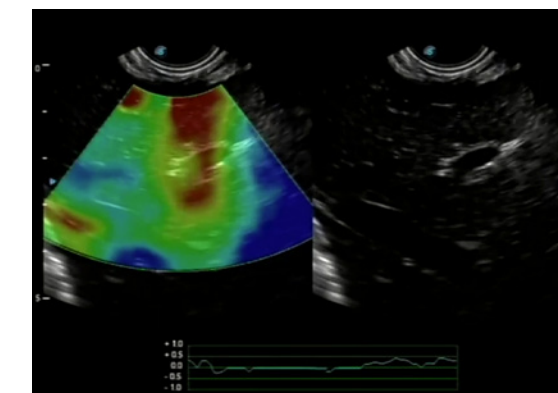
- Light-weight handle with four fully customisable buttons
- A unique cut-out design on the back of the elevator facilitates scope cleaning



Contrast-Enhanced Harmonic EUS



Paired with S60 Ultrasound scanner



EUS Elastography

The EG-UC5T is paired with:

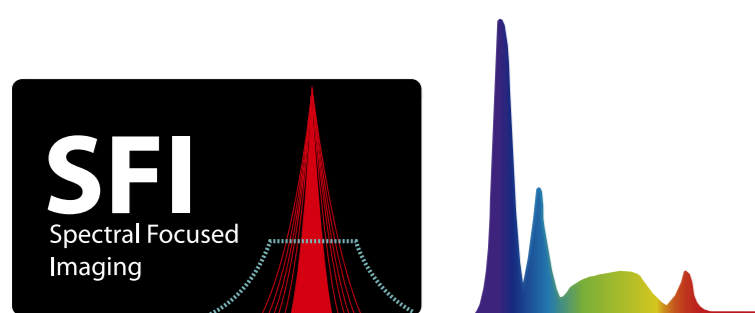


HD-550/HD-500
Endoscopy system



P60/S60
Ultrasound scanner

Get to Know SFI/VIST, SonoScape's multi-mode chromoendoscopy technology



SFI, Spectral Focused Imaging:

Through programmed spectrum processing, the spectral energy was converged around the capillary's peak absorption. SFI enhances the structure contrast of the tissue, increases the color contrast and facilitates the lesion detection.



VIST, Versatile Intelligent Staining Technology:

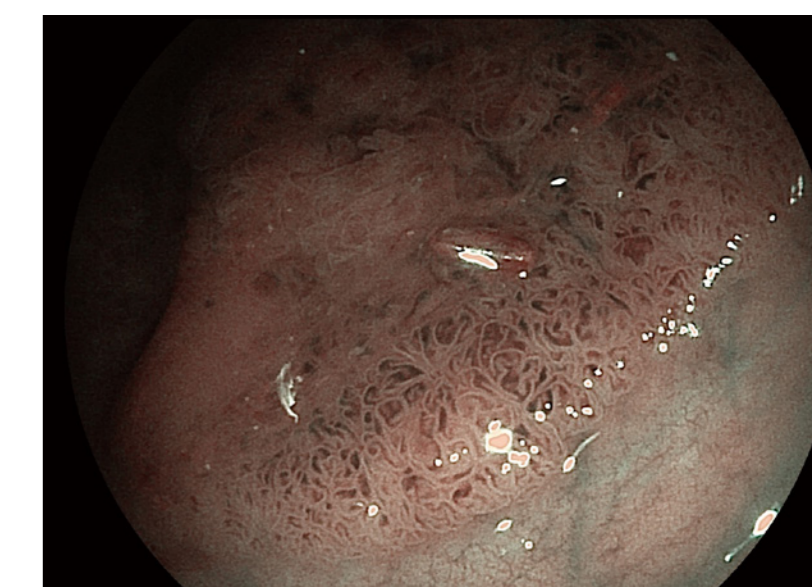
Chromoendoscopy technology that combines optical and digital image processing like SFI. It provides clear and bright images with high contrast, results in clear visualization of the mucosal and vascular pattern morphology.



WL mode



SFI mode



VIST mode

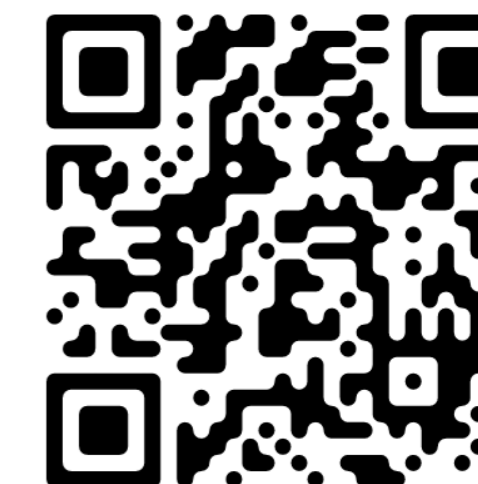
(Images courtesy of Prof H. Neumann, Germany).

Clinical Case: Flat lesion in the rectum

A 71-year-old male patient underwent a screening colonoscopy. A large, Paris IIa lesion was seen in the rectum.

Observation under White Light, SFI and VIST. SFI detects and shows clearly the border of the adenoma.

Histopathology result shows tubulovillous adenoma with HGIN.



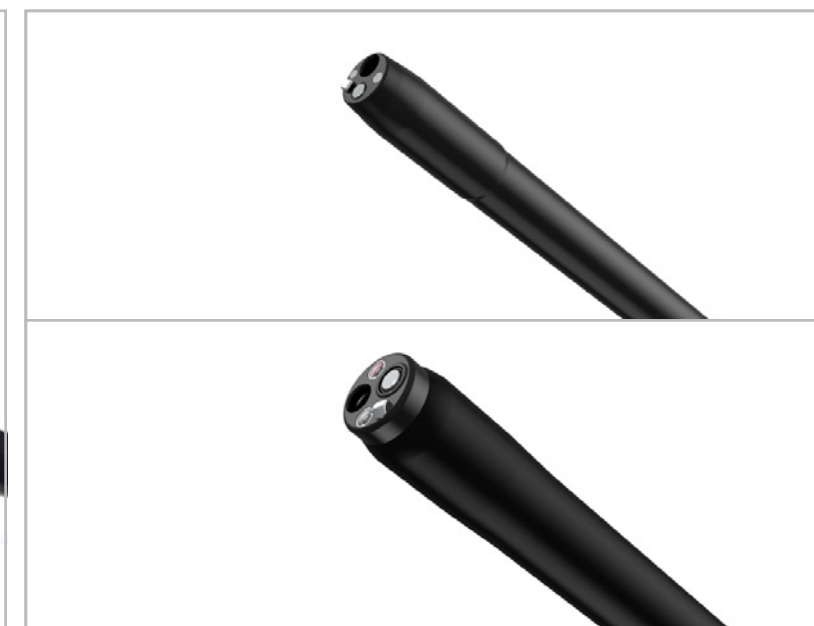
Scan the QR code for the latest clinical cases

CONTINUOUSLY
**LEAPING
FORWARD**

Fast developing, SonoScape is reinvesting about 18% of its revenue into R&D each year. Today, our wide product offering covers the spectrum of modern endoscopy¹, bringing increasing diagnostic and therapeutic possibilities. Innovation is in our DNA. Striving to provide best-in-class patient care is our motto. Join us in our journey to a brilliant future of endoscopy.



ED-5GT
Duoendoscope
with removable distal cap



EG-P550N/EC-P550S
Slim gastroscopes/colonoscopes



¹ Including gastroscopes, colonoscopes, duodenoscopes, radial and linear echoendoscopes. Some of the products may still be under registration process. We invite you to check with your local sales representative for latest updates.