

EIP 2

Clear view of the target tissue - with the Erbe EIP 2 irrigation pump



INDISPENSABLE
IN ENDOSCOPIC
AND OPEN
SURGICAL
INTERVENTION

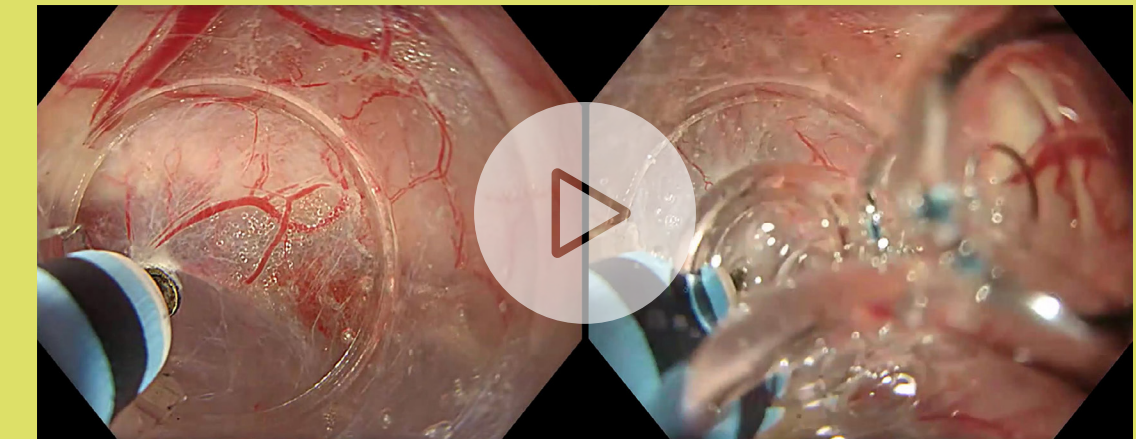
REDUCES
TISSUE
ADHESION BY
IRRIGATING AND
MOISTENING THE
APPLICATION
SITE

FACILITATES
DIAGNOSTIC AND
THERAPEUTIC
PROCEDURES

CLEANS THE
TARGET TISSUE
AND IMPROVES
VISIBILITY

Improved visibility for diagnosis and therapy in endoscopic procedures

- The EIP 2 irrigation pump flushes the application site clean of feces, food remnants and blood. This improves visibility onto the application site and allows targeted coagulation of potential sources of bleeding. EIP 2 can be activated for irrigation during diagnosis and therapy, making an additional irrigation catheter unnecessary. Furthermore, when the tissue to be treated with electro-surgical cutting and coagulation is moist, adhesion is reduced.



Automatic irrigation with the EIP 2 to retain a clear view of the target tissue.

- During underwater interventions (e.g. uEMR, uESD) the use of EIP 2 shows additional benefits with regards to visibility. Controlled flushing in sync with the monopolar activation of a VIO® generator has been shown to assist in "expelling bubbles outside of the cap, so that submucosal dissection can be continued with a good view of the tissue." (Prof. Motohiko Kato)

Reduced adhesion during open-surgical interventions

- EIP 2 can be connected to Erbe's whole range of bipolar irrigation forceps.
- Flushing the application site with irrigation forceps during bipolar coagulation enhances the anti-sticking effect and reduces tissue adhesion.

Connected workstation

- EIP 2 can be activated either simultaneously or supplementary to other means of irrigation during diagnosis and therapy.
- When installed as part of a VIO® workstation, the EIP 2 can also be activated in sync with the electrosurgical unit. This allows for autonomous operation of EIP 2, eliminating the need for the user to manually activate the irrigation pump, e.g. when using irrigation forceps.
- Dedicated footswitch and user interface allow activation of standalone EIP 2 units.
- The current flow rate setting is shown on the display of the EIP 2.

High volume irrigation

- The EIP 2 can deliver up to 500 ml/min of liquid on the highest flow rate setting. The flow rate can be programmed in 1% increments to allow for a precise adjustment based on the clinical need.

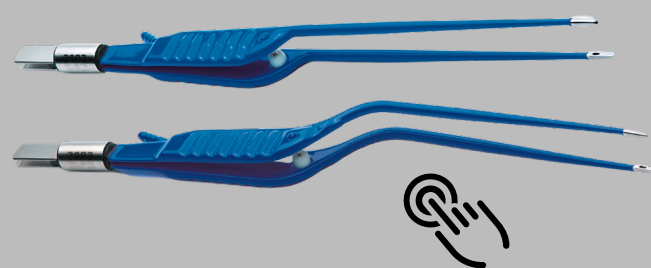
Customizable pre-sets

- Three quick activation buttons next to the display allow users to select between different flow rate levels; the settings they correspond to are customizable to ensure a proper fit to the use environment.

Compatible instruments

Here is a curated selection of compatible surgical instruments:

Bipolar irrigation forceps



Tubing sets

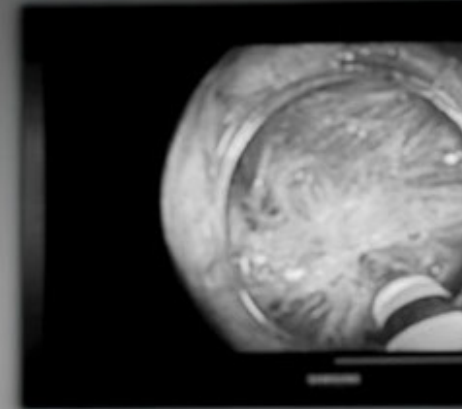


Technical data for EIP 2

EIP 2		No. 10325-000
Type of pump	Peristaltic roller pump	
Type of operation	Continuous	
Pump operation		
Activation	Via a connected VIO unit, a separate EIP 2 footswitch or the EIP 2 user interface	
Flow rate	Variable adjustment via the control panel of the EIP 2. 3 quick activation buttons (pre-set values of 30, 50 and 80%)	
Maximum flow rate with tubing set	500 ml/min corresponds to 100%	
Mains connection		
Line voltage	230 V +/- 10% 120 V +/- 10% 100 V +/- 10%	
Power frequency	50 Hz/ 60 Hz	
Classification		
Protection class	Classification according to EN IEC 60601-1: Class I, Type CF	
Medical product classification	Classification according to EU Directive 93/42/EEC: IIa Classification according to MDR 2017/745: IIa	
Accessories		
Fastening set EIP 2 / ESM 2 to VIO® Cart 20180-000	20180-135	
Fastening set EIP 2 on SystemCarrier performance	20180-513	
Tubing set EIP 2 for flexible endoscopes, with Luer-lock connection, length 2.5 m	20325-010	
Tubing set EIP 2 for irrigation forceps, without connecting cable, length 2.8 m	20325-011	
One-pedal footswitch for EIP 2, AP & IP X8 equipment with connecting cable 3 m, connecting plug 4 poles	20325-000	
Hook for irrigation liquid bag on bracket / VIO® Cart	20325-002	

erbe

VIO® 3n and EIP 2 –
Connecting performance across your
surgical workflow.



Gastroenterology workstation
VIO® 3n Fire, APC 3, ERBEJET® 2
and EIP 2 on SystemCarrier
performance

WHICH CONFIGURATION
FITS YOU BEST?

